

LOC I-GRK <b>111.1</b>	APP CRS <b>153°</b>	Rwy Idg TDZE Apt Elev	<b>9997</b> <b>1015</b> <b>1015</b>
---------------------------	------------------------	-----------------------------	---

# ILS or LOC RWY 15

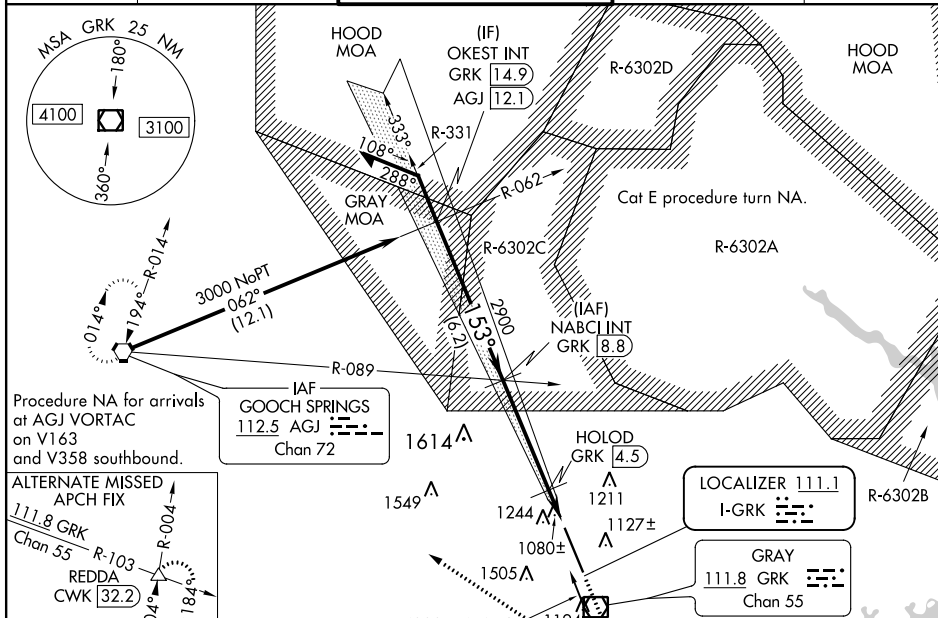
ROBERT GRAY AAF (GRK)

**⚠** Circling NA west of Rwy 15-33. For inop ALS, increase S-ILS 15 Cat E visibility to RVR 4000, S-LOC 15 Cats C/D/E visibility to 1 $\frac{1}{2}$  SM, and HOLOD FIX minimums S-LOC 15 Cats C/D/E visibility to RVR 5500. DME from GRK VOR/DME. Simultaneous reception of I-GRK and GRK VOR/DME required.  
#RVR 1800 authorized with use of FD or AP or HUD to DA.

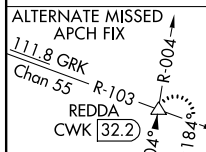


**MISSED APPROACH:** Climb to 2000 then climbing right turn to 3000 direct AGJ VORTAC and hold.

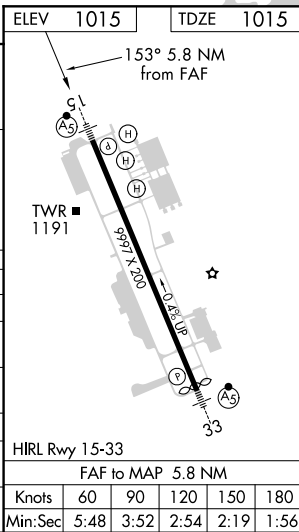
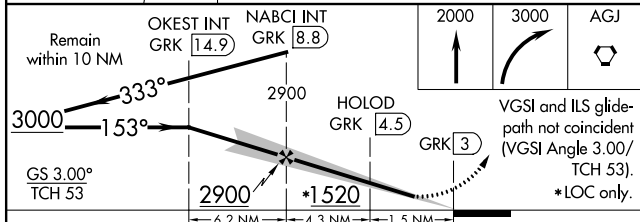
ATIS <b>124.9</b>	GRAY APP CON <b>120.075 323.15</b>	GRAY TOWER <b>120.75 285.5</b>	GND CON <b>121.8 279.5</b>	CLNC DEL <b>126.2 251.1</b>
----------------------	---------------------------------------	-----------------------------------	-------------------------------	--------------------------------



Procedure NA for arrivals at AGJ VORTAC on V163 and V358 southbound.



ELEV	1015	TDZE	1015
------	------	------	------



CATEGORY	A	B	C	D	E
S-ILS 15 #	1215/24		200 (200- $\frac{1}{2}$ )		
S-LOC 15	1520/24	505 (600- $\frac{1}{2}$ )	1520/55 505 (600-1)		
<b>C</b> CIRCLING	1540-1	525 (600-1)	1560-1 $\frac{1}{2}$ 545 (600-1 $\frac{1}{2}$ )	1620-2 605 (700-2)	1740-2 $\frac{1}{2}$ 725 (800-2 $\frac{1}{2}$ )
HOLOD FIX MINIMUMS (DME REQUIRED)					
S-LOC 15	1380/24	365 (400- $\frac{1}{2}$ )	1380/35 365 (400- $\frac{3}{4}$ )		
<b>C</b> CIRCLING	1540-1	525 (600-1)	1560-1 $\frac{1}{2}$ 545 (600-1 $\frac{1}{2}$ )	1620-2 605 (700-2)	1740-2 $\frac{1}{2}$ 725 (800-2 $\frac{1}{2}$ )

HIRL Rwy 15-33					
FAF to MAP 5.8 NM					
Knots	60	90	120	150	180
Min:Sec	5:48	3:52	2:54	2:19	1:56

SC-3, 16 JUN 2022 to 14 JUL 2022

SC-3, 16 JUN 2022 to 14 JUL 2022