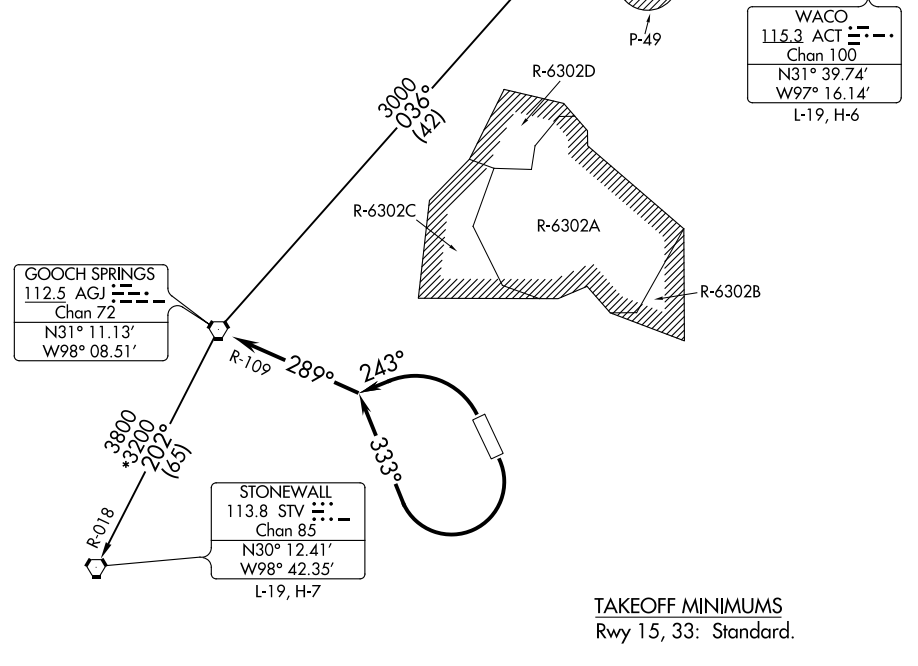


LAMPS SEVEN DEPARTURE

ATIS
124.9
CLNC DEL
126.2 251.1
GND CON
121.8 279.5
GRAY TOWER
120.75 285.5
GRAY DEP CON
120.075 323.15

**TOP ALTITUDE:
ASSIGNED BY ATC**



SC-3, 16 JUN 2022 to 14 JUL 2022

SC-3, 16 JUN 2022 to 14 JUL 2022

NOTE: RADAR required.

NOTE: WACO TRANSITION for aircraft inbound to terminal area airports.

NOTE: Chart not to scale.

DEPARTURE ROUTE DESCRIPTION

TAKEOFF RWY 15: Climbing right turn heading 333° (to assigned altitude) to intercept and proceed on AGJ R-109. Thence

TAKEOFF RWY 33: Climbing left turn heading 243° (to assigned altitude) to intercept and proceed on AGJ R-109. Thence

. . . . on (transition) or (assigned route).

STONEWALL TRANSITION (LAMPS7.STV): From over AGJ VORTAC on AGJ R-202 and STV R-018 to STV VORTAC.

WACO TRANSITION (LAMPS7.ACT): From over AGJ VORTAC on AGJ R-036 to SONET INT, then on ACT R-271 to ACT VORTAC.

LAMPS SEVEN DEPARTURE

(LAMPS7.AGJ) 10OCT19