

VOR/DME GRK 111.8 Chan 55	APP CRS 152°	Rwy Idg 9997 TDZE 1015 Apt Elev 1015
--	------------------------	---

VOR/DME RWY 15

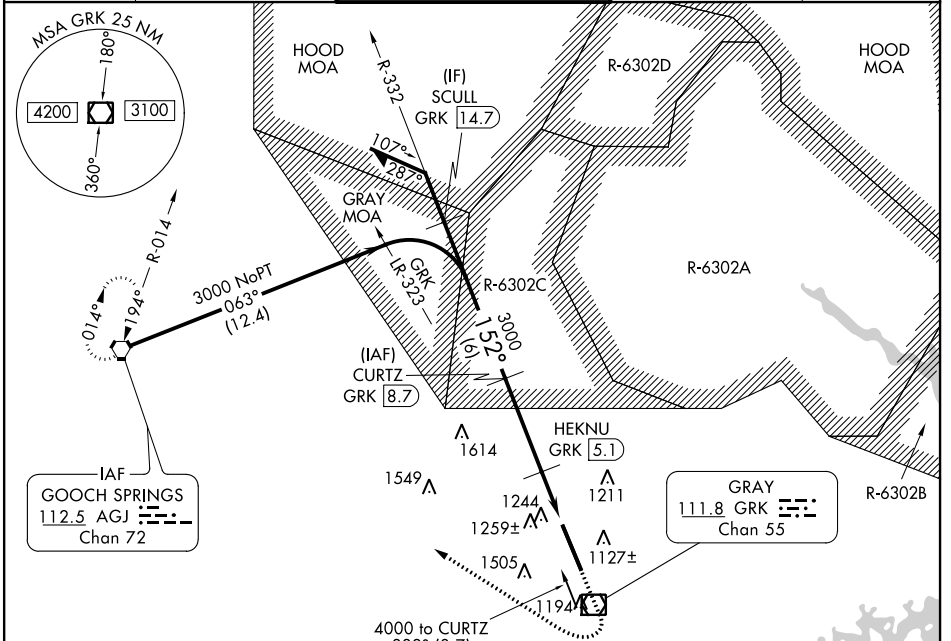
ROBERT GRAY AAF (GRK)

NA Circling NA W of Rwy 15-33. For inoperative MALSR, increase S-15 Cat E visibility 1/2 mile.

MALSR

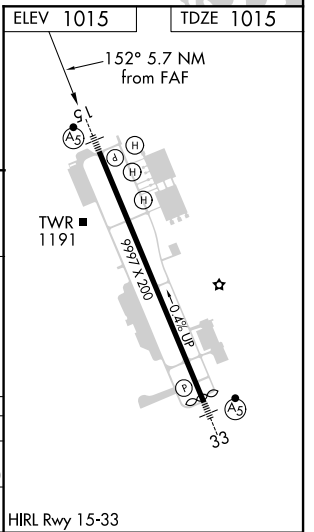
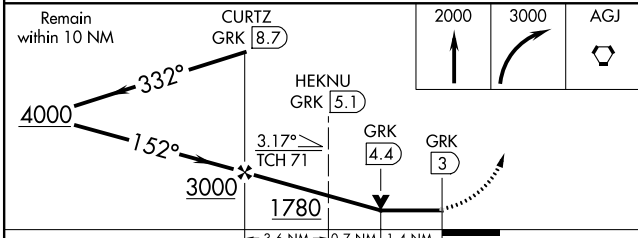
MISSED APPROACH: Climb to 2000 then climbing right turn to 3000 direct AGJ VORTAC and hold.

ATIS 124.9	GRAY APP CON 120.075 323.15	GRAY TOWER 120.75 285.5	GND CON 121.8 279.5	CLNC DEL 126.2 251.1
----------------------	---------------------------------------	-----------------------------------	-------------------------------	--------------------------------



A1616±

Cat E procedure turn not authorized.



CATEGORY	A	B	C	D	E
S-15	1520/24	505 (600-1/2)	1520/50	505 (600-1)	1520/60 505 (600-1/4)
CIRCLING	1540-1	525 (600-1)	1560-1 1/2 545 (600-1 1/2)	1620-2 605 (700-2)	1740-2 1/2 725 (800-2 1/2)

HIRL Rwy 15-33

SC-3, 16 JUN 2022 to 14 JUL 2022

SC-3, 16 JUN 2022 to 14 JUL 2022