

VORTAC HBR 111.8 Chan 55	APP CRS 354°	Rwy Idg TDZE Apt Elev	5507 1561 1563
---------------------------------------	------------------------	-----------------------------	---

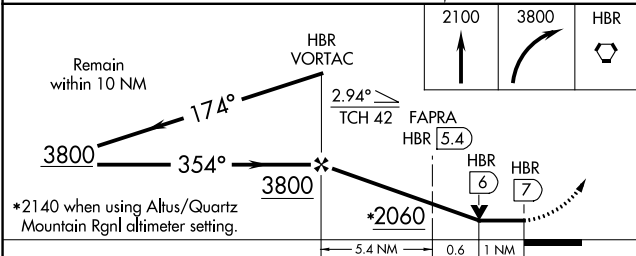
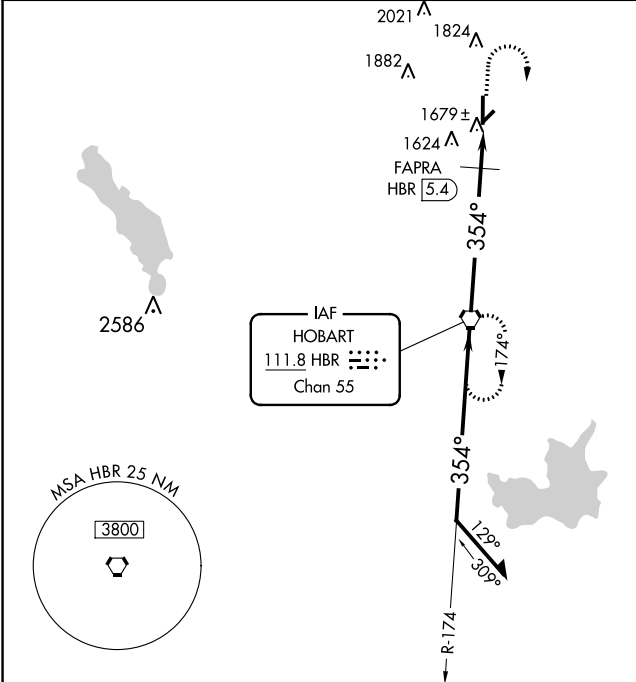
VOR RWY 35

HOBART RGNL (HBR)

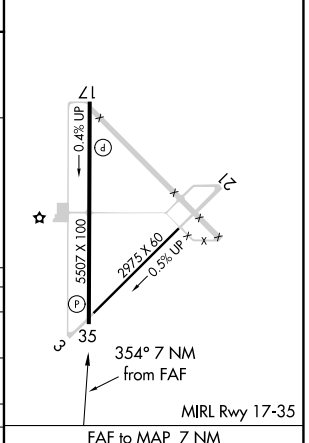
⚠ When local altimeter setting not received, use Altus/Quartz Mountain Rgnl altimeter setting and increase all MDAs 80 feet, increase S-35 Cats C/D and Circling Cat C visibility ¼ SM, increase FAPRA fix minimums S-35 Cats C/D and Circling Cat C visibility ¼ SM. VDP NA when using Altus/Quartz Mountain Rgnl altimeter setting.

MISSED APPROACH: Climb to 2100, then climbing right turn to 3800 direct HBR VORTAC and hold.

ASOS 133.325	ALTUS APP CON ★ 125.1 353.7	UNICOM 122.8 (CTAF)
------------------------	---------------------------------------	-------------------------------



ELEV 1563	TDZE 1561
-----------	-----------



CATEGORY	A	B	C	D
S-35	2060-1	499 (500-1)	2060-1¼ 499 (500-1¼)	2060-1½ 499 (500-1½)
CIRCLING	2060-1	497 (500-1)	2320-2¼ 757 (800-2¼)	2460-3 897 (900-3)
FAPRA FIX MINIMUMS				
S-35	1980-1	419 (500-1)	1980-1¼	419 (500-1¼)
CIRCLING	1980-1 417 (500-1)	2020-1 457 (500-1)	2320-2¼ 757 (800-2¼)	2460-3 897 (900-3)

FAF to MAP 7 NM					
Knots	60	90	120	150	180
Min:Sec	7:00	4:40	3:30	2:48	2:20

SC-1, 16 JUN 2022 to 14 JUL 2022

SC-1, 16 JUN 2022 to 14 JUL 2022