


WAAS CH 65621 W04A	APP CRS 045°	Rwy Idg 5130 TDZE 51 Apt Elev 53
--	------------------------	---

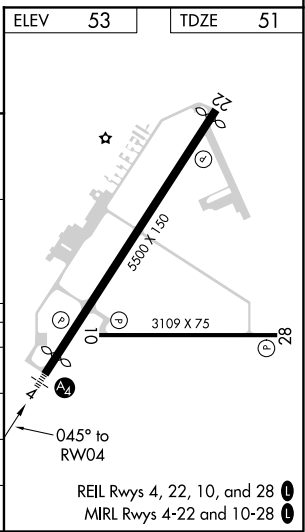
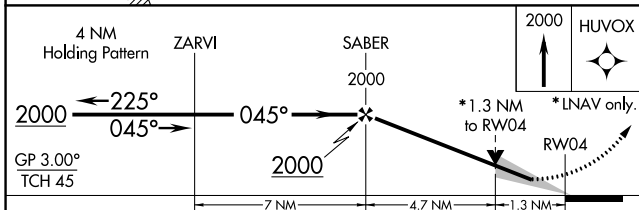
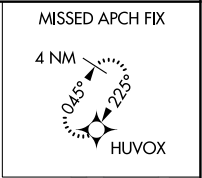
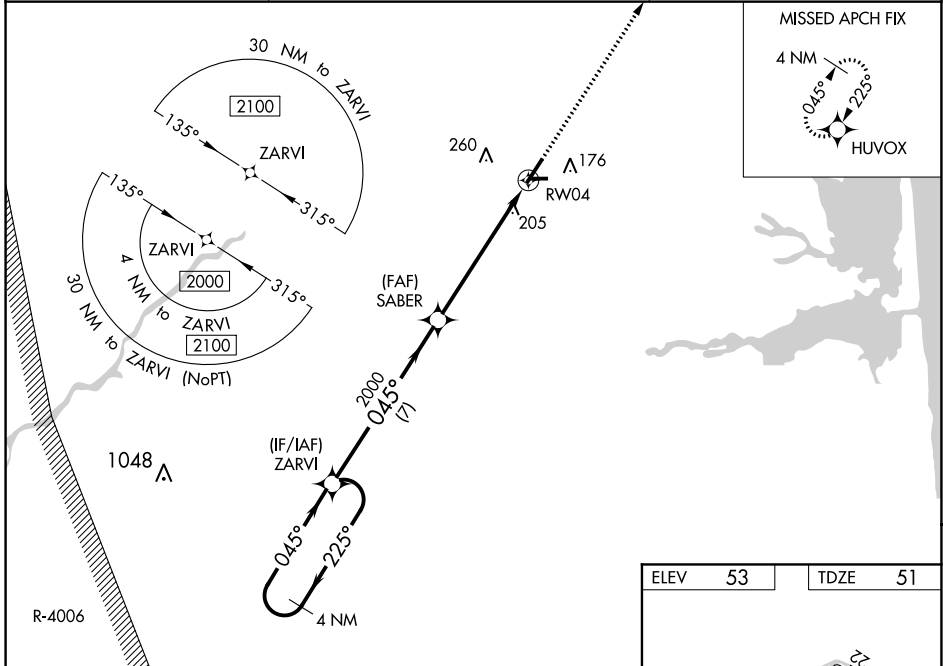
RNAV (GPS) RWY 4

DELAWARE COASTAL (GED)

⚠ DME/DME RNP-0.3 NA. When local altimeter setting not received, use Salisbury altimeter setting and increase LPV DA to 353 feet, LNAV/VNAV DA to 555 feet, increase all MDA 60 feet.
⚠ Increase LNAV/VNAV all Cats visibility to 1 1/2 mile, LNAV Cats C/D visibility to 1 1/4 mile and increase Circling Cat C visibility to 2 miles and Cat D visibility to 2 1/4 miles. For uncompensated Baro-VNAV systems, LNAV/VNAV NA below -13°C (9°F) or above 54°C (130°F).
 Baro-VNAV and VDP NA when using Salisbury altimeter setting. For inoperative MALS increase LNAV/VNAV all Cats and LNAV Cats C/D visibility 1/4 mile. For inoperative MALS when using Salisbury altimeter increase LPV visibility all Cats, LNAV/VNAV and LNAV Cat D 1/4 mile. Night Landing: Rwy 10, 28 NA.

MALS  MISSED APPROACH: Climb to 2000 direct HUVOX and hold.

ASOS 118.375	DOVER APP CON 132.425 257.875	UNICOM 123.0 (CTAF) 0
------------------------	---	---------------------------------



CATEGORY	A	B	C	D
LPV DA		301-3/4	250 (300-3/4)	
LNAV/VNAV DA		503-1 1/4	452 (500-1 1/4)	
LNAV MDA	520-3/4	469 (500-3/4)	520-1 1/8	469 (500-1 1/8)
CIRCLING	560-1	580-1	720-1 3/4	720-2
	507 (600-1)	527 (600-1)	667 (700-1 3/4)	667 (700-2)

NE-3, 16 JUN 2022 to 14 JUL 2022

NE-3, 16 JUN 2022 to 14 JUL 2022