

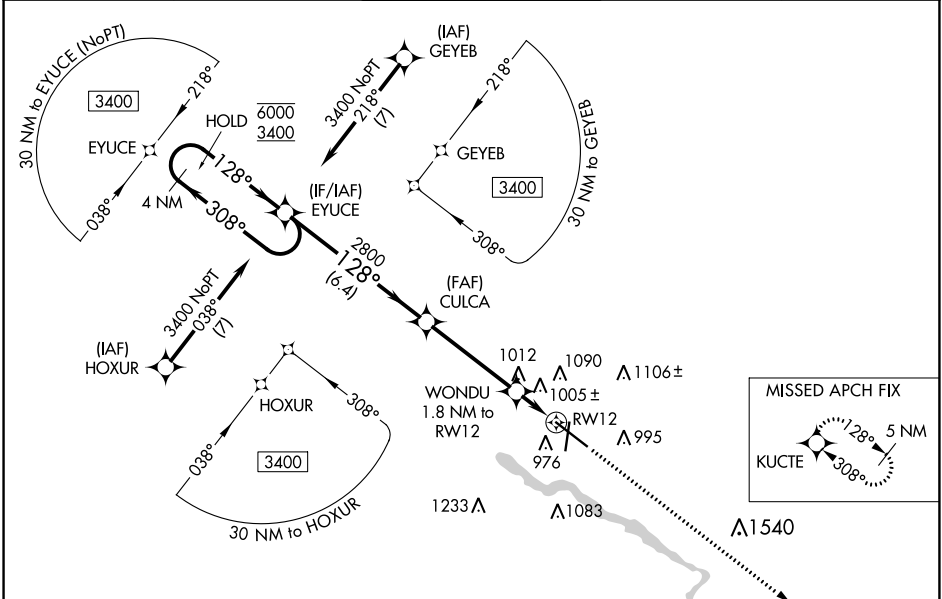
WAAS CH 72801 W12A	APP CRS 128°	Rwy Idg TDZE Apt Elev	8399 873 873
--	------------------------	-----------------------------	---

RNAV (GPS) RWY 12

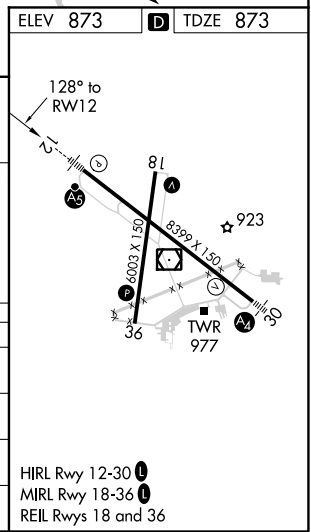
WATERLOO RGNL (A.L.O)

RNP APCH.	<p>For uncompensated Baro-VNAV systems, LNAV/VNAV NA below -19°C or above 54°C. For inop ALS, increase LNAV/VNAV all Cats to RVR 5500. # RVR 1800 authorized with use of FD or AP or HUD to DA.</p>	MALSR	<p>MISSED APPROACH: Climb to 3400 direct KUCTE and hold.</p>
<p>▽ ▲</p>			

ATIS 120.65	WATERLOO APP CON* 118.9 251.15	WATERLOO TOWER* 125.075 (CTAF) 257.8	GND CON 121.9 269.1	UNICOM 122.95
-----------------------	--	--	-------------------------------	-------------------------



<p>4 NM Holding Pattern</p> <p>EYUCE</p> <p>6000 ← 308°</p> <p>3400 → 128°</p> <p>GP 3.00°</p> <p>TCH 55</p>		<p>CULCA</p> <p>2800</p> <p>WONDU 1.8 NM to RW12</p> <p>*1500</p> <p>*1 NAV only</p>		<p>3400 KUCTE</p> <p>128° to RW12</p>	
<p>6.4 NM</p>		<p>4.1 NM</p>		<p>0.8 NM</p>	
<p>1 NM</p>					
CATEGORY	A	B	C	D	
LPV DA#	1073/24		200 (200-½)		
LNAV/VNAV DA	1252/30		379 (400-5%)		
LNAV MDA	1260/24 387 (400-½)		1260/35 387 (400-5%)		
CIRCLING	1360-1 487 (500-1)	1400-1 527 (600-1)	1480-1¾ 607 (700-1¾)	1600-2¼ 727 (800-2¼)	



NC-3, 16 JUN 2022 to 14 JUL 2022

NC-3, 16 JUN 2022 to 14 JUL 2022