

WAAS CH 48942 W36A	APP CRS 008°	Rwy Idg TDZE Apt Elev	6003 869 873
--	------------------------	-----------------------------	---

RNAV (GPS) RWY 36

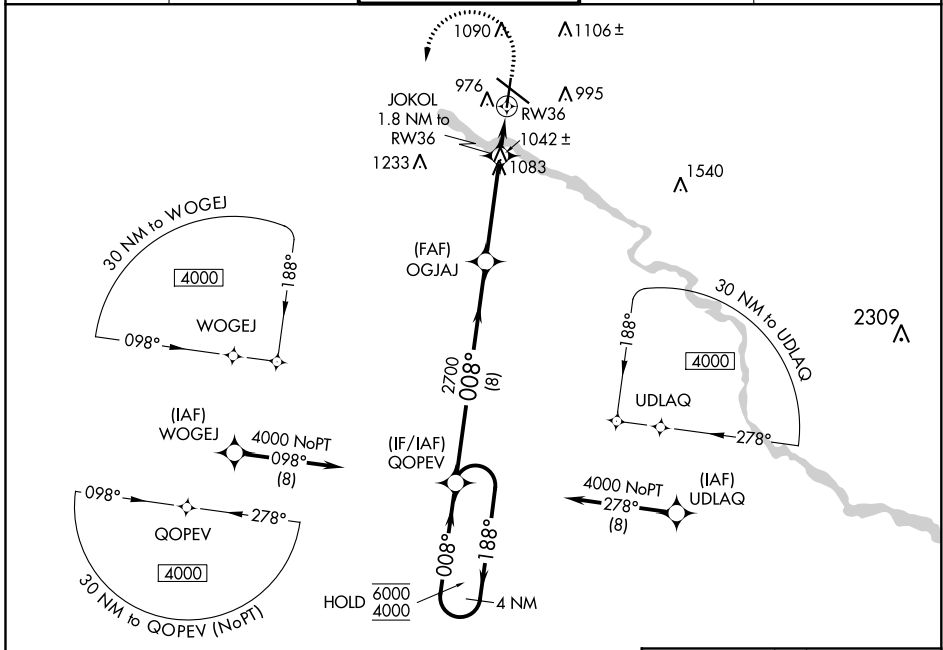
WATERLOO RGNL (A.I.O)

RNP APCH-GPS.

▼ For uncompensated Baro-VNAV systems, LNAV/VNAV NA below -20°C or above 54°C.

▲ MISSED APPROACH: Climb to 2000 then climbing left turn to 4000 direct QOPEV and hold.

ATIS 120.65	WATERLOO APP CON * 118.9 251.15	WATERLOO TOWER * 125.075 (CTAF) 0 257.8	GND CON 121.9 269.1	UNICOM 122.95
-----------------------	---	---	-------------------------------	-------------------------



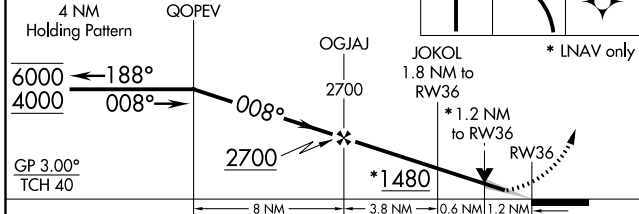
NC-3, 16 JUN 2022 to 14 JUL 2022

NC-3, 16 JUN 2022 to 14 JUL 2022

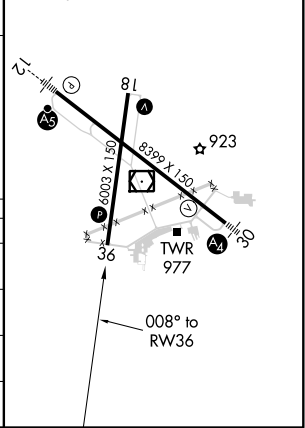
ELEV 873	D TDZE 869
----------	-------------------

VGSI and RNAV glidepath not coincident. (VGSI Angle 3.00/TCH 40).

2000 4000 QOPEV



HIRL Rwy 12-30
MIRL Rwy 18-36
REIL Rws 18 and 36



CATEGORY	A	B	C	D
LPV DA	1069-3/4		200 (200-3/4)	
LNAV/VNAV DA	1190-1		321 (400-1)	
LNAV MDA	1300-1	431 (500-1)	1300-1 1/4	431 (500-1 1/4)
C CIRCLING	1360-1 487 (500-1)	1400-1 527 (600-1)	1480-1 3/4 607 (700-1 3/4)	1600-2 1/4 727 (800-2 1/4)