

VOR/DME ALO	APP CRS	Rwy Idg	6003
112.2	176°	TDZE	871
Chan 59		Apt Elev	873

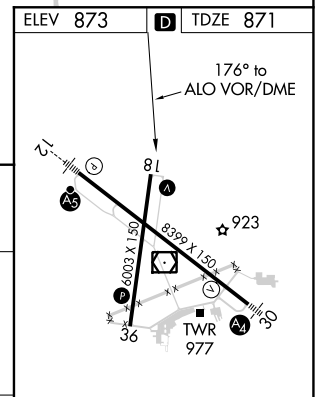
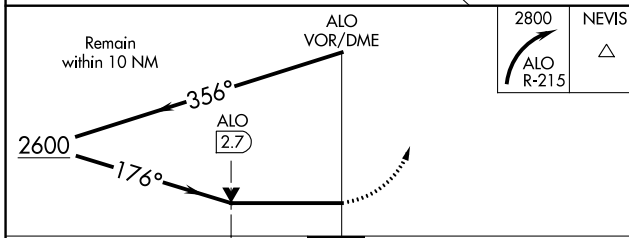
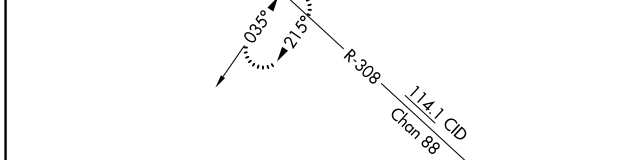
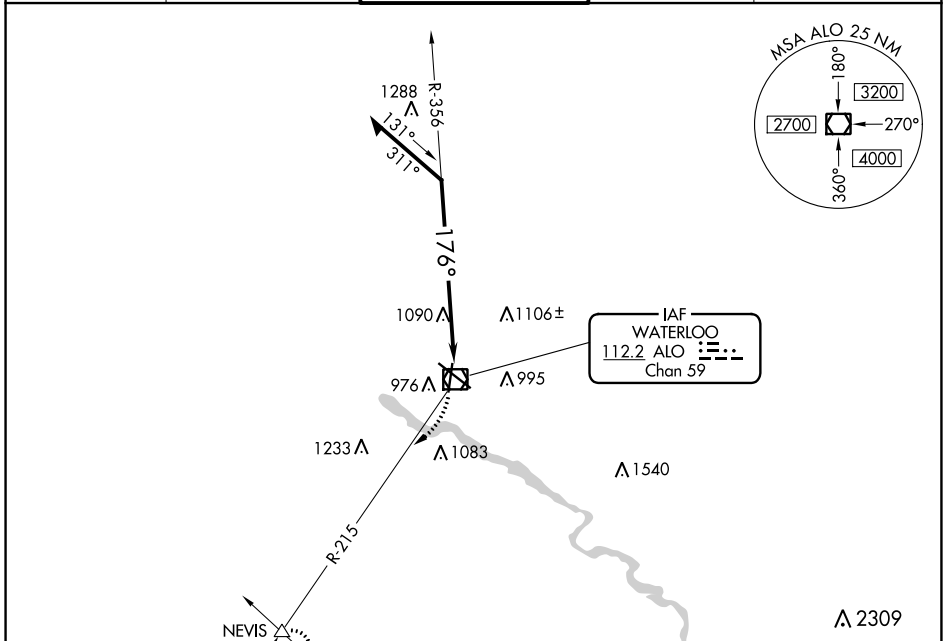
VOR RWY 18

WATERLOO RGNL (A.LO)

⚠ Rwy 18 helicopter visibility reduction below $\frac{3}{4}$ SM NA.

⚠ MISSED APPROACH: Climbing right turn to 2800 on ALO VOR/DME R-215 to NEVIS INT and hold.

ATIS 120.65	WATERLOO APP CON * 118.9 251.15	WATERLOO TOWER * 125.075 (CTAF) 257.8	GND CON 121.9 269.1	UNICOM 122.95
-----------------------	---	---	-------------------------------	-------------------------



CATEGORY	A	B	C	D
S-18	1600-1 729 (800-1)		1600-2 729 (800-2)	
C CIRCLING	1600-1 727 (800-1)		1600-2 727 (800-2)	1600-2 1/4 727 (800-2 1/4)

HIRL Rwy 12-30 **Ⓛ**
 MIRL Rwy 18-36 **Ⓛ**
 REIL Rwy 18 and 36

NC-3, 16 JUN 2022 to 14 JUL 2022

NC-3, 16 JUN 2022 to 14 JUL 2022