

WAAS CH 86320 W22A	APP CRS 222°	Rwy Idg TDZE Apt Elev	5004 334 338
--	------------------------	-----------------------------	---

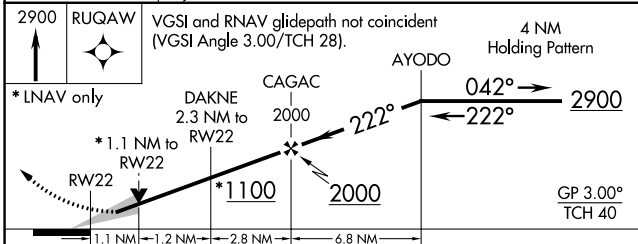
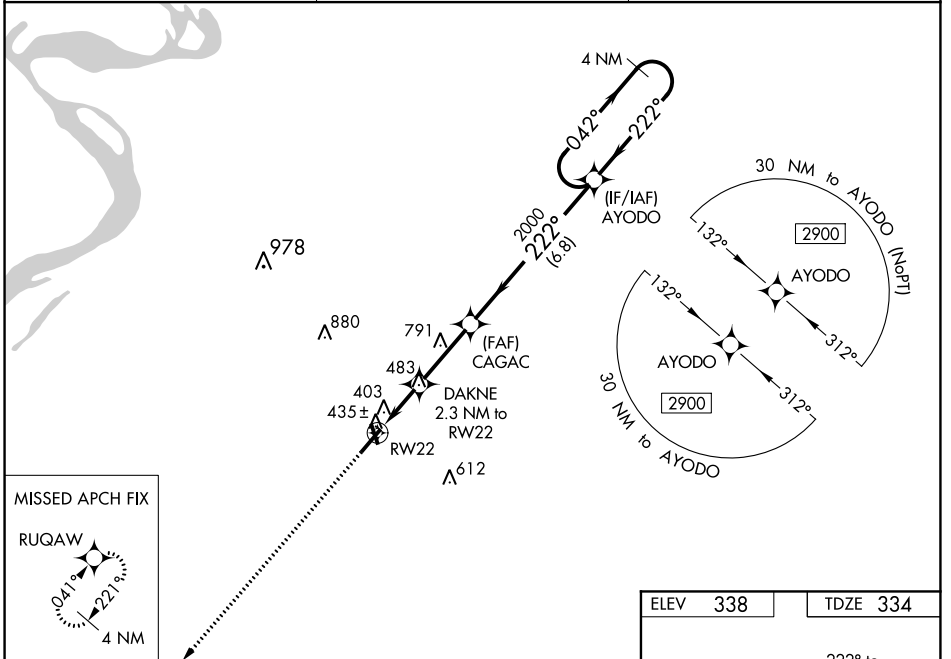
RNAV (GPS) RWY 22

DYERSBURG RGNL (DYR)

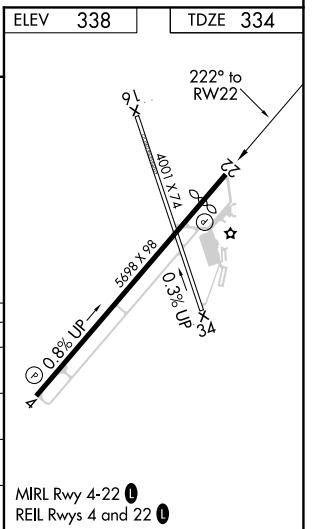
⚠ For uncompensated Baro-VNAV systems, LNAV/VNAV NA below -1.5°C (5°F) or above 54°C (130°F).
⚠ Baro-VNAV and VDP NA when using Blytheville Muni altimeter setting. DME/DME RNP-0.3 NA.
 When local altimeter setting not received, use Blytheville Muni altimeter setting: increase LPV DA to 644 feet, and LNAV/VNAV DA to 676 feet and all MDA 60 feet; increase LPV visibility all Cats 1/8 SM, and LNAV/VNAV visibility all Cats, LNAV Cats C/D visibility and Circling Cat C visibility 1/4 SM.
 Night landing: Rwy 16, 34 NA.

MISSED APPROACH:
 Climb to 2900 direct RUGAW and hold.

AWOS-3PT 135.625	MEMPHIS CENTER 134.65 316.15	UNICOM 123.05 (CTAF) 0
----------------------------	--	----------------------------------



CATEGORY	A	B	C	D
LPV DA		584-7/8	250 (300-7/8)	
LNAV/VNAV DA		616-7/8	282 (300-7/8)	
LNAV MDA		700-1	366 (400-1)	
CIRCLING	740-1 402 (500-1)	800-1 462 (500-1)	1040-2 702 (800-2)	1240-3 902 (1000-3)



SE-1, 16 JUN 2022 to 14 JUL 2022

SE-1, 16 JUN 2022 to 14 JUL 2022