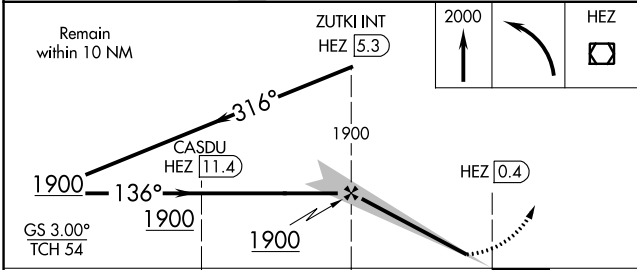
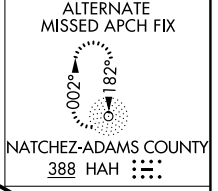
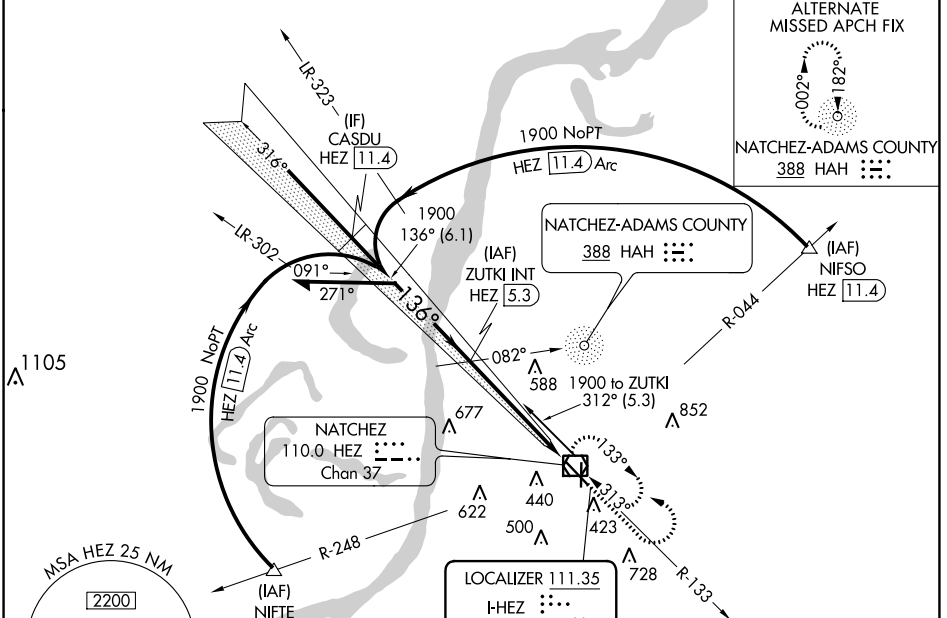


LOC I-HEZ 111.35	APP CRS 136°	Rwy ldg TDZE Apt Elev	6500 266 272
----------------------------	------------------------	-----------------------------	---

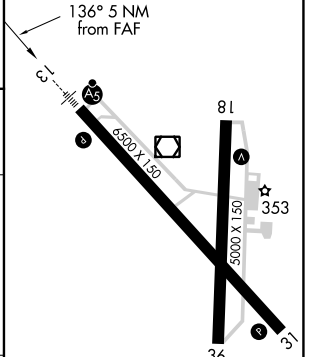
ILS or LOC RWY 13
HARDY-ANDERS FLD/NATCHEZ-ADAMS COUNTY (HE/Z)

ADF or DME required for procedure entry.	MALSR 	MISSED APPROACH: Climb to 2000 then left turn direct HEZ VOR/DME and hold.
Circling to Rwy 36 NA at night. For inop ALS, increase S-LOC 13 Cat C and D visibility to 1 3/8 SM.		

AWOS-3PT 124.675	HOUSTON CENTER 120.975 299.6	UNICOM 122.8 (CTAF)
----------------------------	--	-------------------------------



ELEV 272	TDZE 266
----------	----------



CATEGORY	A	B	C	D
S-ILS 13		466-1/2	200 (200-1/2)	
S-LOC 13	760-1/2	494 (500-1/2)	760-1	494 (500-1)
CIRCLING	760-1 488 (500-1)	800-1 528 (600-1)	1020-2 1/4 748 (800-2 1/4)	1220-3 948 (1000-3)

HIRL Rwy 13-31	MIRL Rwy 18-36				
FAF to MAP 5 NM					
Knots	60	90	120	150	180
Min:Sec	5:00	3:20	2:30	2:00	1:40

SC-4, 16 JUN 2022 to 14 JUL 2022

SC-4, 16 JUN 2022 to 14 JUL 2022