

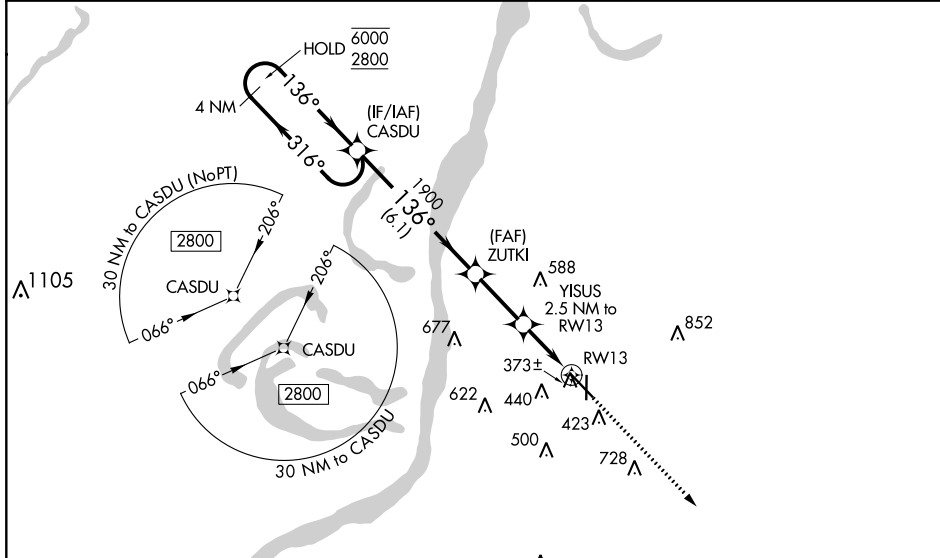
WAAS CH 50505 W13A	APP CRS 136°	Rwy ldg 6500 TDZE 266 Apt Elev 272
--	------------------------	---

RNAV (GPS) RWY 13

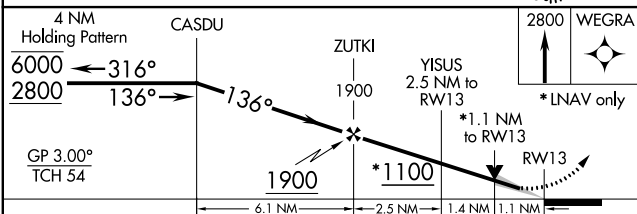
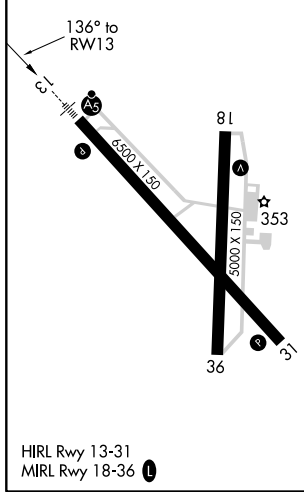
HARDY-ANDERS FLD/NATCHEZ-ADAMS COUNTY (HE/Z)

<p>RNP APCH.</p> <p>▼ Circling to Rwy 36 NA at night. For uncompensated Baro-VNAV systems, LNAV/VNAV NA below -15° C or above 54° C. For inop ALS, increase LNAV/VNAV all Cats visibility to 7/8 SM and LNAV Cat C and D visibility to 1 1/8 SM.</p>		<p>MALSR</p>	<p>MISSED APPROACH: Climb to 2800 direct WEGRA and hold.</p>
---	--	--------------	--

AWOS-3PT 124.675	HOUSTON CENTER 120.975 299.6	UNICOM 122.8 (CTAF)
----------------------------	--	-------------------------------



ELEV 272	TDZE 266
----------	----------



		A	B	C	D
LPV	DA	466-1/2		200 (200-1/2)	
LNAV/VNAV	DA	534-1/2		268 (300-1/2)	
LNAV MDA		680-1/2 414 (500-1/2)		680-3/4 414 (500-3/4)	
CIRCLING	740-1	800-1	1020-2 1/4	1220-3	
	468 (500-1)	528 (600-1)	748 (800-2 1/4)	948 (1000-3)	

SC-4, 16 JUN 2022 to 14 JUL 2022

SC-4, 16 JUN 2022 to 14 JUL 2022