

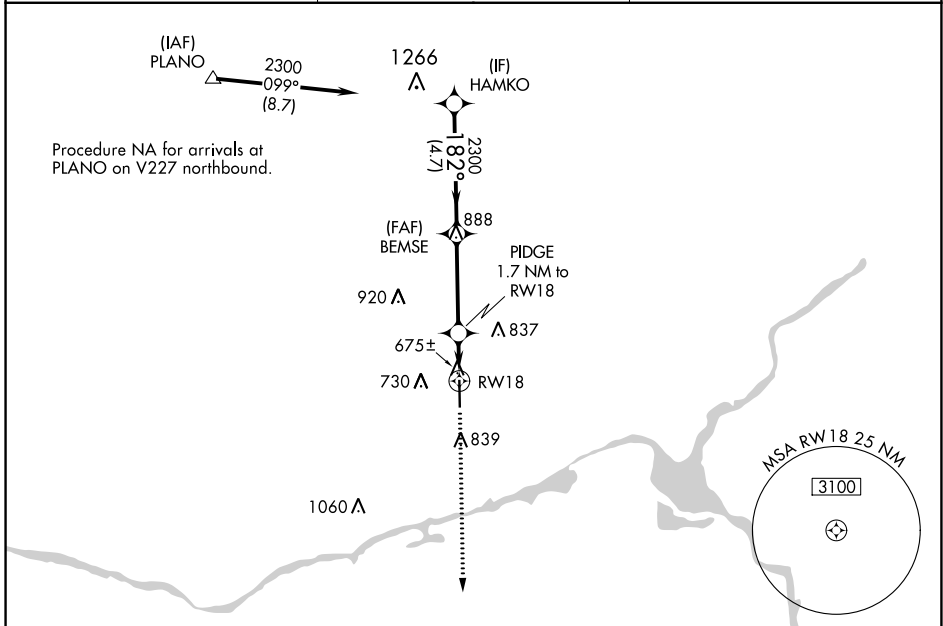
APP CRS	Rwy Idg	<b>5501</b>
<b>182°</b>	TDZE	<b>585</b>
	Apt Elev	<b>585</b>

# RNAV (GPS) RWY 18

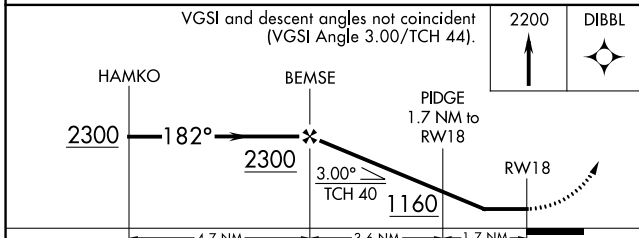
MORRIS MUNI-JAMES R WASHBURN FLD (C09)

RNP APCH.	Rwy 18 helicopter visibility reduction below 1 SM NA. When local altimeter setting not received, use Joliet altimeter setting and increase all MDA 40 feet, and increase LNAV Cat C visibility 1/8 mile. Straight-in, Circling Rwy 18 NA at night.	MISSED APPROACH: Climb to 2200 direct DIBBL and hold.
-----------	--	---

AWOS-3 <b>118.175</b>	CHICAGO APP CON <b>119.35 354.075</b>	UNICOM <b>122.8 (CTAF) 0</b>
--------------------------	--	---------------------------------



ELEV 585	TDZE 585



CATEGORY	A	B	C	D
LNAV MDA	940-1	355 (400-1)		NA
<b>C</b> CIRCLING	980-1 395 (400-1)	1140-1 555 (600-1)	1140-1½ 555 (600-1½)	NA

MIRL Rwy 18-36 0

REIL Rwys 18 and 36 0

EC-3, 16 JUN 2022 to 14 JUL 2022

EC-3, 16 JUN 2022 to 14 JUL 2022