

WAAS CH 77617 W09A	APP CRS 090°	Rwy Idg TDZE Apt Elev	5999 96 112
--	------------------------	-----------------------------	--

RNAV (GPS) RWY 9

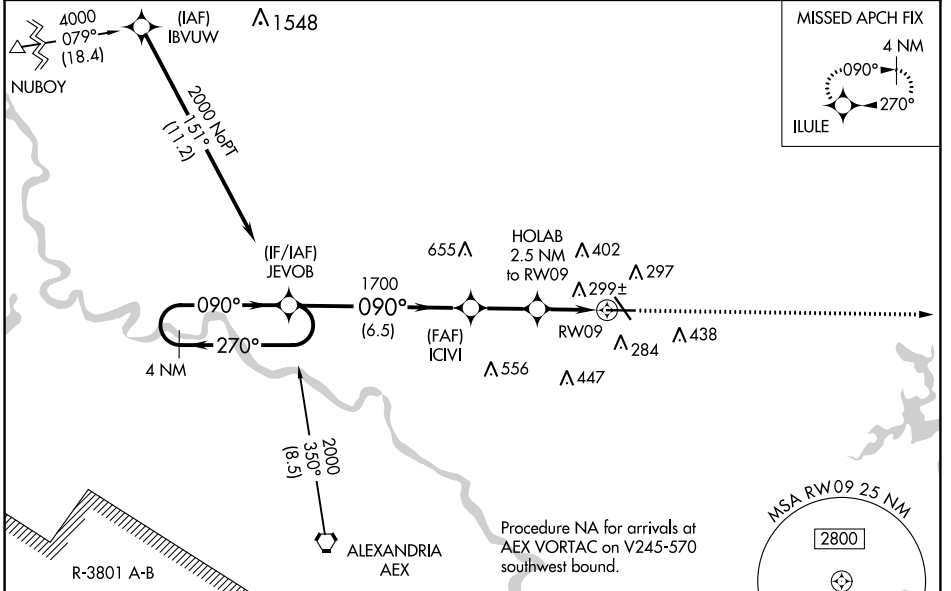
ESLER RGNL (E/SF)

RNP APCH-GPS.

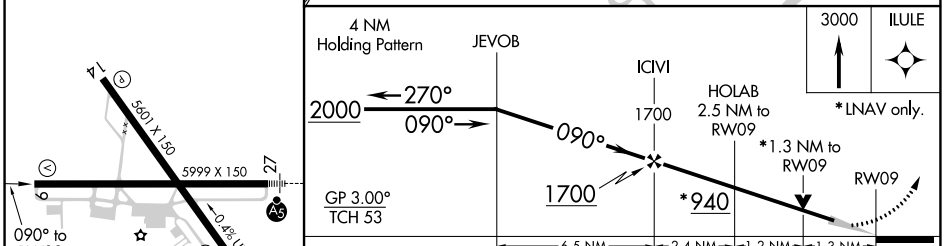
⚠ Circling Rwy 14, 32 NA at night. Baro-VNAV and VDP NA when using Alexandria Intl altimeter setting. For uncompensated Baro-VNAV systems, LNAV/VNAV NA below -6°C or above 54°C. When local altimeter setting not received, use Alexandria Intl altimeter setting; increase LPV DA to 331 feet; increase LNAV/VNAV DA to 644 feet and all visibility ¼ SM; increase all MDAs 40 feet and Circling visibility Cat D ¼.

MISSED APPROACH: Climb to 3000 direct ILULU and hold.

ESF ASOS 119.425	POLK APP CON 125.4 254.8	UNICOM 122.8 (CTAF) 0
----------------------------	------------------------------------	--



ELEV 112	D	TDZE 96
----------	----------	---------



CATEGORY	A	B	C	D
LPV DA		296-3/4	200 (200-3/4)	
LNAV/VNAV DA		609-13/8	513 (500-13/8)	
LNAV MDA	560-1	464 (500-1)	560-13/8	464 (500-13/8)
CIRCLING	600-1	488 (500-1)	740-13/4 628 (700-13/4)	760-2 648 (700-2)

REIL Rws 9, 14 and 32 **Ⓛ**
MIRL Rwy 14-32 **Ⓛ**
HIRL Rwy 9-27 **Ⓛ**

SC-4, 16 JUN 2022 to 14 JUL 2022

SC-4, 16 JUN 2022 to 14 JUL 2022