

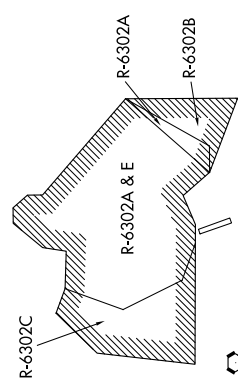
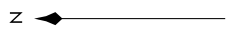
CONRA TWO DEPARTURE

SC-3, 16 JUN 2022 to 14 JUL 2022

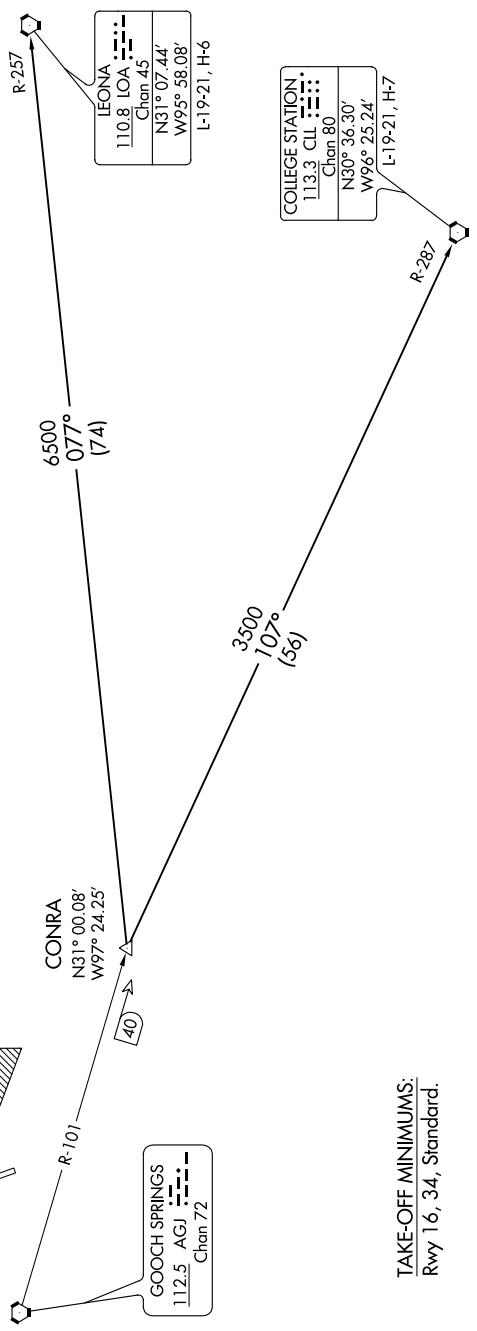
**TOP ALTITUDE:
12000**

CINC DEL
225.4
GND CON
133.85 225.4
HOOD TOWER ★
119.65 269.45
GRAY DEP CON
120.075 323.15

DEPARTURE ROUTE DESCRIPTION
Climb on assigned heading for RADAR vectors to CONRA INT, maintain 3500. Thence
. (transition). Expect filed altitude 10 minutes after departure.
COLLEGE STATION TRANSITION (CONRA2.CLL): From over CONRA INT via CLL R-287 to CLL VORTAC.
LEONA TRANSITION (CONRA2.LOA): From over CONRA INT via LOA R-257 to LOA VORTAC.



NOTE: RADAR required.



LEONA
110.8 LOA
Chan 45
N31° 07.44'
W95° 58.08'
L-19-21, H-6

GOOCH SPRINGS
112.5 AGJ
Chan 72

TAKE-OFF MINIMUMS:
Rwy 16, 34, Standard.

NOTE: Chart not to scale.

CONRA TWO DEPARTURE

SC-3, 16 JUN 2022 to 14 JUL 2022