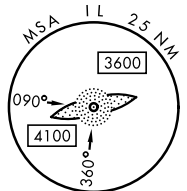
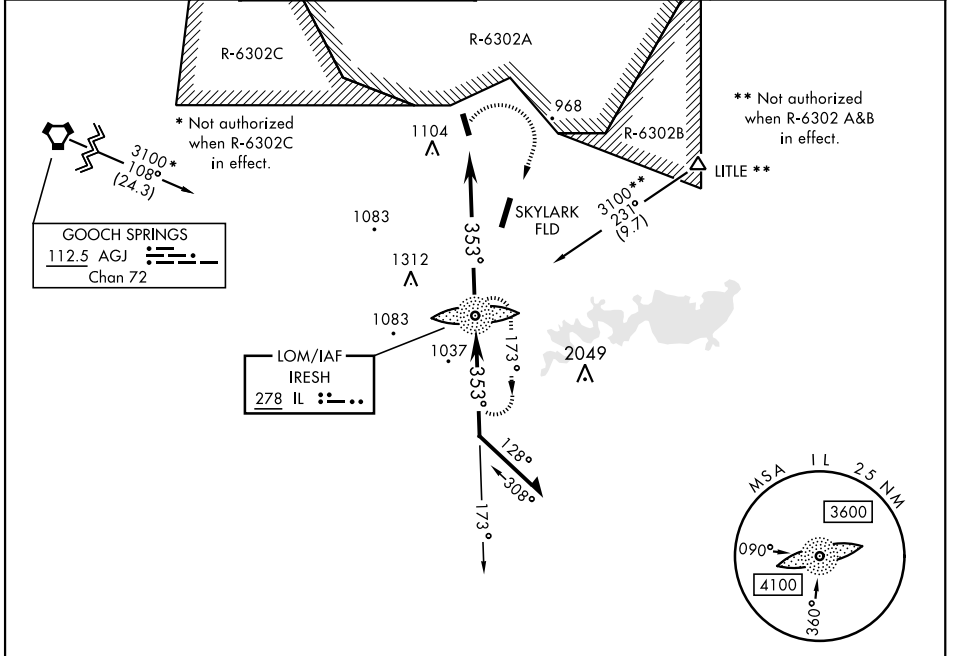


# COPTER NDB RWY 34

LOM IL <b>278</b>	APCH CRS <b>353°</b>	Rwy ldg TDZE Arprt Elev <b>3701</b> <b>914</b> <b>923</b>	AL-5031 [USA]	HOOD AHP (KHLR)
----------------------	-------------------------	--	---------------	-----------------

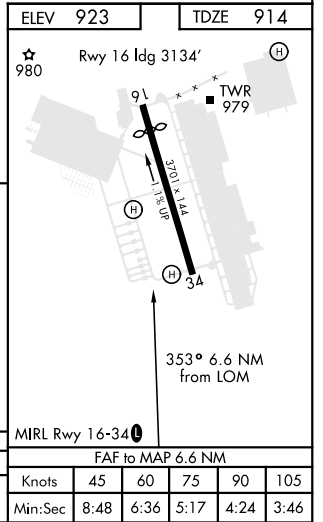
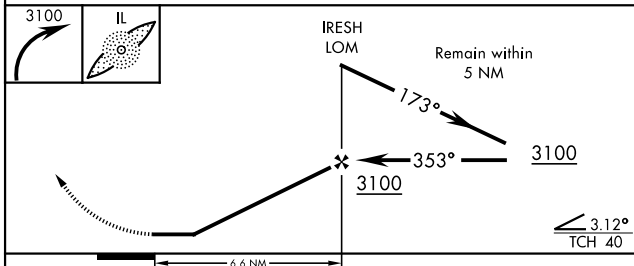
**NA** MISSED APPROACH: Climbing right turn to 3100 direct IL LOM and hold.

GRAY APP CON <b>120.075 323.15</b>	TOWER★ <b>119.65 269.45</b>	GND CON <b>133.85 225.4</b>	CLNC DEL <b>225.4</b>
---------------------------------------	--------------------------------	--------------------------------	--------------------------



Limit all segments  
airspeed to 90 KIAS.

When local altimeter setting not received,  
use SKYLARK FLD altimeter setting.



CATEGORY	COPTER			
S-34	1400-¾	486	(500-¾)	

# COPTER NDB RWY 34

SC-3, 16 JUN 2022 to 14 JUL 2022

SC-3, 16 JUN 2022 to 14 JUL 2022