

FORT HOOD, TEXAS

COPTER RNAV (GPS) RWY 34

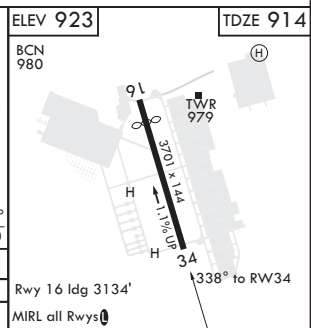
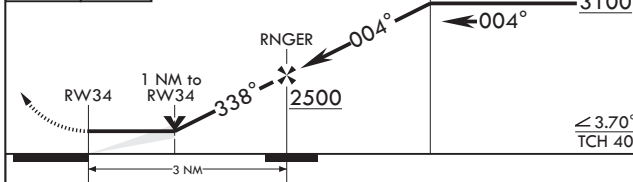
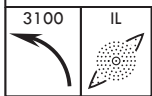
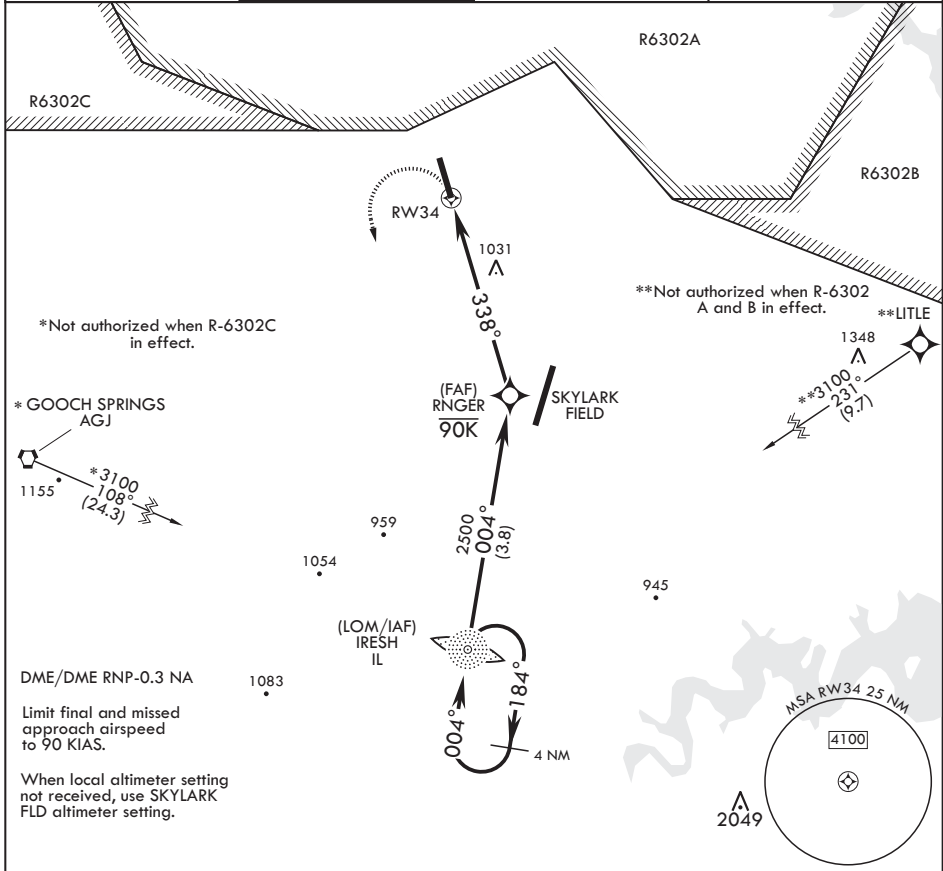
APCH CRS 338°	Rwy Idg TDZE Arpt Elev	3701 914 923
------------------	------------------------------	--------------------

AL-5031 (USA)

HOOD AHP (KHLR)

NA	MISSED APPROACH: Climbing left turn to 3100 direct IRESH LOM and hold.		
----	--	--	--

GRAY APP CON/DEP CON 120.075 323.15	TOWER* 119.65 269.45	GND CON 133.85 225.4	CLNC DEL 225.4
--	-------------------------	-------------------------	-------------------



CATEGORY	COPTER		
LNAV MDA	1320-1/2	406	(500-1/2)

FORT HOOD, TEXAS

31°08'N - 97°43'W

HOOD AHP (KHLR)

Orig

COPTER RNAV (GPS) RWY 34

SC-3, 16 JUN 2022 to 14 JUL 2022

SC-3, 16 JUN 2022 to 14 JUL 2022