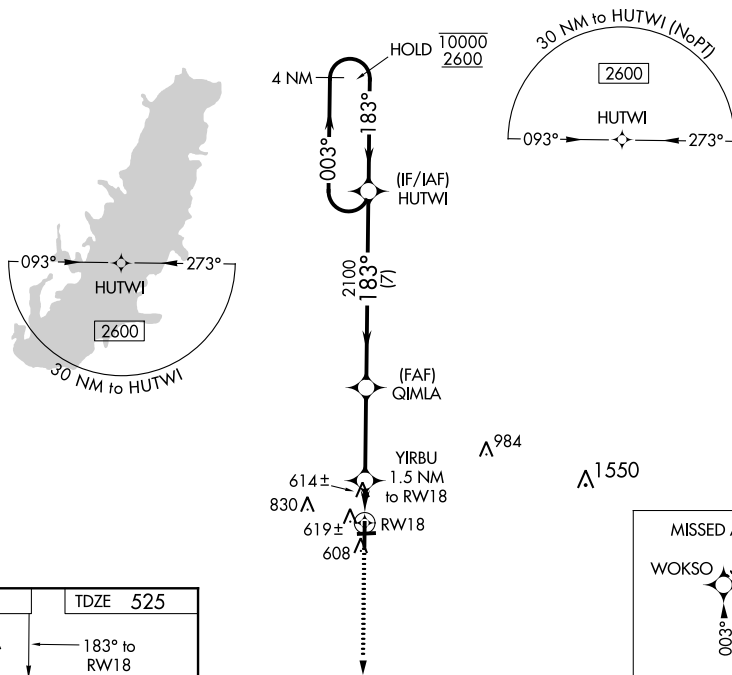


WAAS CH 77728 W18A	APP CRS 183°	Rwy Idg TDZE Apt Elev	5001 525 534
----------------------------------------	------------------------	-----------------------------	-----------------------------------------

RNAV (GPS) RWY 18

CENTRALIA MUNI (ENL)

RNP APCH.		MISSED APPROACH: Climb to 2600 direct WOKSO and hold.
<p>▼ Rwy 18 helicopter visibility reduction below $\frac{3}{4}$ SM NA. Circling Rwy 9, 27 NA at night.</p>		
AWOS-3 121.125	KANSAS CITY CENTER 127.7 351.825	UNICOM 122.8 (CTAF) 0

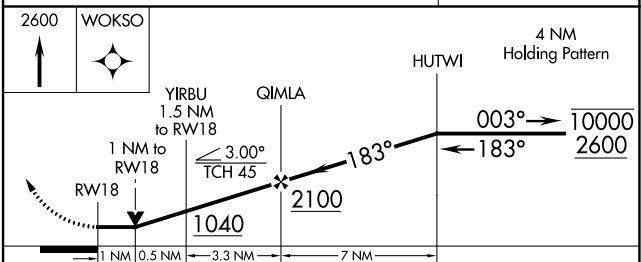


EC-3, 16 JUN 2022 to 14 JUL 2022

EC-3, 16 JUN 2022 to 14 JUL 2022

ELEV 534	TDZE 525
----------	----------

MIRL Rwy 9-27 and 18-36 **0**
REIL Rwy 18 and 36 **0**



WOKSO	4 NM Holding Pattern			
YIRBU 1.5 NM to RWY 18	QIMLA	HUTWI		
1 NM	0.5 NM	3.3 NM	7 NM	
CATEGORY	A	B	C	D
LP MDA	880-1		355 (400-1)	
LNAV MDA	900-1		375 (400-1)	
C CIRCLING	980-1 446 (500-1)	1000-1 466 (500-1)	1180-1 $\frac{3}{4}$ 646 (700-1 $\frac{3}{4}$)	1180-2 646 (700-2)