

WAAS CH <b>77909</b>	APP CRS <b>W27A</b> <b>269°</b>	Rwy Idg TDZE Apt Elev	<b>5503</b> <b>387</b> <b>387</b>
-------------------------	---------------------------------------	-----------------------------	---

# RNAV (GPS) RWY 27

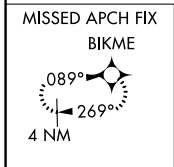
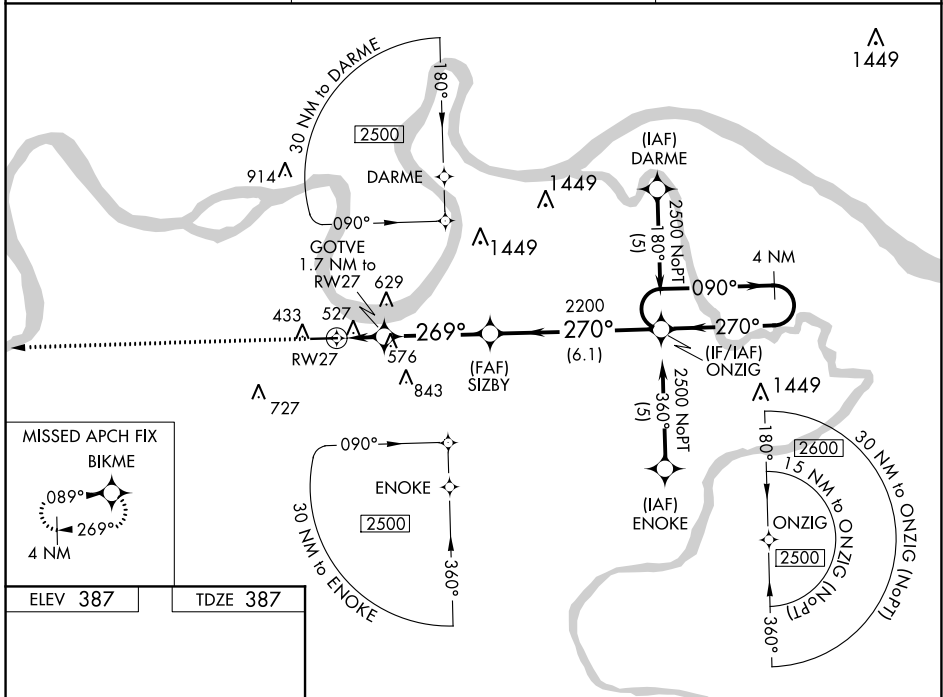
HENDERSON CITY-COUNTY (E.H.R.)

RNP APCH.

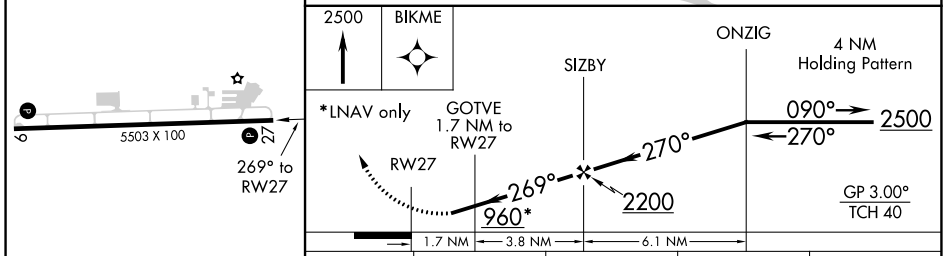
Baro-VNAV NA when using Evansville altimeter setting. For uncompensated Baro-VNAV systems, LNAV/VNAV NA below -15°C or above 48°C. Rwy 27 helicopter visibility reduction below 3/4 SM NA. When local altimeter setting not received, use Evansville altimeter setting and increase all DA 41 feet and all MDA 60 feet and LPV all Cats, LNAV/VNAV all Cats and LNAV Cats C/D visibilities 1/4 mile.

MISSED APPROACH: Climb to 2500 direct BIKME and hold.

AWOS-3PT <b>118.85</b>	EVANSVILLE APP CON ★ <b>124.025 257.8</b>	UNICOM <b>122.8</b> (CTAF) <b>0</b>
---------------------------	--	--



ELEV 387	TDZE 387
----------	----------



CATEGORY	A	B	C	D
LPV DA		733-1 1/4	346 (400-1 1/4)	
LNAV/VNAV DA		827-1 1/2	440 (500-1 1/2)	
LNAV MDA	840-1	453 (500-1)	840-1 3/8 453 (500-1 3/8)	840-1 1/2 453 (500-1 1/2)

SE-1, 16 JUN 2022 to 14 JUL 2022

SE-1, 16 JUN 2022 to 14 JUL 2022