

VORTAC PXV 113.3 Chan 80	APP CRS 150°	Rwy Idg TDZE Apt Elev	N/A N/A 387
--	------------------------	-----------------------------	--

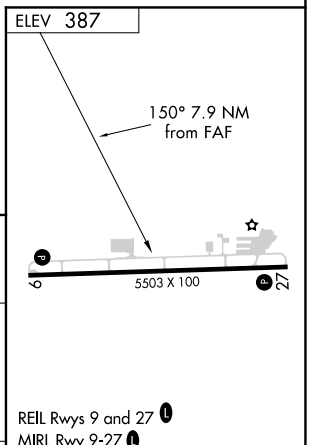
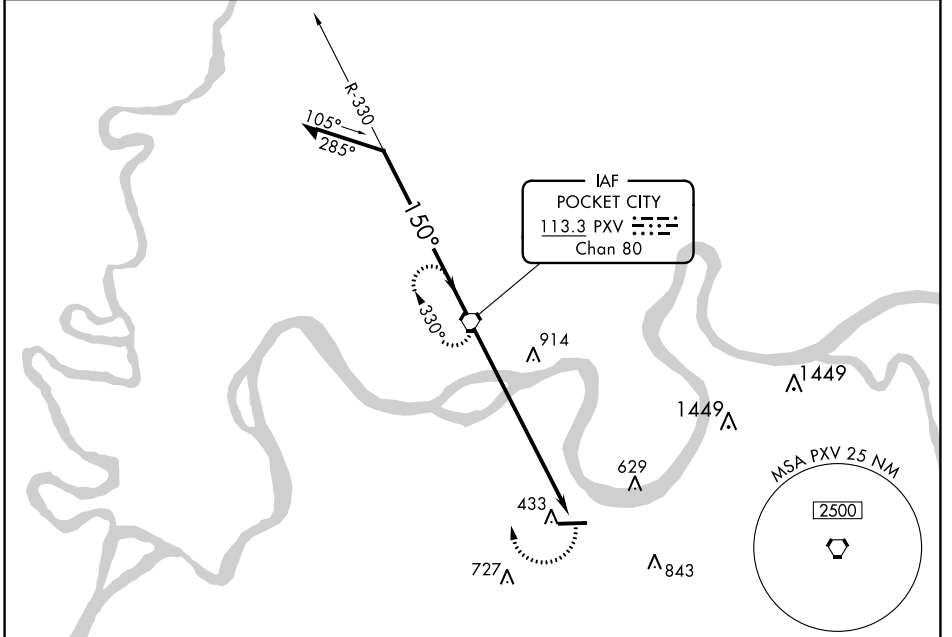
VOR-A

HENDERSON CITY-COUNTY (E.H.R.)

NA When local altimeter setting not received, use Evansville altimeter setting and increase all MDAs 80 feet, and increase Circling Cats C/D visibility ¼ SM.

MISSED APPROACH: Climbing right turn to 2100 direct PXV VORTAC and hold.

AWOS-3PT 118.85	EVANSVILLE APP CON ★ 124.025 257.8	UNICOM 122.8 (CTAF) 0
---------------------------	--	--



CATEGORY	A		B		C		D		FAF to MAP 7.9 NM					
	920-1		533 (600-1)		1040-1¾ 653 (700-1¾)		1200-2¾ 813 (900-2¾)		Knots	60	90	120	150	180
CIRCLING									Min:Seq	7:54	5:16	3:57	3:10	2:38

CATEGORY	A	B	C	D	FAF to MAP 7.9 NM							
CIRCLING	920-1 533 (600-1)		1040-1¾ 653 (700-1¾)		1200-2¾ 813 (900-2¾)		Knots	60	90	120	150	180
							Min:Seq	7:54	5:16	3:57	3:10	2:38

SE-1, 16 JUN 2022 to 14 JUL 2022

SE-1, 16 JUN 2022 to 14 JUL 2022