

LOC I-HIO <b>110.7</b>	APP CRS <b>128°</b>	Rwy Idg TDZE Apt Elev	<b>6600</b> <b>203</b> <b>208</b>
---------------------------	------------------------	-----------------------------	---

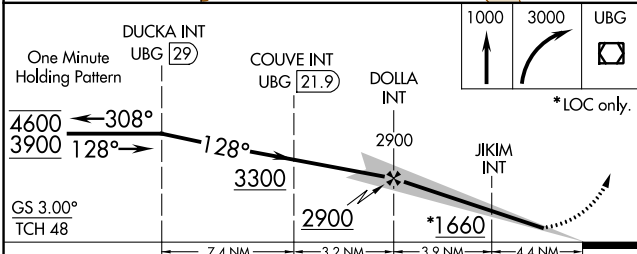
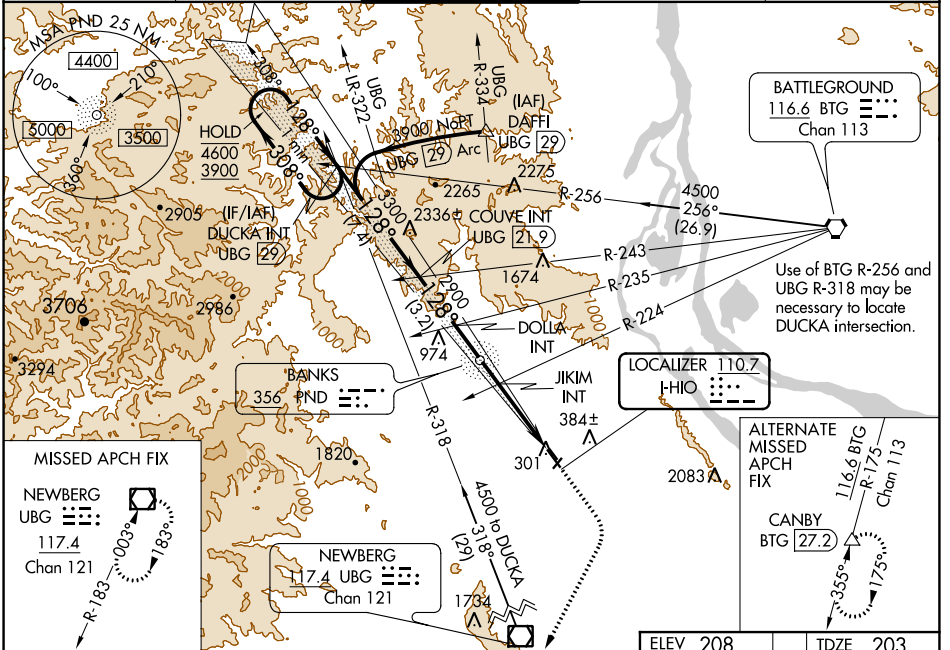
# ILS or LOC RWY 13R

PORTLAND-HILLSBORO (HIO)

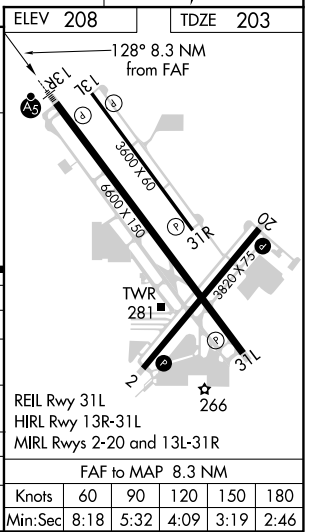
**⚠** Circling to Rwy 13L, 31R NA at night. Inop table does not apply to S-LOC Rwy 13R all Cats. For inop ALS, increase JKIM fix minimums Cat C/D visibility to 1 3/8 SM.

**MALS**  
 MISSED APPROACH: Climb to 1000 then climbing right turn to 3000 direct UBG VOR/DME and hold. Continue climb-in-hold to 3000.

ATIS <b>127.65</b>	PORTLAND APP CON <b>126.0 269.175</b>	HILLSBORO TOWER * <b>119.3 (CTAF) 239.3</b>	GND CON <b>121.7</b>	UNICOM <b>122.95</b>
-----------------------	--	--	-------------------------	-------------------------



CATEGORY	A	B	C	D
S-ILS 13R	403/24 200 (200-1/2)			
S-LOC 13R	1660/60 1457 (1500-1 1/4)	1660-1 1/2 1457 (1500-1 1/2)	1660-3	1457 (1500-3)
<b>C</b> CIRCLING	1660-1 1/4 1452 (1500-1 1/4)	1660-1 1/2 1452 (1500-1 1/2)	1660-3	1452 (1500-3)
JKIM FIX MINIMUMS (DUAL VOR RECEIVERS REQUIRED)				
S-LOC 13R	680/24	477 (500-1/2)	680/50	477 (500-1)
<b>C</b> CIRCLING	680-1 472 (500-1)	720-1 512 (600-1)	720-1 1/2 512 (600-1 1/2)	980-2 1/2 772 (800-2 1/2)



NW-1, 16 JUN 2022 to 14 JUL 2022

NW-1, 16 JUN 2022 to 14 JUL 2022