

COPTER RNAV (GPS) RWY 9

APCH CRS	Rwy Idg	4306
093°	TDZE	241
	Arpt Elev	244

AL-5069 [USA]

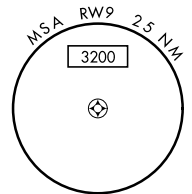
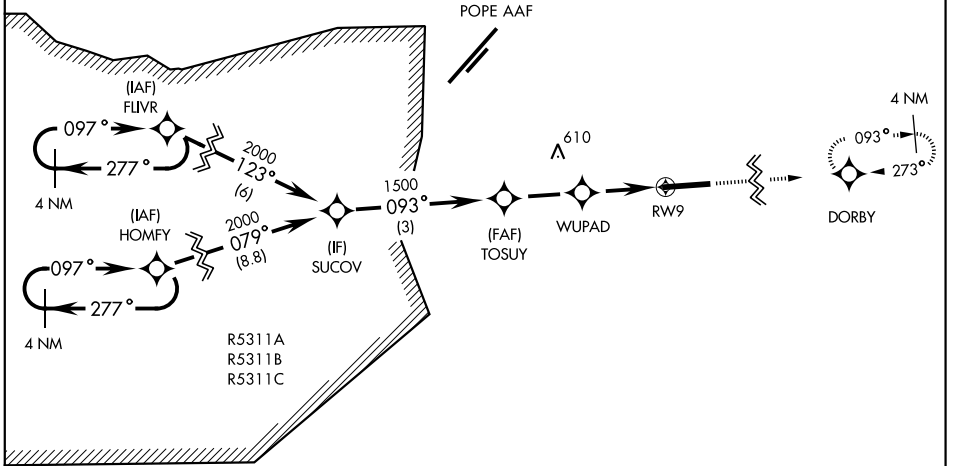
SIMMONS AAF (KFBG)

When local altimeter setting not received, use Pope AAF altimeter setting.
DME/DME RNP-0.3 NA

MISSED APPROACH: Climb to 2000 direct DORBY and hold.

ATIS	FAYETVILLE APP CON	SIMMONS TOWER *	GND CON	PAR
139.25	133.0 290.25	125.9 240.625	121.9 229.4	

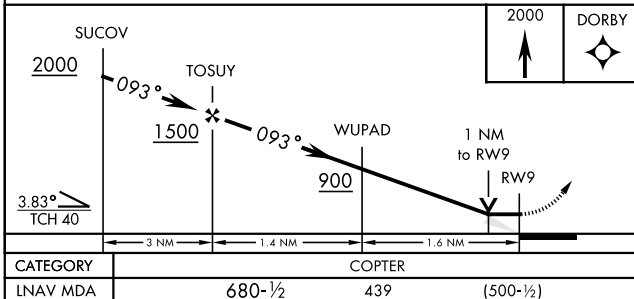
Limit final and missed approach airspeed to 90 KIAS



SE-2, 16 JUN 2022 to 14 JUL 2022

SE-2, 16 JUN 2022 to 14 JUL 2022

RADAR REQUIRED



ELEV	244	TDZE	241
Rwy 9 Idg 4306'			
Rwy 27 Idg 4814'			

REIL Rwy 27
MIRL Rwy 9-27

COPTER RNAV (GPS) RWY 9