

# RNAV (GPS) RWY 27

APCH CRS	Rwy Idg	<b>4814</b>
<b>273°</b>	TDZE	<b>228</b>
	Arprt Elev	<b>244</b>

AL-5069 [USA]

SIMMONS AAF (KFBG)

DME/DME RNP-0.3 NA.

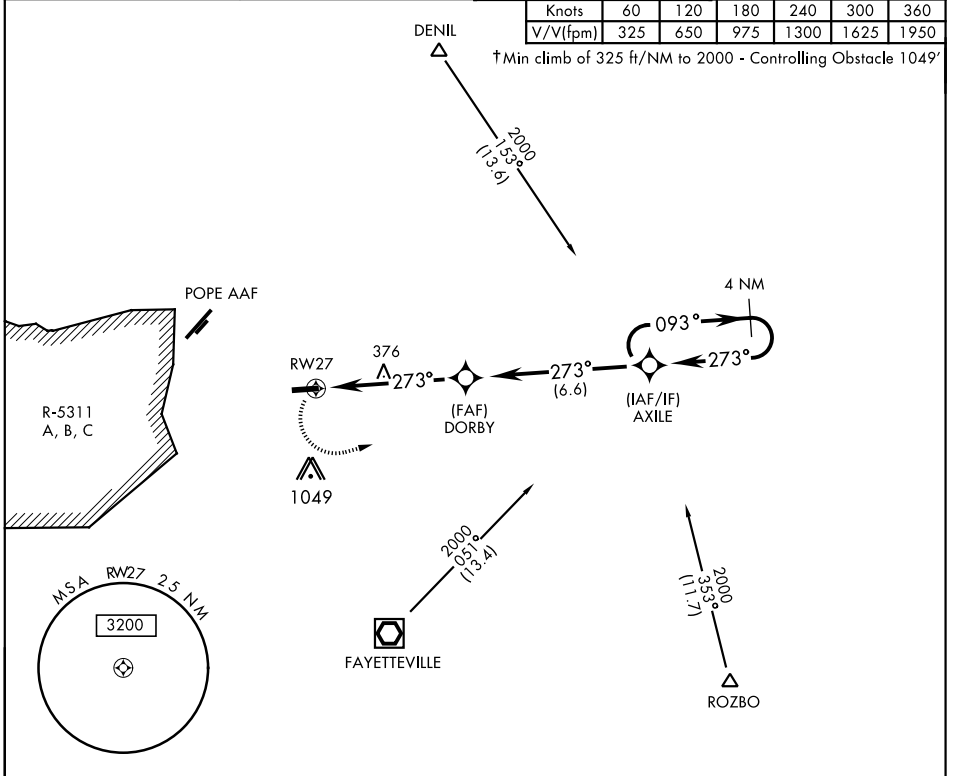
▼ When local altimeter setting not received, use Pope AAF altimeter setting.

† MISSED APPROACH: Climbing left turn to 2100 direct AXILE and hold.

ATIS <b>139.25</b>	FAYETTEVILLE APP CON <b>133.0 290.25</b>	SIMMONS TOWER ★ <b>125.9 240.625</b>	GND CON <b>121.9 229.4</b>	PAR
-----------------------	---	---	-------------------------------	-----

Knots	60	120	180	240	300	360
V/V(fpm)	325	650	975	1300	1625	1950

† Min climb of 325 ft/NM to 2000 - Controlling Obstacle 1049'



ELEV 244	TDZE 228	2100	AXILE	
Rwy 9 Idg 4306'				
Rwy 27 Idg 4814'				
380	TWR 418	5011 x 110	0.4% UP	
273° to RWY 27				
1.2 NM to RWY 27				
5.4 NM				
DORBY	AXILE	4 NM Holding Pattern	2000	
273°	093°	273°	2000	
3.04°	TCH 36			
CATEGORY	A	B	C	D
LNAV MDA	680-1 452 (500-1)		680-1 $\frac{3}{8}$ 452 (500-1 $\frac{3}{8}$ )	NA
CIRCLING	780-1 536 (600-1)		780-1 $\frac{1}{2}$ 536 (600-1 $\frac{1}{2}$ )	NA

# RNAV (GPS) RWY 27

SE-2, 16 JUN 2022 to 14 JUL 2022

SE-2, 16 JUN 2022 to 14 JUL 2022