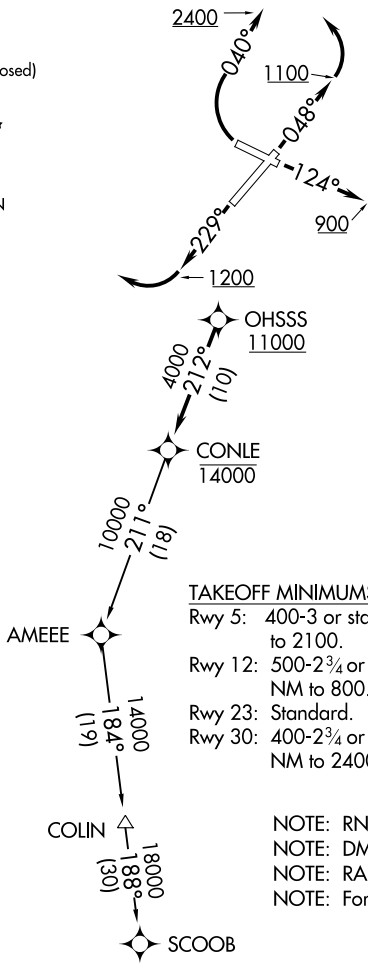


CONLE FOUR DEPARTURE (RNAV)

ATIS
 124.875
 CLNC DEL
 121.975
 126.9 (when tower closed)
 GND CON
 121.975
 FREDERICK TOWER *
 132.4 (CTAF)
 UNICOM
 122.95
 POTOMAC DEP CON
 126.1 338.25

**TOP ALTITUDE:
ASSIGNED BY ATC**



TAKEOFF MINIMUMS:

- Rwy 5: 400-3 or standard with minimum climb of 260' per NM to 2100.
- Rwy 12: 500-2¾ or standard with minimum climb of 410' per NM to 800.
- Rwy 23: Standard.
- Rwy 30: 400-2¾ or standard with minimum climb of 340' per NM to 2400.

- NOTE: RNAV 1.
- NOTE: DME/DME/IRU or GPS required.
- NOTE: RADAR required.
- NOTE: For turbojet aircraft only.

NOTE: Chart not to scale.

NE-3, 16 JUN 2022 to 14 JUL 2022

NE-3, 16 JUN 2022 to 14 JUL 2022



DEPARTURE ROUTE DESCRIPTION

TAKEOFF RWY 5: Climb heading 048° to 1100 before turning left.

TAKEOFF RWY 12: Climb heading 124° to 900 before proceeding westbound.

TAKEOFF RWY 23: Climb heading 229° to 1200 before turning right.

TAKEOFF RWY 30: Climbing right turn heading 040° to 2400 before proceeding on course.

Climb on assigned heading to ATC assigned altitude, for vectors to cross OHSSS at or above 11000, then on track 212° to cross CONLE at or below 14000, then on assigned transition. Expect filed altitude within 10 minutes after departure.

COLIN TRANSITION (CONLE4.COLIN)

SCOOB TRANSITION (CONLE4.SCOOB)