

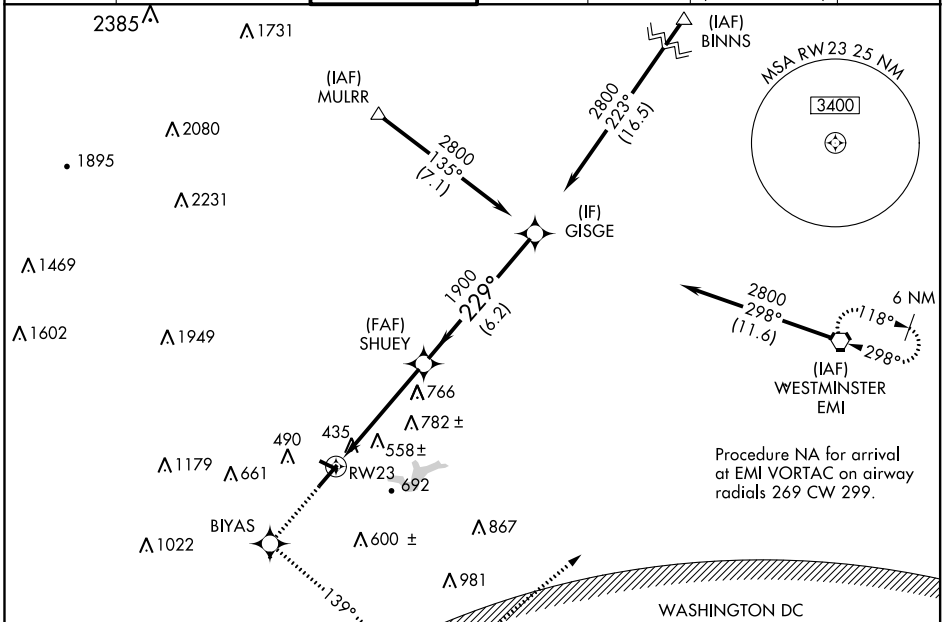
WAAS CH 81802 W23A	APP CRS 229°	Rwy Idg TDZE 296 Apt Elev 306	5219
--	------------------------	---	-------------

RNAV (GPS) Z RWY 23

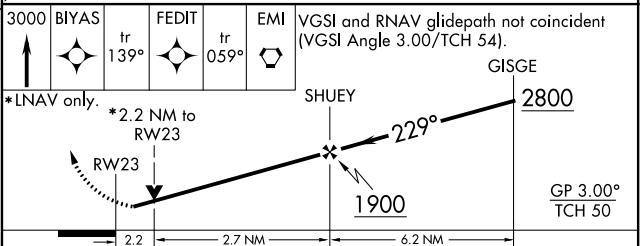
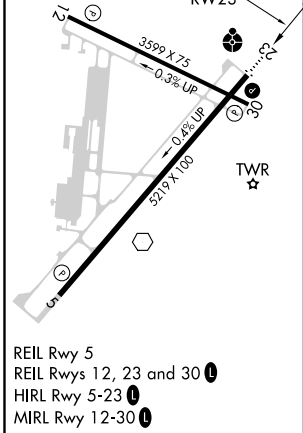
FREDERICK MUNI (FDK)

RNP APCH.	<p>⚠ Rwy 23 helicopter visibility reduction below 3/4 SM NA. Circling Rwy 30 NA at night. For uncompensated Baro-VNAV systems, LNAV/VNAV NA below -15°C or above 54°C. Inop table does not apply to LPV, LNAV/VNAV all Cats, and LNAV Cat C.</p>	ODALS ⚡	MISSED APPROACH: Climb to 3000 direct BIYAS WP and via 139° track to FEDIT WP and via 059° track to EMI VORTAC and hold.
-----------	---	------------	--

ATIS 124.875	POTOMAC APP CON 126.1 338.25	FREDERICK TOWER ★ 132.4 (CTAF) 0	GND CON 121.975	CLNC DEL 121.975	CLNC DEL 126.9 (When twr closed)	UNICOM 122.95
------------------------	--	---	---------------------------	----------------------------	---	-------------------------



ELEV 306	TDZE 296
----------	----------



CATEGORY	A	B	C	D
LPV DA		690-1½	394 (400-1½)	
LNAV/VNAV DA		1020-2½	724 (800-2½)	
LNAV MDA	1020-¾	724 (800-¾)	1020-2	1020-2¼
			724 (800-2)	724 (800-2¼)
<input checked="" type="checkbox"/> CIRCLING	1020-1	714 (800-1)	1100-2¼	1200-2¾
			794 (800-2¼)	894 (900-2¾)