

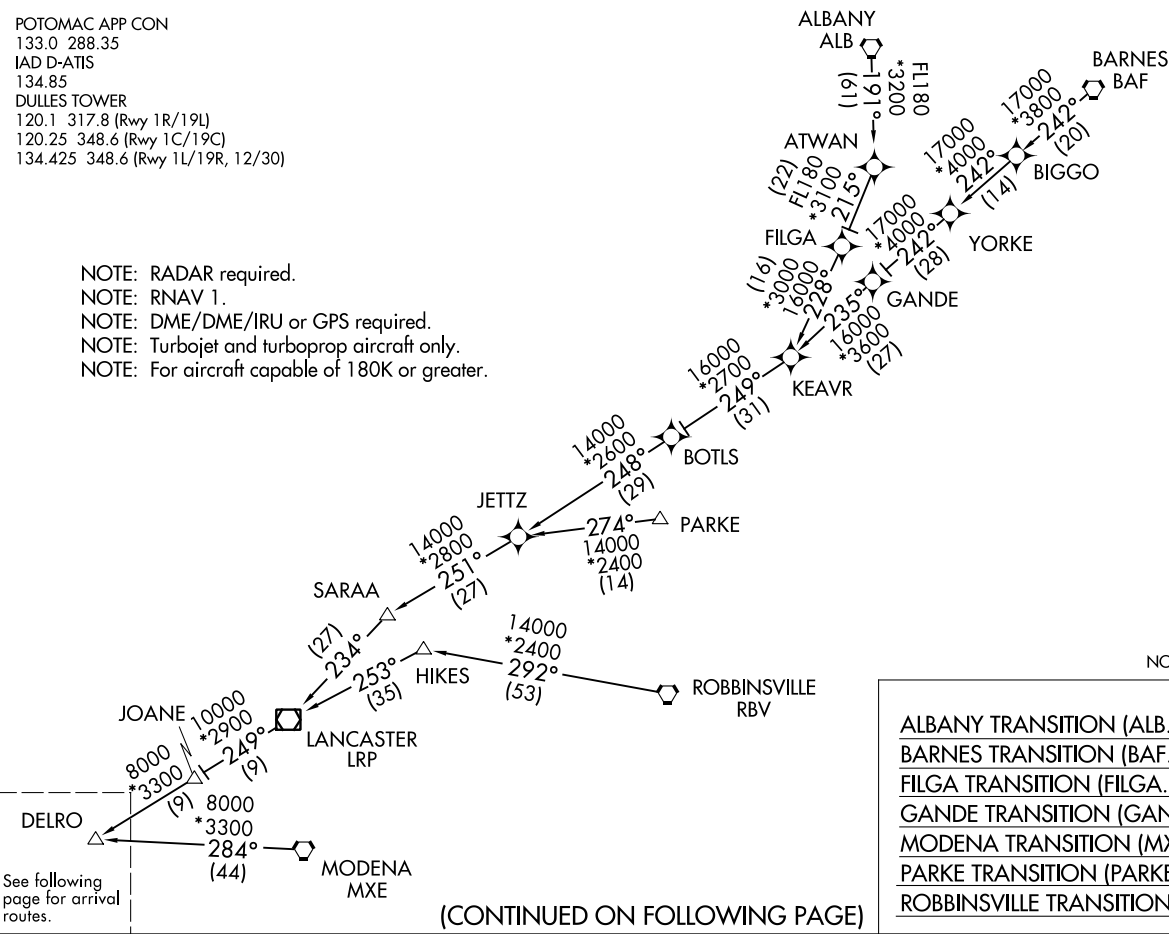
(DELRO.HYPER8) 31DEC20

HYPER EIGHT ARRIVAL (RNAV) Transition Routes

WASHINGTON, DC

POTOMAC APP CON  
 133.0 288.35  
 IAD D-ATIS  
 134.85  
 DULLES TOWER  
 120.1 317.8 (Rwy 1R/19L)  
 120.25 348.6 (Rwy 1C/19C)  
 134.425 348.6 (Rwy 1L/19R, 12/30)

NOTE: RADAR required.  
 NOTE: RNAV 1.  
 NOTE: DME/DME/IRU or GPS required.  
 NOTE: Turbojet and turboprop aircraft only.  
 NOTE: For aircraft capable of 180K or greater.



See following page for arrival routes.

(CONTINUED ON FOLLOWING PAGE)

- ALBANY TRANSITION (ALB.HYPER8)
- BARNES TRANSITION (BAF.HYPER8)
- FILGA TRANSITION (FILGA.HYPER8)
- GANDE TRANSITION (GANDE.HYPER8)
- MODENA TRANSITION (MXE.HYPER8)
- PARKE TRANSITION (PARKE.HYPER8)
- ROBBINSVILLE TRANSITION (RBV.HYPER8)

NOTE: Chart not to scale.

(DELRO.HYPER8) 21168

AL-5100 (FAA) Transition Routes

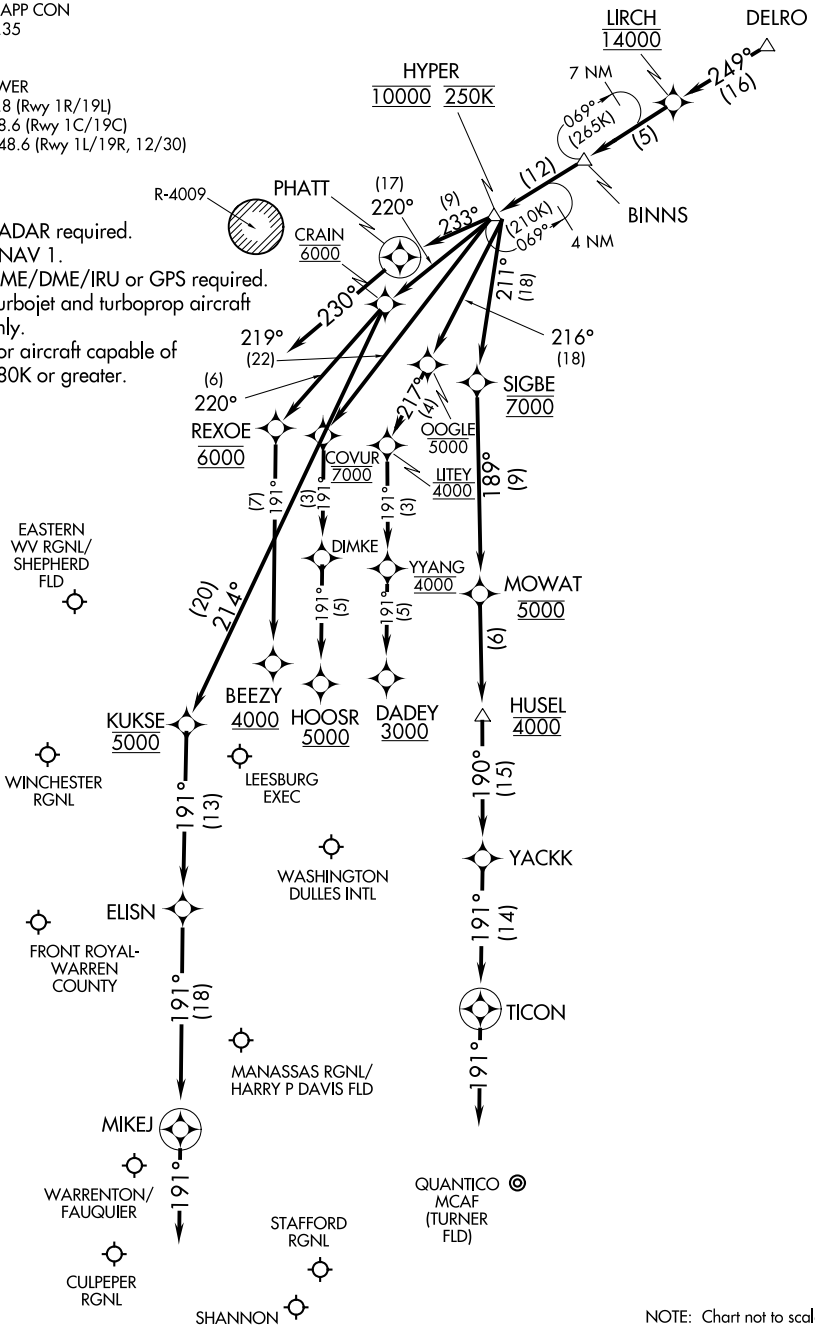
WASHINGTON, DC

# HYPER EIGHT ARRIVAL (RNAV) Arrival Routes

WASHINGTON, DC

POTOMAC APP CON  
 133.0 288.35  
 IAD D-ATIS  
 134.85  
 DULLES TOWER  
 120.1 317.8 (Rwy 1R/19L)  
 120.25 348.6 (Rwy 1C/19C)  
 134.425 348.6 (Rwy 1L/19R, 12/30)

- NOTE: RADAR required.
- NOTE: RNAV 1.
- NOTE: DME/DME/IRU or GPS required.
- NOTE: Turbojet and turboprop aircraft only.
- NOTE: For aircraft capable of 180K or greater.



NOTE: Chart not to scale.

NE-3, 16 JUN 2022 to 14 JUL 2022

NE-3, 16 JUN 2022 to 14 JUL 2022

# HYPER EIGHT ARRIVAL (RNAV) Arrival Routes

WASHINGTON, DC

ARRIVAL ROUTE DESCRIPTION

IAD: From DELRO on track 249° to cross LIRCH at 14000, then on track 249° to BINNS, then on track 249° to cross HYPER at 10000 and at 250K.

Landing IAD Rwy 1C/R: From HYPER on track 211° to cross SIGBE at 7000, then on track 189° to cross MOWAT at 5000, then on track 189° to cross HUSEL at 4000, then on track 190° to YACKK, then on track 191° to TICON, then on track 191°. Expect RADAR vectors to final approach course.

Landing IAD Rwy 1L: From HYPER on track 220° to cross CRAIN at 6000, then on track 214° to cross KUKSE at 5000, then on track 191° to ELISN, then on track 191° to MIKEJ, then on track 191°. Expect RADAR vectors to final approach course.

Landing IAD Rwy 19C: From HYPER on track 219° to cross COVUR at 7000, then on track 191° to DIMKE, then on track 191° to cross HOOSR at or above 5000. Expect ILS or LOC Rwy 19C approach.

Landing IAD Rwy 19L: From HYPER on track 216° to cross OOGLE at or below 5000, then on track 217° to cross LITEY at 4000, then on track 191° to cross YYANG at 4000, then on track 191° to cross DADEY at or above 3000. Expect ILS or LOC Rwy 19L approach.

Landing IAD Rwy 19R: From HYPER on track 220° to cross CRAIN at 6000, then on track 220° to cross REXOE at 6000, then on track 191° to cross BEEZY at or above 4000. Expect ILS or LOC Rwy 19R approach.

Landing NYG/CJR/EZF/RMN/HWY/HEF: From DELRO on track 249° to cross LIRCH at 14000, then on track 249° to BINNS, then on track 249° to cross HYPER at 10000 and at 250K, then on track 211° to cross SIGBE at 7000, then on track 189° to cross MOWAT at 5000, then on track 189° to cross HUSEL at 4000, then on track 190° to YACKK, then on track 191° to TICON, then on track 191°. Expect RADAR vectors to final approach course.

Landing MRB/JYO/FRR/OKV: From DELRO on track 249° to cross LIRCH at 14000, then on track 249° to BINNS, then on track 249° to cross HYPER at 10000 and at 250K, then on track 233° to PHATT. Then on heading 230° or as assigned by ATC. Expect RADAR vectors to final approach course.

NE-3, 16 JUN 2022 to 14 JUL 2022

NE-3, 16 JUN 2022 to 14 JUL 2022