

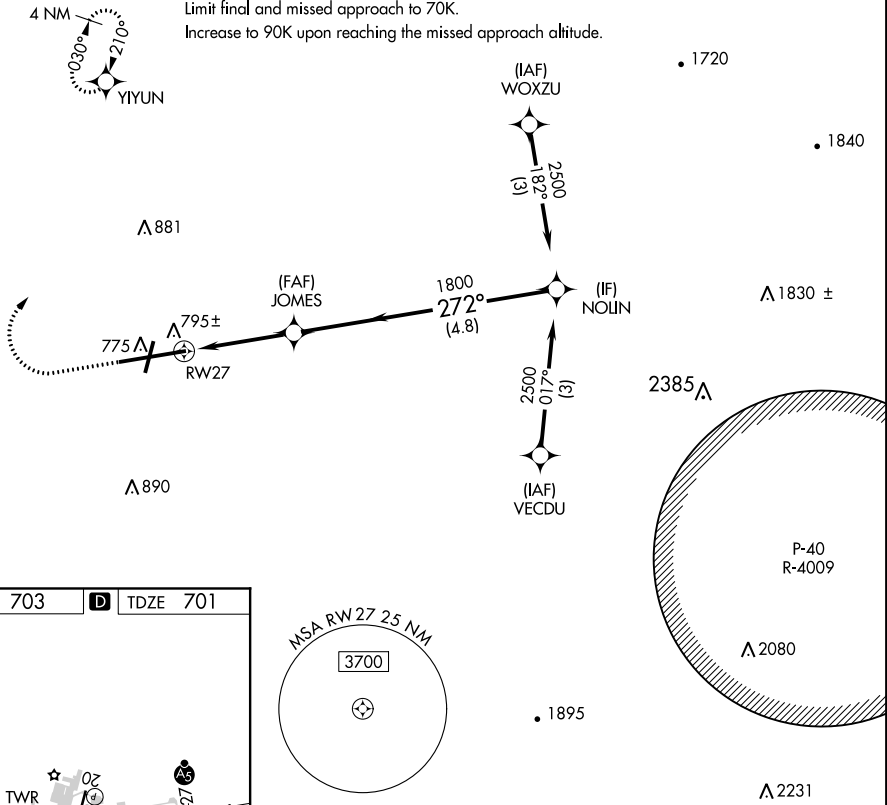
APP CRS	Rwy Idg	7000
272°	TDZE	701
	Apt Elev	703

COPTER RNAV (GPS) RWY 27

HAGERSTOWN RGNL/RICHARD A HENSON FLD (HGR)

<p>⚠ Inop table does not apply. DME/DME RNP-0.3 NA. VDP NA with Martinsburg altimeter setting. When local altimeter setting not received, use Martinsburg altimeter setting and increase MDA 80 feet.</p>		<p>MALSRL</p>	<p>MISSED APPROACH: Climb to 1200 then climbing right turn to 2500 direct YIYUN and hold.</p>	
ASOS	POTOMAC APP CON	HAGERSTOWN TOWER ★	GND CON	UNICOM
126.375	126.825 239.025	120.3 (CTAF) 0 225.4	120.8	122.95

Limit initial and intermediate approach to 90K.
Limit final and missed approach to 70K.
Increase to 90K upon reaching the missed approach altitude.



NE-3, 16 JUN 2022 to 14 JUL 2022

NE-3, 16 JUN 2022 to 14 JUL 2022

ELEV 703	D	TDZE 701
----------	----------	----------

1200

2500

YIYUN

VGSI and descent angles not coincident
(VGSI Angle 3.00/TCH 55).

4.98°
HCH 55

JOMES

NOLIN

2500

272°

1800

1 NM to RWY 27

1 NM

1 NM

4.8 NM

RWY 27

REIL Rwy 2 and 20

REIL Rwy 9

MIRL Rwy 2-20

HIRL Rwy 9-27

CATEGORY	COPTER	
LNAV MDA	1060-½ 359 (400-½)	