


WAAS CH 86911 W27A	APP CRS 272°	Rwy Idg TDZE Apt Elev	7000 701 703
--	------------------------	-----------------------------	---

RNAV (GPS) RWY 27

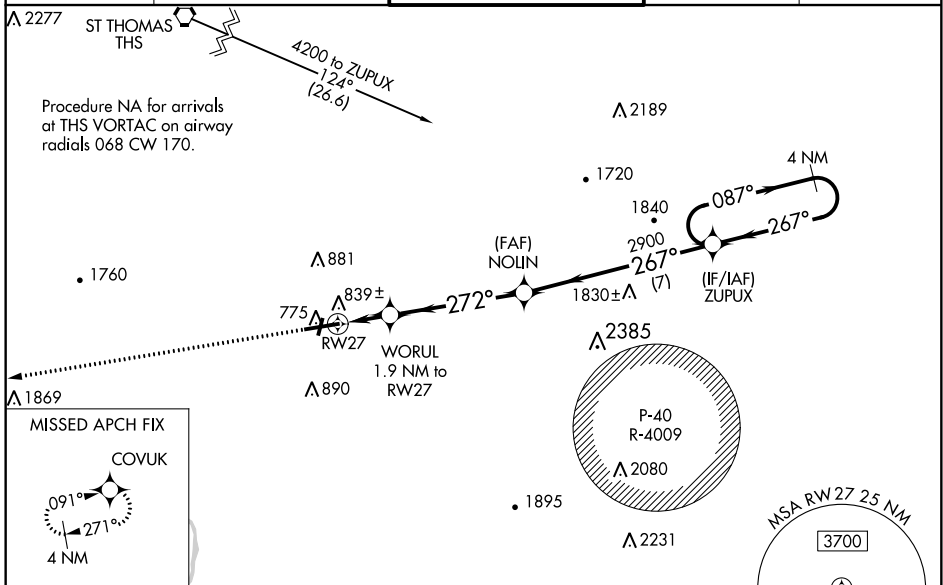
HAGERSTOWN RGNL/RICHARD A HENSON FLD (HGR)

⚠ Rwy 20 helicopter visibility reduction below 1 SM NA. Circling Rwy 20 NA at night. For uncompensated Baro-VNAV systems, LNAV/VNAV NA below -14°C (7°F) or above 54°C (130°F). DME/DME RNP-0.3 NA. When local altimeter setting not received, use Martinsburg altimeter setting and increase all DA 70 feet and all MDA 80 feet; increase LNAV/VNAV all Cats, LNAV Cats C-D and Circling Cat D visibility ¼ mile. VDP and Baro-VNAV NA with Martinsburg altimeter setting.

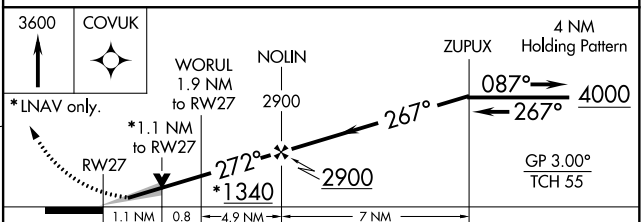
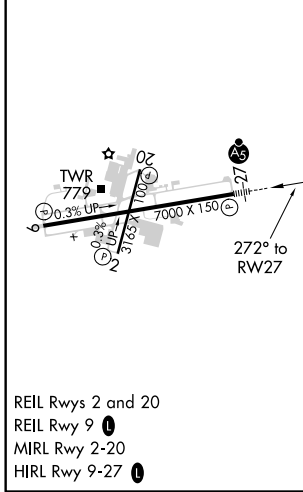
MALSR


MISSED APPROACH:
Climb to 3600 direct COVUK and hold.

ASOS 126.375	POTOMAC APP CON 126.825 239.025	HAGERSTOWN TOWER * 120.3 (CTAF) 0 225.4	GND CON 120.8	UNICOM 122.95
------------------------	---	---	-------------------------	-------------------------



ELEV 703	D	TDZE 701
----------	----------	----------



CATEGORY	A	B	C	D
LPV DA		901-1/2	200 (200-1/2)	
LNAV/VNAV DA		1035-5/8	334 (400-5/8)	
LNAV MDA	1100-1/2	399 (400-1/2)	1100-3/4	399 (400-3/4)
C CIRCLING	1160-1	457 (500-1)	1200-1 1/2 497 (500-1 1/2)	1320-2 617 (700-2)

NE-3, 16 JUN 2022 to 14 JUL 2022

NE-3, 16 JUN 2022 to 14 JUL 2022