


LOC I-HHR	APP CRS	Rwy Idg	<b>4193</b>
<b>109.1</b>	<b>253°</b>	TDZE	<b>63</b>
		Apt Elev	<b>66</b>

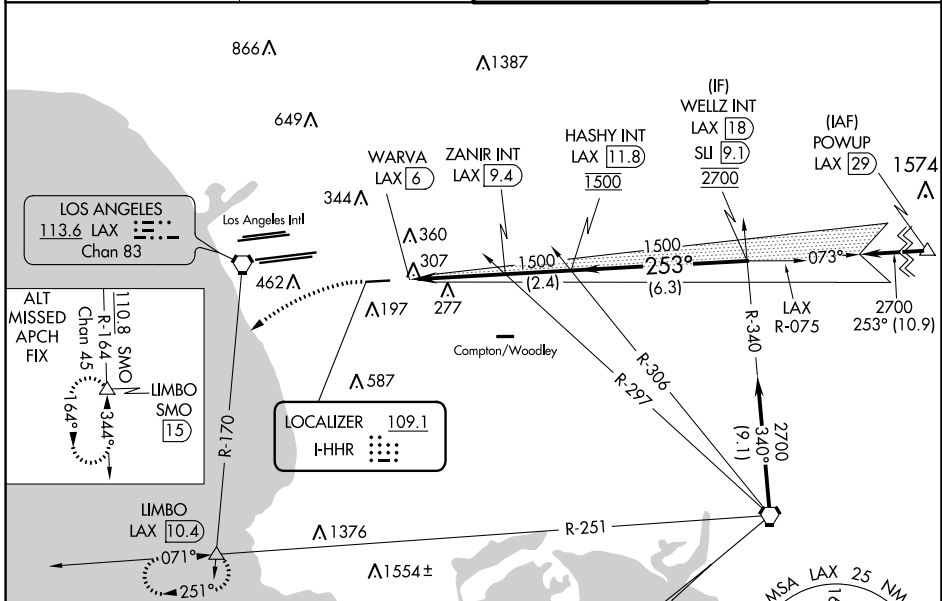
# LOC RWY 25

JACK NORTHROP FLD/HAWTHORNE MUNI (HHR)

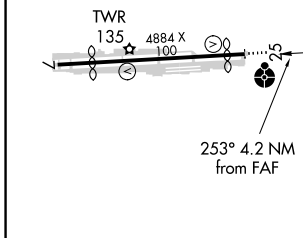
**⚠** Inop table does not apply. Rwy 25 helicopter visibility reduction below 1 SM NA. Circling Rwy 7 NA at night. When local altimeter setting not received, use Los Angeles Intl altimeter setting. Simultaneous approach authorized with LAX 25L/R 24L/R. Circling NA north of Rwy 7-25. DME from LAX VORTAC. Simultaneous reception of I-HHR and LAX DME required.

**ODALS**  
 MISSED APPROACH: Climbing left turn to 3000 on heading 210° and LAX VORTAC R-170 to LIMBO INT/LAX 10.4 DME and hold.

ATIS <b>118.4</b>	SOCAL APP CON <b>124.9 269.0</b>	HAWTHORNE TOWER* <b>121.1(CTAF) 0 257.8</b>	GND CON <b>125.1</b>
----------------------	-------------------------------------	--	-------------------------

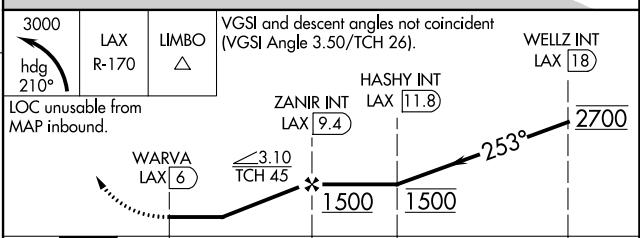
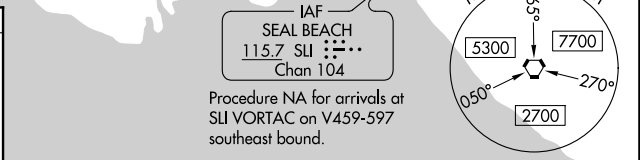


ELEV 66	<b>D</b>	TDZE 63
---------	----------	---------



REIL Rwy 25  
MIRL Rwy 7-25

FAF to MAP 3.4 NM					
Knots	60	90	120	150	180
Min:Sec	3:24	2:16	1:42	1:22	1:08



CATEGORY	A	B	C	D
S-25	580-1	517 (600-1)	580-1 3/8	517 (600-1 3/8)
<b>C</b> CIRCLING	620-1	554 (600-1)	780-2 714 (800-2)	780-2 1/4 714 (800-2 1/4)

# LOC RWY 25

SW-3, 16 JUN 2022 to 14 JUL 2022

SW-3, 16 JUN 2022 to 14 JUL 2022