

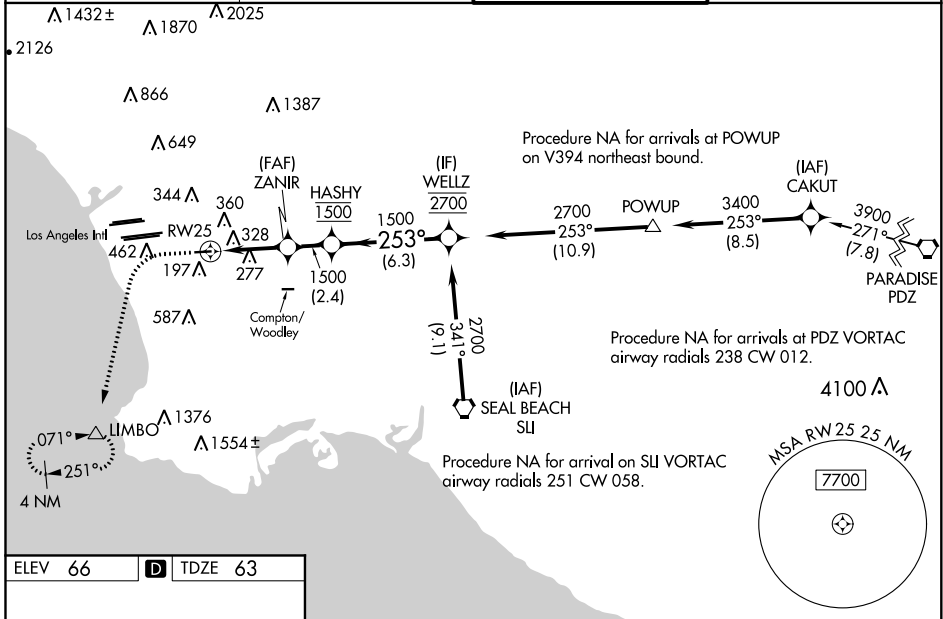
WAAS CH 65825 W25A	APP CRS 253°	Rwy Idg 4193 TDZE 63 Apt Elev 66
--	------------------------	---

RNAV (GPS) RWY 25

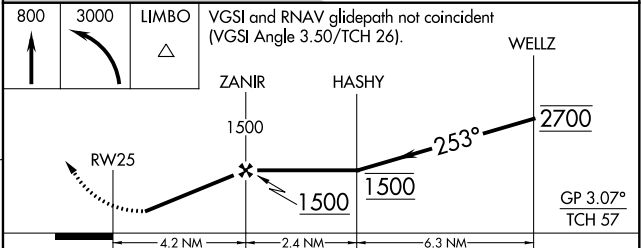
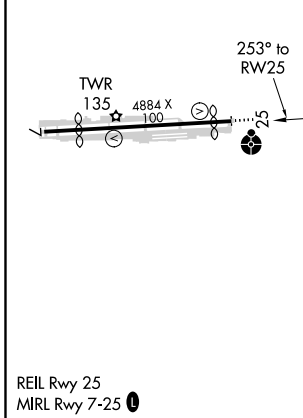
JACK NORTHROP FLD/HAWTHORNE MUNI (HHR)

RNP APCH-GPS.		MISSED APPROACH: Climb to 800 then climbing left turn to 3000 direct LIMBO and hold, continue climb-in-hold to 3000.
⚠ Circling NA north of Rwy 7-25. Rwy 25 helicopter visibility reduction below 1 SM NA. For uncompensated Baro-VNAV systems, procedure NA below 6°C or above 54°C. Circling Rwy 7 NA at night. For inop ALS increase LNAV/VNAV Cats A/B visibilities to 1¼ SM. Inop table does not apply to LPV and LNAV. Simultaneous approach authorized with LAX 25L/R, 24L/R. LNAV and LNAV/VNAV only approach NA during simultaneous operations. Use of FD or AP providing RNAV track guidance required during simultaneous operations.		

ATIS 118.4	SOCAL APP CON 124.9 269.0	HAWTHORNE TOWER ★ 121.1(CTAF) 0 257.8	GND CON 125.1
----------------------	-------------------------------------	---	-------------------------



ELEV 66	D TDZE 63
---------	------------------



CATEGORY	A	B	C	D
LPV DA		576-1⅜	513 (600-1⅝)	
LNAV/VNAV DA		653-1⅝	590 (600-1⅝)	
LNAV MDA	580-1	517 (600-1)	580-1⅜	517 (600-1⅝)
C CIRCLING	620-1	554 (600-1)	780-2 714 (800-2)	780-2¼ 714 (800-2¼)

RNAV (GPS) RWY 25

SW-3, 16 JUN 2022 to 14 JUL 2022

SW-3, 16 JUN 2022 to 14 JUL 2022