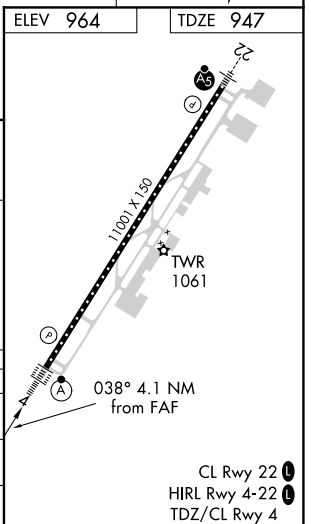
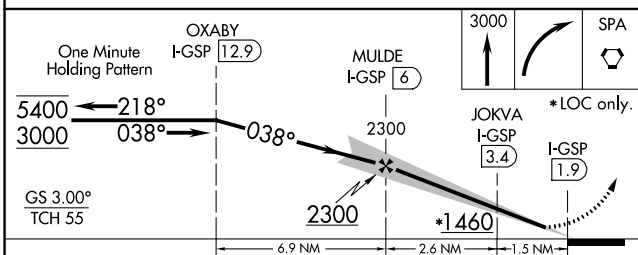
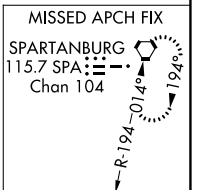
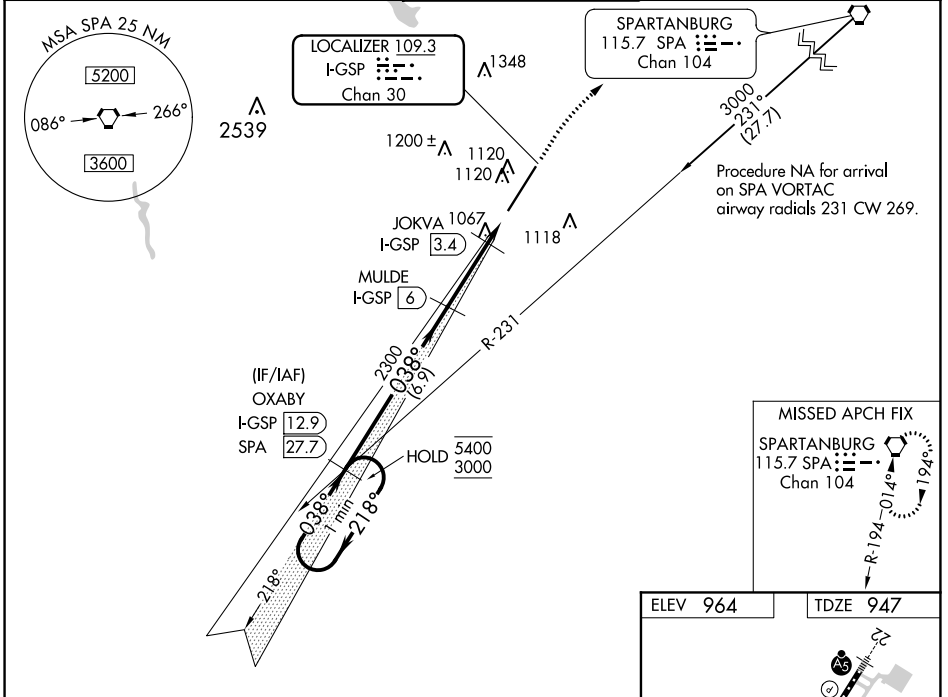


LOC/DME I-GSP 109.3 Chan 30	APP CRS 038°	Rwy ldg 11001 TDZE 947 Apt Elev 964
---	------------------------	--

ILS or LOC RWY 4

GREENVILLE SPARTANBURG INTL (GSP)

DME required. For inop ALS, increase S-LOC 4 Cats C and D visibility to RVR 5500. When local altimeter setting not received, use Greenville Downtown altimeter setting: increase DA to 1176 feet; increase all MDAs 40 feet and visibility S-LOC 4 Cat C/D to RVR 4000 and Circling Cat D ¼ SM. For inop ALS, when using Greenville Downtown altimeter setting, increase S-LOC 4 Cats C/D visibility to RVR 6000.		ALSF-2 	MISSED APPROACH: Climb to 3000 then right turn direct SPA VORTAC and hold.
ATIS 134.25	GREER APP CON * 118.8 270.275	GREER TOWER * 120.1(CTAF) 251.15	GND CON 121.9
		UNICOM 122.95	



CATEGORY	A	B	C	D
S-ILS 4	1147/18 200 (200-1/2)			
S-LOC 4	1320/24	373 (400-1/2)	1320/35	373 (400-5/8)
C CIRCLING	1440-1	476 (500-1)	1480-1 1/2 516 (600-1 1/2)	1700-2 1/4 736 (800-2 1/4)

SE-2, 16 JUN 2022 to 14 JUL 2022

SE-2, 16 JUN 2022 to 14 JUL 2022