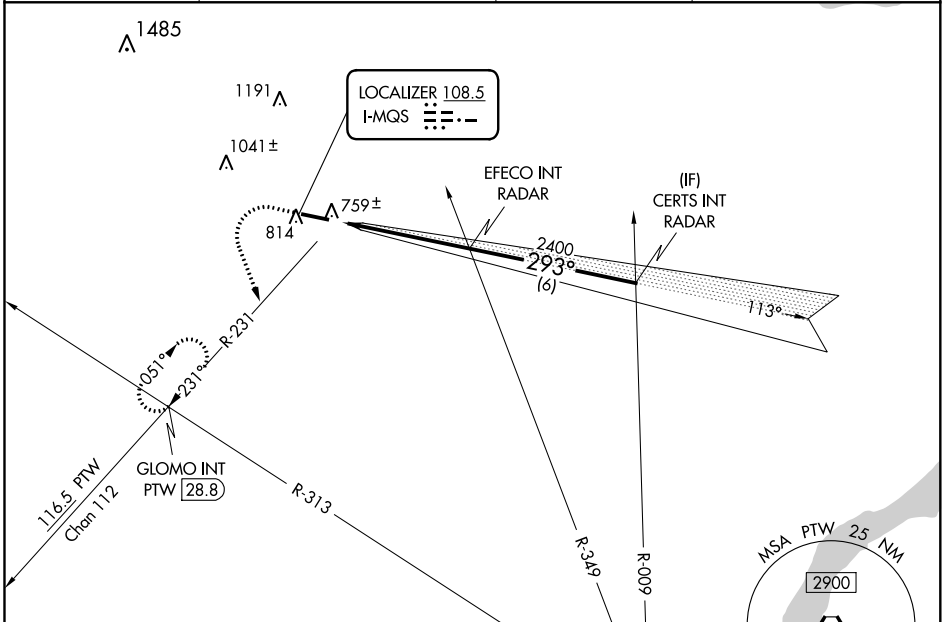


LOC I-MQS 108.5	APP CRS 293°	Rwy Idg TDZE Apt Elev	5400 660 660
---------------------------	------------------------	-----------------------------	---

ILS or LOC RWY 29
CHESTER COUNTY G O CARLSON (MQS)

RADAR required for procedure entry.		MISSED APPROACH: Climb to 3000 then climbing left turn to 3000 on heading 170° and PTW R-231 to GLOMO INT/ PTW 28.8 DME and hold, continue climb-in-hold to 3000.	
AWOS-3 126.25	PHILADELPHIA APP CON 124.35 319.15	CLNC DEL 125.6	UNICOM 122.7 (CTAF)

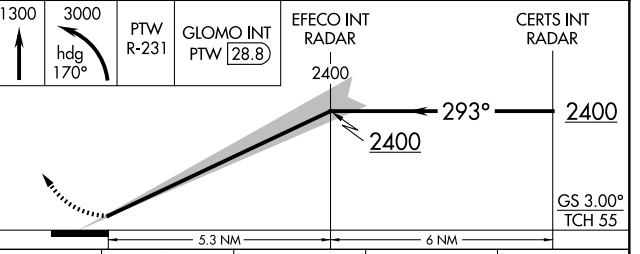
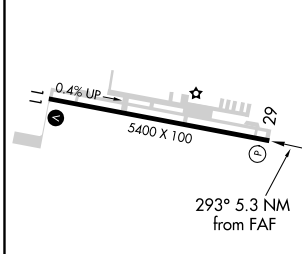


NE-4, 16 JUN 2022 to 14 JUL 2022

NE-4, 16 JUN 2022 to 14 JUL 2022

ELEV 660	TDZE 660
-----------------	-----------------

DUPONT
114.0 DGO
Chan 87



		1300	3000	PTW R-231	GLOMO INT PTW 28.8	EFECO INT RADAR 2400	CERTS INT RADAR 2400
			hdg 170°			2400	2400
						293°	2400
							GS 3.00° TCH 55
						5.3 NM	6 NM
CATEGORY		A	B	C	D		
S-ILS 29			910-3/4	250 (300-3/4)			
S-LOC 29			1040-1	380 (400-1)			
C CIRCLING		1140-1 480 (500-1)	1240-1 580 (600-1)	1260-1 1/2 600 (600-1 1/2)	1420-2 1/2 760 (800-2 1/2)		

HIRL Rwy 11-29
REIL Rwys 11 and 29

FAF to MAP 5.3 NM

Knots	60	90	120	150	180
Min:Sec	5:18	3:32	2:39	2:07	1:46