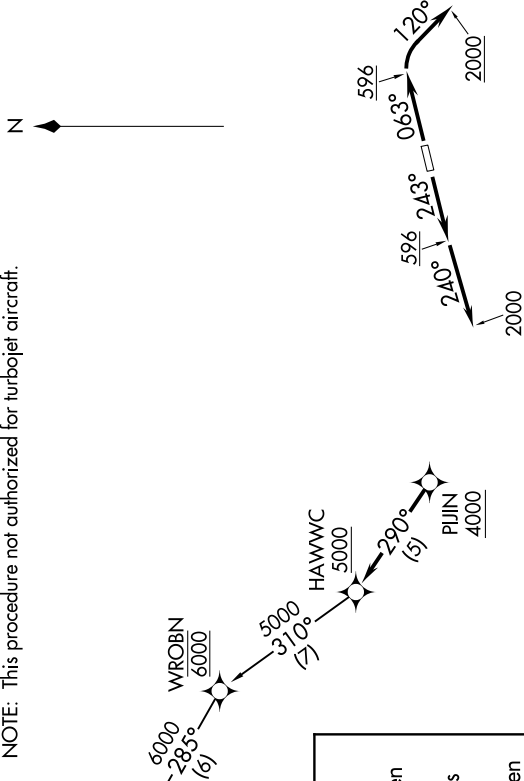


SW-3, 16 JUN 2022 to 14 JUL 2022

**TOP ALTITUDE:**  
6000



- NOTE: RADAR required.
- NOTE: RNAV 1.
- NOTE: DME/DME/IRU or GPS required.
- NOTE: This procedure not authorized for turbojet aircraft.



ATIS 125.05  
 GND CON 121.8  
 SOCAL DEP CON 125.35 316.125

**DEPARTURE ROUTE DESCRIPTION**

**TAKEOFF RUNWAY 6:** Climb heading 063° to 596, then right turn on heading 120° to 2000 for vectors to PUJIN, cross PUJIN at or above 4000, then on track 290° to cross HAWWC at or above 5000, thence . . . .

**TAKEOFF RUNWAY 24:** Climb heading 243° to 596, then on heading 240° to 2000 for vectors to PUJIN, cross PUJIN at or above 4000, then on track 290° to cross HAWWC at or above 5000, thence . . . .

. . . . on (transition). Maintain 6000. Expect higher altitude 10 minutes after departure.

**IKAYE TRANSITION (HAWWC3.IKAYE)**

**TAKEOFF MINIMUMS**  
 Rwy 6: Standard with minimum climb of 280 feet per NM to 600.  
 Rwy 24: Standard.

NOTE: Chart not to scale.

SW-3, 16 JUN 2022 to 14 JUL 2022