

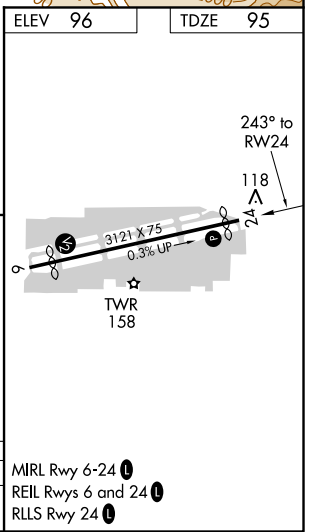
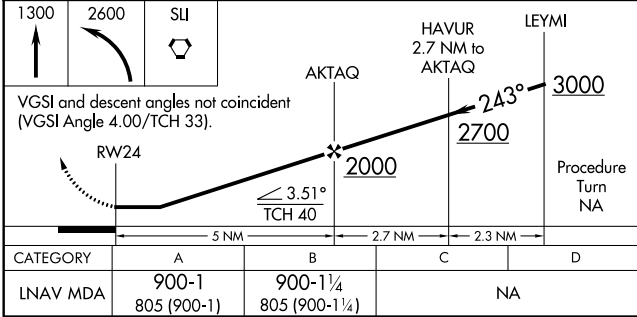
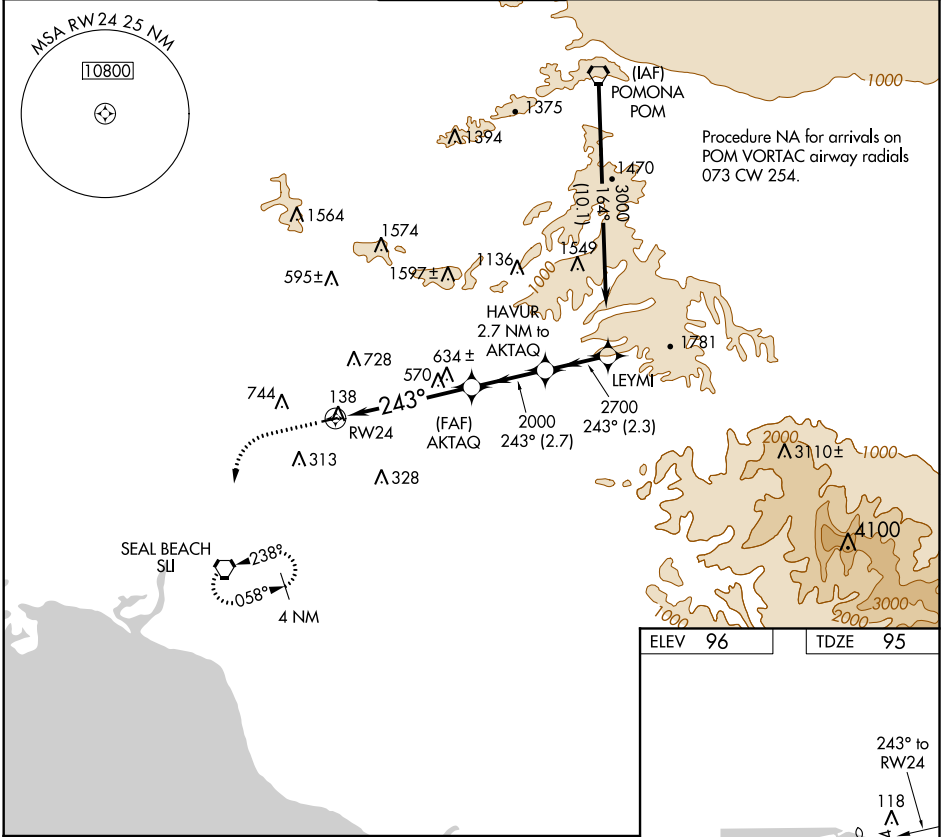
APP CRS	Rwy Idg	2868
243°	TDZE	95
	Apt Elev	96

RNAV (GPS) RWY 24

FULLERTON MUNI (F'UL)

RNP APCH.	Inoperative table does not apply. Helicopter visibility reduction below 1 SM NA.	MISSED APPROACH: Climb to 1300, then climbing left turn to 2600 direct SUI VORTAC and hold.
Inoperative table does not apply. Helicopter visibility reduction below 1 SM NA.		

ATIS 125.05	SOCAL APP CON 125.35 316.125	FULLERTON TOWER ★ 119.1 (CTAF) 0	GND CON 121.8	UNICOM 122.95
-----------------------	--	---	-------------------------	-------------------------



CATEGORY	A	B	C	D
LNAV MDA	900-1 805 (900-1)	900-1¼ 805 (900-1¼)		NA

FULLERTON, CALIFORNIA
Orig-C 18JUL19

33°52'N-117°59'W

FULLERTON MUNI (F'UL)
RNAV (GPS) RWY 24

SW-3, 16 JUN 2022 to 14 JUL 2022

SW-3, 16 JUN 2022 to 14 JUL 2022