

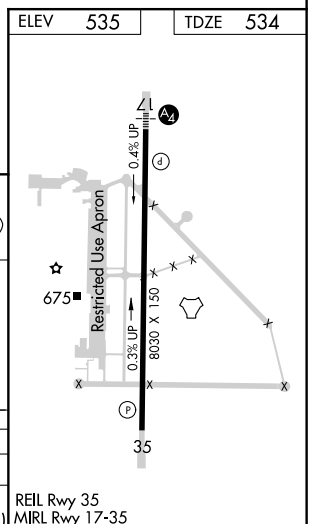
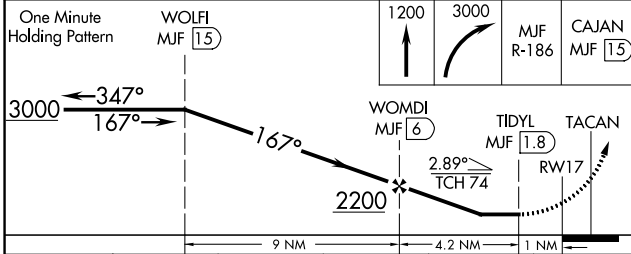
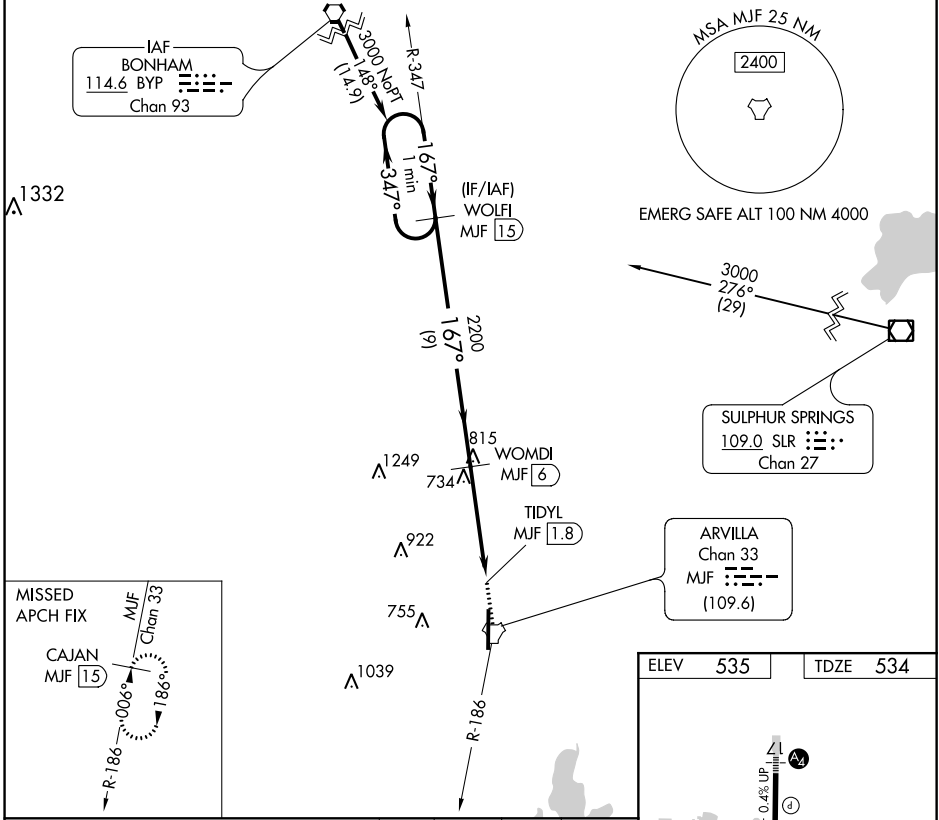
TACAN M/JF Chan 33 (109.6)	APP CRS 167°	Rwy Idg TDZE 534 Apt Elev 535	8030
--	------------------------	---	-------------

TACAN RWY 17

MAJORS (GVT)

<p>▼ Visibility reduction by helicopters NA. When local altimeter setting not received, use Terrell altimeter setting: increase all MDA 80 feet and visibility S-17 and Circling Cats C, D, and E ¼ SM. For inoperative MALSR, increase S-17 Cat E visibility ¼ mile.</p>	<p>MALS</p>	<p>MISSED APPROACH: Climb to 1200 then climbing right turn to 3000 on M/JF TACAN R-186 to CAJAN/M/JF 15 DME and hold.</p>
---	-------------	---

AWOS-3 133.425	FORT WORTH CENTER 132.025 360.75	MAJORS TOWER ★ 118.65 (CTAF) 385.425	GND CON 121.7 335.8	UNICOM 122.95
--------------------------	--	--	-------------------------------	-------------------------



CATEGORY	A	B	C	D	E
S-17	1060-1	526 (600-1)	1060-1¼	526 (600-1¼)	
CIRCLING	1060-1¼	525 (600-1¼)	1060-1½	1240-2¼	1300-2¾
			525 (600-1½)	705 (800-2¼)	765 (800-2¾)

SC-2, 16 JUN 2022 to 14 JUL 2022

SC-2, 16 JUN 2022 to 14 JUL 2022