

VOR/DME ELY 110.6 Chan 43	APP CRS 179°	Rwy Idg TDZE Apt Elev N/A N/A 6260
---	------------------------	--

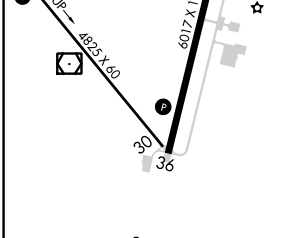
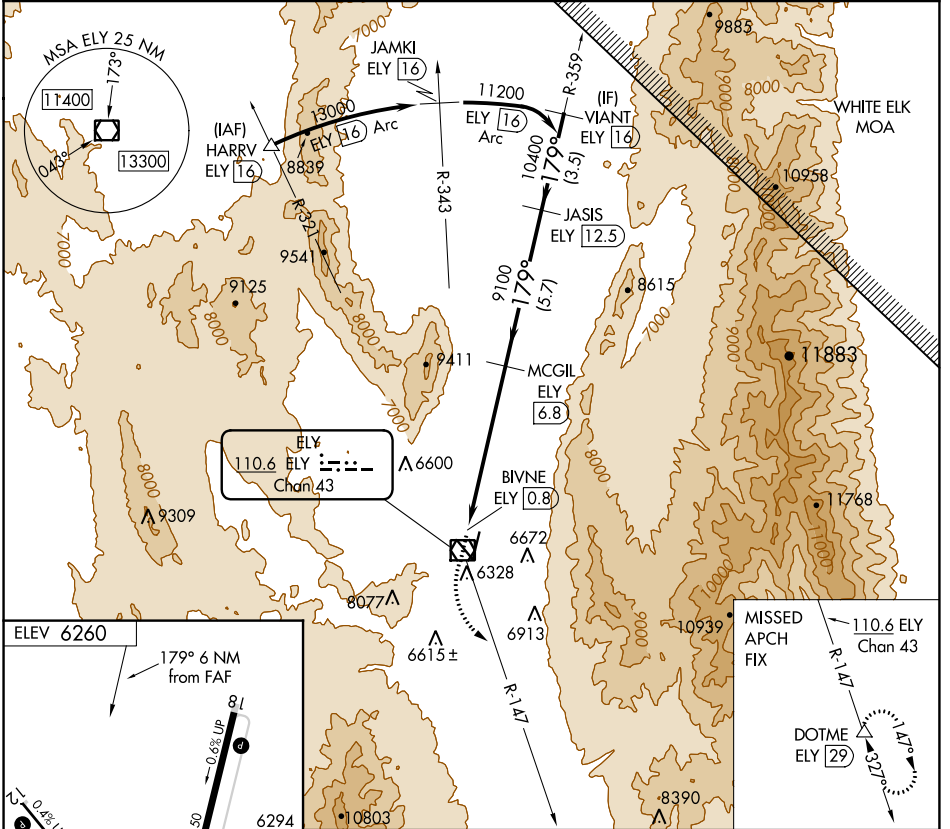
VOR-C
ELY/YELLAND FLD (ELY)

DME required.

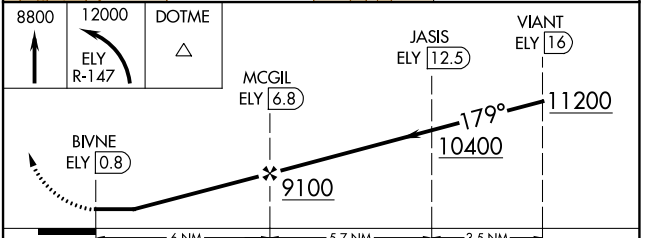
▼ Rwy 30 helicopter visibility reduction below 1 SM NA. Circling Rwy 30 NA at night. Circling NA for Cats A and B southwest of Rwy 12 and west of Rwy 36. Circling NA for Cats C and D southwest of Rwy 12 and east of Rwy 18.

MISSED APPROACH: Climb to 8800 then climbing left turn to 12000 on ELY VOR/DME R-147 to DOTME/ELY 29 DME and hold.

ASOS 120.625	SALT LAKE CENTER 133.45 317.625	UNICOM 122.8 (CTAF) 0
------------------------	---	---------------------------------



MIRL Rwy 12-30 **0**
HIRL Rwy 18-36 **0**
REIL Rwy 18 and 36 **0**



CATEGORY	A	B	C	D
C CIRCLING	8060-1¼ 1800 (1800-1¼)	8060-1½ 1800 (1800-1½)	8060-3 1800 (1800-3)	8220-3 1960 (2000-3)

SW-4, 16 JUN 2022 to 14 JUL 2022

SW-4, 16 JUN 2022 to 14 JUL 2022