

FORT RUCKER, ALABAMA

COPTER RNAV (GPS) RWY 17

AL-5183 [USA]

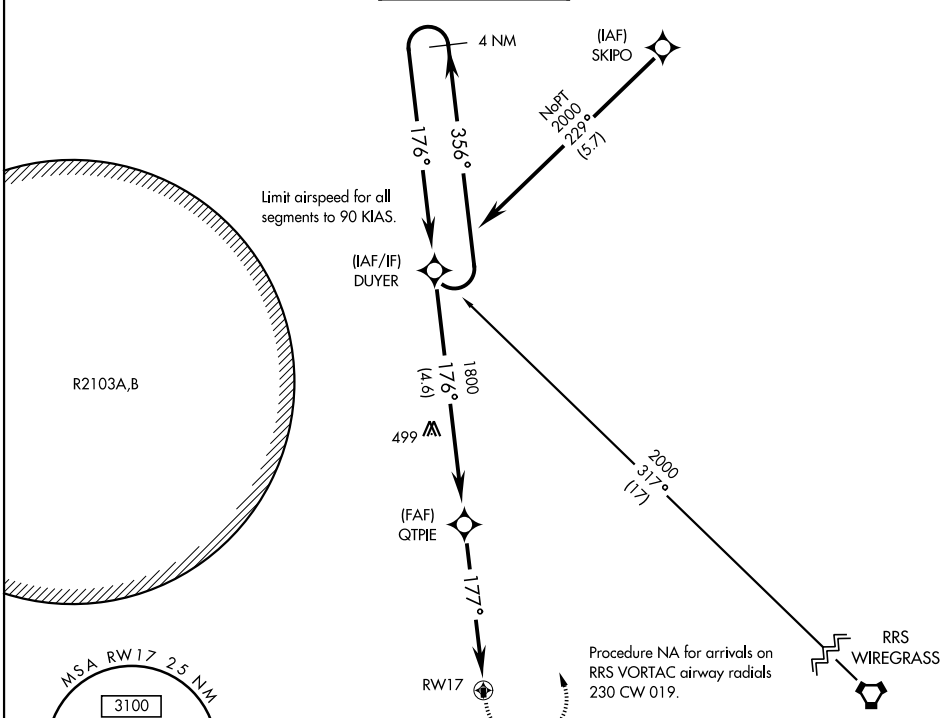
HANCHEY AHP (STRIP) (KHEY)

APCH CRS	Rwy Idg	476
176°	TDZE	318
	Arprt Elev	318

NA DME/DME RNP-0.3 NA.
 Use CAIRNS altimeter setting, when not received, use LOWE altimeter setting.

MISSED APPROACH: Climbing left turn to 2000 direct DUYER and hold.

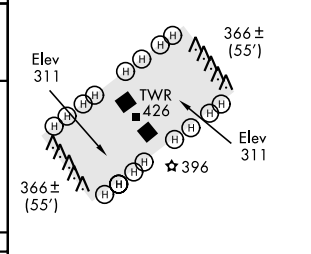
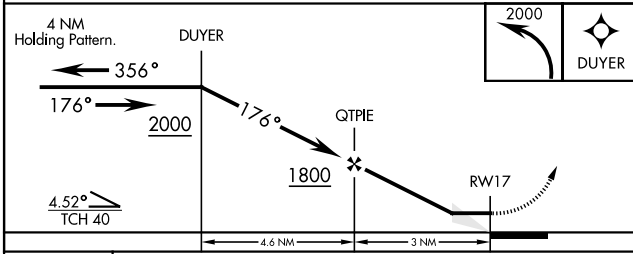
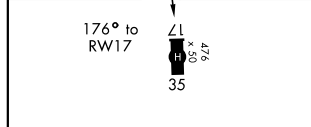
ATIS ★ 141.375	CAIRNS APP CON 125.4 327.125	TOWER ★ 140.5 387.85	GND CON 142.55 225.575	CAIRNS CLNC DEL 118.075 380.1
--------------------------	--	--------------------------------	----------------------------------	---



SE-4, 16 JUN 2022 to 14 JUL 2022

SE-4, 16 JUN 2022 to 14 JUL 2022

ELEV 318	TDZE 318
----------	----------



CATEGORY	COPTER	
LNAV MDA	900-½	582 (600-½)

FORT RUCKER, ALABAMA

31° 21' N-85° 39' W

HANCHEY AHP (STRIP) (KHEY)

Amdt 2 19JUL18

COPTER RNAV (GPS) RWY 17