

# ILS or LOC RWY 26L

GERALD R FORD INTL (G.R.R.)


LOC I-GRR <b>109.7</b>	APP CRS <b>267°</b>	Rwy Idg <b>10001</b>
		TDZE <b>790</b>
		Apt Elev <b>794</b>

**ASR**

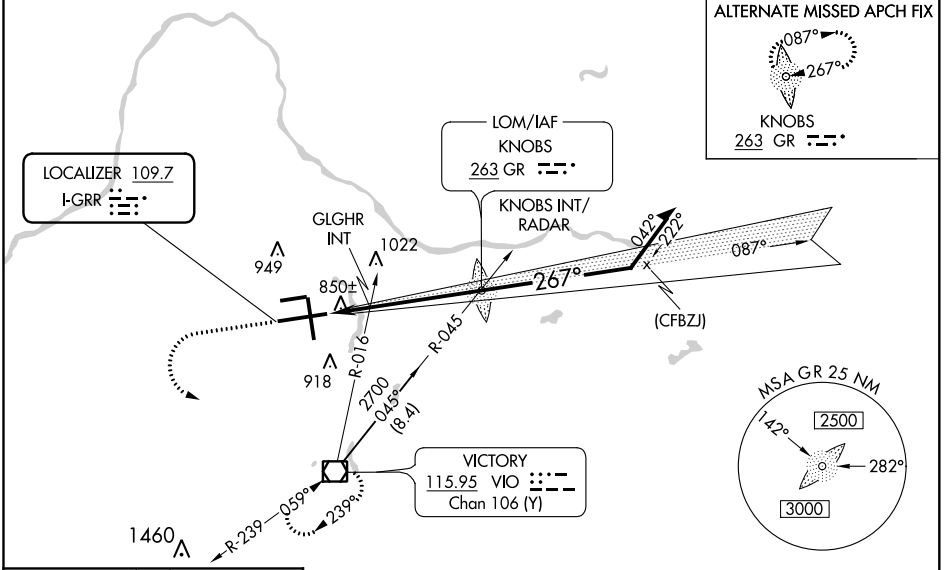
For inop MALSRS when using GLGHR INT minimums, increase S-LOC 26L Cat D visibility to RVR 5000. For inop MALSRS when using Holland altimeter setting, increase S-ILS 26L all Cats visibility to RVR 5000.  
 \*\*RVR 1800 authorized with the use of FD or AP or HUD to DA.

**MALSRS**

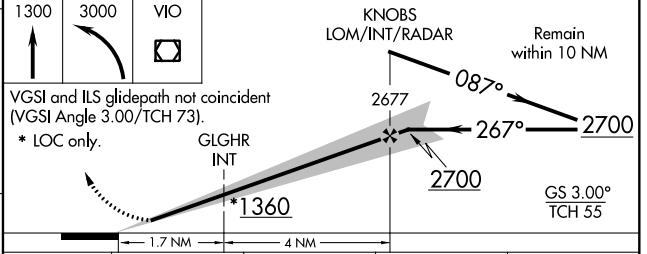
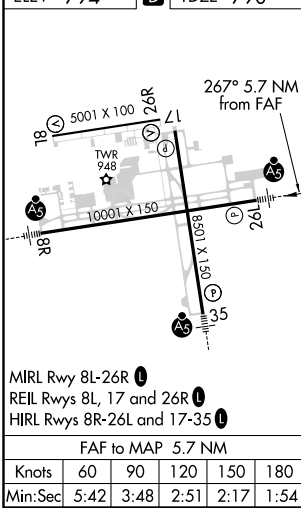
**MISSED APPROACH:**  
 Climb to 1300 then climbing left turn to 3000 direct VIO VOR/DME and hold.



ATIS <b>118.725</b>	GREAT LAKES APP CON ★ <b>128.4 257.6</b>	GRAND RAPIDS TOWER ★ <b>135.65 (CTAF) 0 339.8</b>	GND CON <b>121.8</b>	CLNC DEL <b>119.3</b>	UNICOM <b>122.95</b>
------------------------	---	--	-------------------------	--------------------------	-------------------------



ELEV 794 **D** TDZE 790



CATEGORY	A	B	C	D
S-ILS 26L**	990/24 200 (200-½)			
S-LOC 26L	1360/24	570 (600-½)	1360/50 570 (600-1)	1360/60 570 (600-1½)
<b>C</b> CIRCLING	1360-1	566 (600-1)	1360-1½ 566 (600-1½)	1360-2 566 (600-2)
GLGHR INT MINIMUMS (DUAL VOR RECEIVERS REQUIRED)				
S-LOC 26L	1120/24 330 (400-½)		1120/40 330 (400-¾)	
<b>C</b> CIRCLING	1260-1	466 (500-1)	1340-1½ 546 (600-1½)	1360-2 566 (600-2)

EC-1, 16 JUN 2022 to 14 JUL 2022

EC-1, 16 JUN 2022 to 14 JUL 2022