

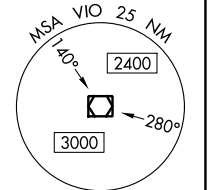
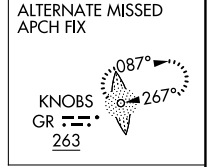
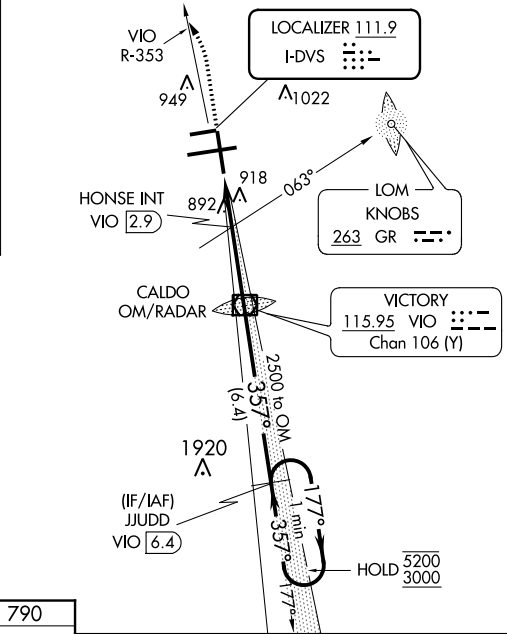
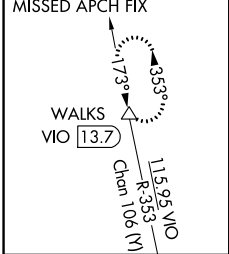
LOC I-DVS <b>111.9</b>	APP CRS <b>357°</b>	Rwy Idg TDZE Apt Elev	<b>8501</b> <b>790</b> <b>794</b>
---------------------------	------------------------	-----------------------------	---

# ILS or LOC RWY 35

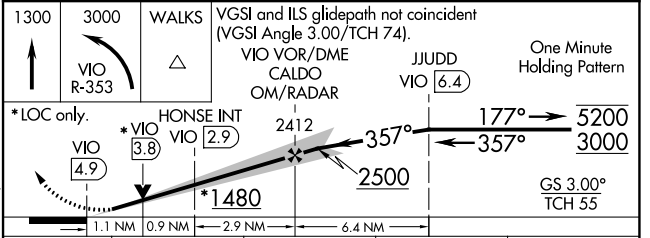
GERALD R FORD INTL (G.R.R.)

DME required. DME or RADAR required for procedure entry.		MALSR	MISSED APPROACH: Climb to 1300 then climbing left turn to 3000 on VJO VOR/DME R-353 to WALKS 13.7 DME and hold.
<p><b>▲</b> HONSE fix minimums: for inop ALS, increase Cat C and D visibility to RVR 6000.</p> <p>ASR <b>** RVR 1800 authorized with use of FD or AP or HUD to DA.</b></p>			

ATIS <b>118.725</b>	GREAT LAKES APP CON * <b>128.4 257.6</b>	GRAND RAPIDS TOWER * <b>135.65 (CTAF) 0 339.8</b>	GND CON <b>121.8</b>	CLNC DEL <b>119.3</b>	UNICOM <b>122.95</b>
------------------------	---	--	-------------------------	--------------------------	-------------------------



ELEV 794	<b>D</b>	TDZE 790			
MIRL Rwy 8L-26R	REIL Rwys 8L, 17 and 26R	HIRL Rwys 8R-26L and 17-35			
FAF to MAP 4.9 NM					
Knots	60	90	120	150	180
Min:Sec	4:54	3:16	2:27	1:58	1:38



CATEGORY	A	B	C	D
S-ILS 35**	990/24 200 (200-½)			
S-LOC 35	1480/24	690 (700-½)	1480-1½	690 (700-1½)
<b>C</b> CIRCLING	1480-1	686 (700-1)	1480-2	686 (700-2)
HONSE MINIMUMS (ADF OR DME REQUIRED)				
S-LOC 35	1200/24	410 (500-½)	1200/40	410 (500-¾)
<b>C</b> CIRCLING	1260-1	466 (500-1)	1340-1½	546 (600-1½)
			566 (600-2)	

EC-1, 16 JUN 2022 to 14 JUL 2022

EC-1, 16 JUN 2022 to 14 JUL 2022