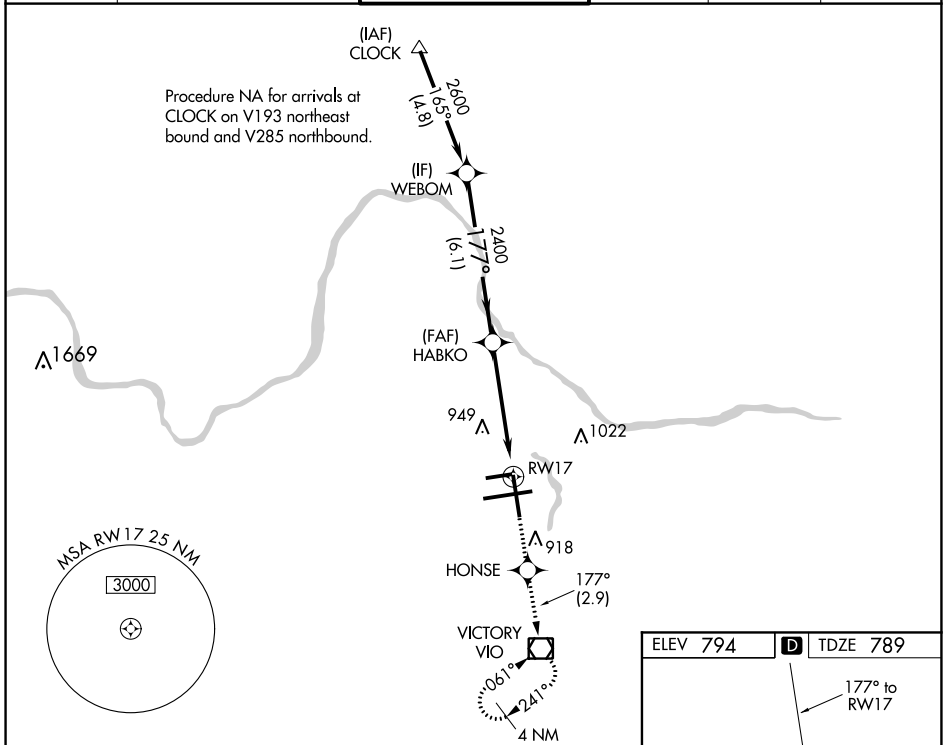


|  |                        |   |
|--|------------------------|---|
| WAAS<br>CH <b>93912</b><br><b>W17A</b> | APP CRS<br><b>177°</b> | Rwy Idg <b>8501</b><br>TDZE <b>789</b><br>Apt Elev <b>794</b> |
|--|------------------------|---|

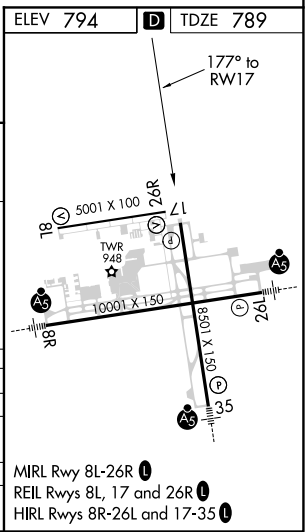
# RNAV (GPS) RWY 17

GERALD R FORD INTL (G.R.)

|  |   |  |                         |                          |                         |
|--|---|--|-------------------------|--------------------------|-------------------------|
| RNP APCH.  |   | MISSED APPROACH: Climb to 3000 direct HONSE and on track 177° to VJO VOR/DME and hold, continue climb-in-hold to 3000. |                         |                          |                         |
| <p>▼ For uncompensated Baro-VNAV systems, LNAV/VNAV NA below -16°C or above 54°C. Rwy 17 helicopter visibility reduction below ¾ SM NA.</p> <p>ASR</p> |   |  |                         |                          |                         |
| ATIS<br><b>118.725</b>   | GREAT LAKES APP CON ★<br><b>128.4 257.6</b> | GRAND RAPIDS TOWER ★<br><b>135.65 (CTAF) 339.8</b>   | GND CON<br><b>121.8</b> | CLNC DEL<br><b>119.3</b> | UNICOM<br><b>122.95</b> |



|  |         |             |              |              |             |
|--|---------|-------------|--------------|--------------|-------------|
| VGSI and RNAV glidepath not coincident WEBOM (VGSI Angle 3.00/TCH 50).   |         | 3000        | HONSE        | tr 177°      | VIO         |
| <p>2600</p> <p>177°</p> <p>HABKO 2400</p> <p>2400</p> <p>1.2 NM to RWY 17</p> <p>RWY 17</p> <p>4 NM</p> <p>*INAV only.</p> |         |             |              |              |             |
| GP 3.00° TCH 50  |         | 6.1 NM      | 3.7 NM       | 1.2          |             |
| CATEGORY   | A       | B           | C            | D            |             |
| LPV DA   |         | 1108/50     | 319 (400-1)  |              |             |
| LNAV/VNAV DA   |         | 1259-1¾     | 470 (500-1¾) |              |             |
| LNAV MDA   | 1200/55 | 411 (500-1) | 1200-1¼      | 411 (500-1¼) |             |
| CIRCLING   | 1260-1  | 466 (500-1) | 1340-1½      | 1360-2       | 566 (600-2) |



EC-1, 16 JUN 2022 to 14 JUL 2022

EC-1, 16 JUN 2022 to 14 JUL 2022