

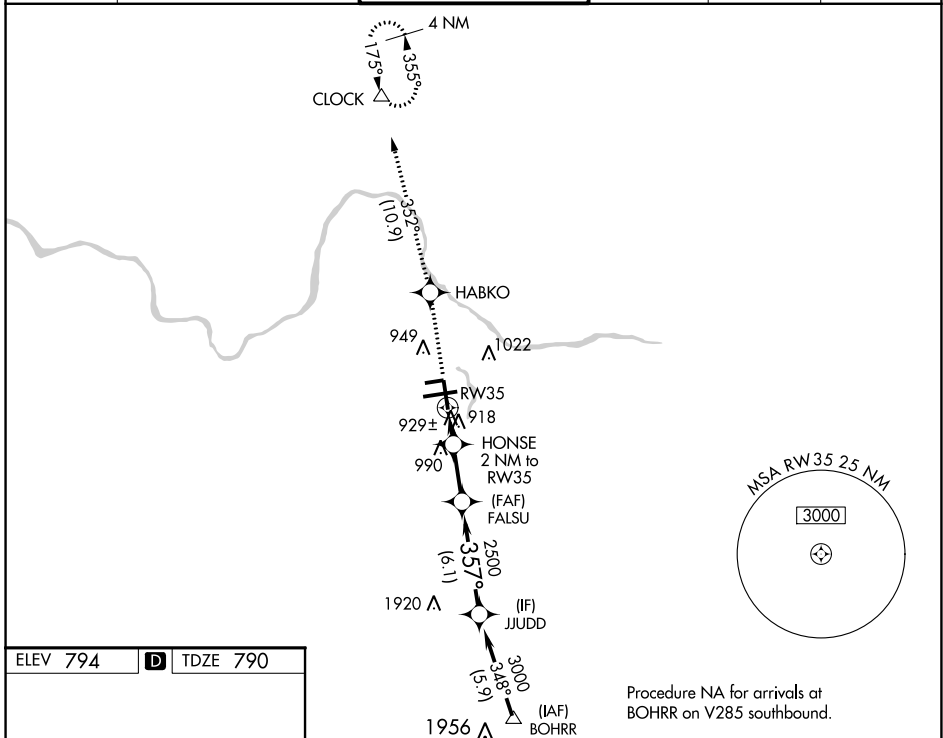
WAAS CH 87112 W35A	APP CRS 357°	Rwy Idg 8501 TDZE 790 Apt Elev 794
----------------------------------------	------------------------	---------------------------------------------------------------

RNAV (GPS) RWY 35

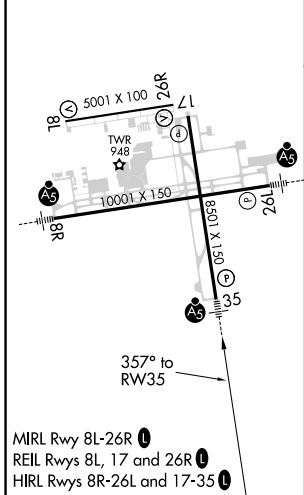
GERALD R FORD INTL (G.R.R.)

RNP APCH.	MALSR	MISSED APPROACH: Climb to 3000 direct HABKO and track 352° to CLOCK and hold.
ASR	AS	For uncompensated Baro-VNAV systems, LNAV/VNAV NA below -16°C or above 54°C. For inop ALS, increase LNAV Cat D visibility to RVR 6000. ** RVR 1800 authorized with use of FD or AP or HUD to DA.

ATIS 118.725	GREAT LAKES APP CON * 128.4 257.6	GRAND RAPIDS TOWER * 135.65 (CTAF) 0 339.8	GND CON 121.8	CLNC DEL 119.3	UNICOM 122.95
------------------------	---------------------------------------------	------------------------------------------------------	-------------------------	--------------------------	-------------------------



ELEV 794	D	TDZE 790
----------	----------	----------



MIRL Rwy 8L-26R **L**
REIL Rwy 8L, 17 and 26R **L**
HIRL Rwy 8R-26L and 17-35 **L**

3000	HABKO	CLOCK	VGSi and RNAV glidepath not coincident (VGSi Angle 3.00/TCH 74).	
↑	✧	△	JUDD	
* LNAV only.	HONSE 2 NM to RW35	FALSU 2500	3000	
	* 1 NM to RW35		357°	
	*1480		2500	
	1 NM	3.1 NM	6.1 NM	
CATEGORY	A	B	C	D
LPV DA**	990/24 200 (200-½)			
LNAV/VNAV DA	1236/50 446 (500-1)			
LNAV MDA	1180/24	390 (400-½)	1180/35 390 (400-¾)	1180/50 390 (400-1)
C CIRCLING	1260-1	466 (500-1)	1340-1½ 546 (600-1½)	1360-2 566 (600-2)

EC-1, 16 JUN 2022 to 14 JUL 2022

EC-1, 16 JUN 2022 to 14 JUL 2022