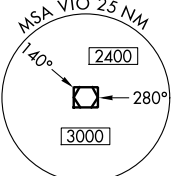
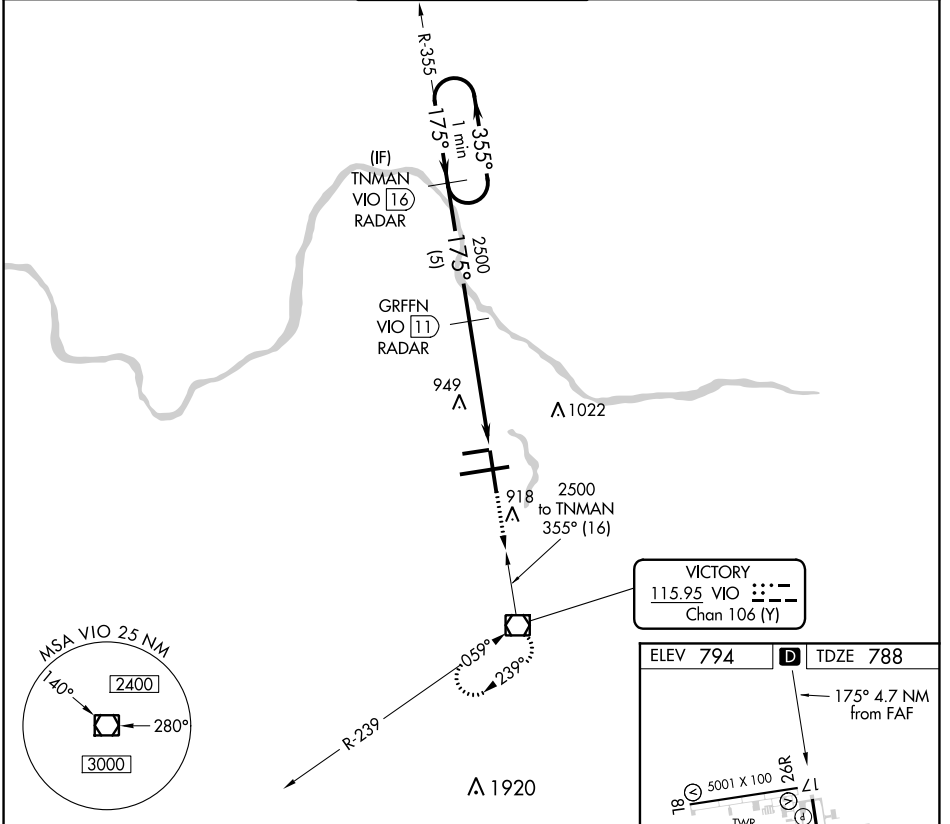


VOR/DME VIO	APP CRS	Rwy Idg	8501
115.95	175°	TDZE	788
Chan 106 (Y)		Apt Elev	794

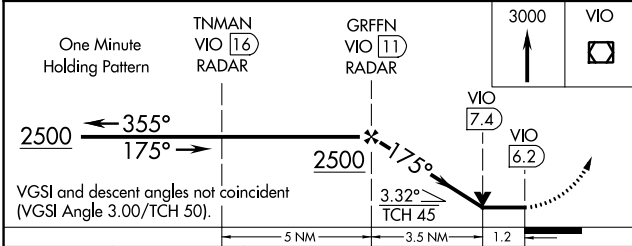
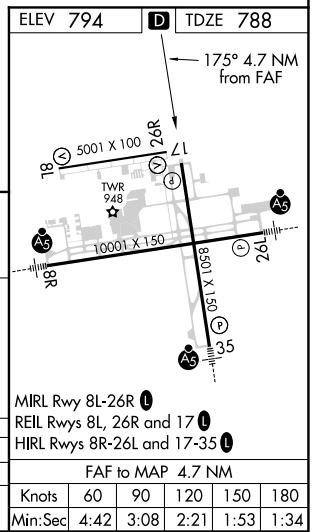
VOR RWY 17

GERALD R FORD INTL (G.R.)

DME or RADAR required.		MISSED APPROACH: Climb to 3000 direct VIO VOR/DME and hold.			
<p>⚠ When local altimeter setting not received, use Holland altimeter setting and increase all MDA's 80 feet and increase S-17 Cat D visibility ¼ SM. Rwy 17 helicopter visibility reduction below ¼ SM NA.</p>					
ATIS	GREAT LAKES APP CON *	GRAND RAPIDS TOWER *	GND CON	CLNC DEL	UNICOM
118.725	128.4 257.6	135.65 (CTAF) 0 339.8	121.8	119.3	122.95



VICTORY
115.95 VIO
Chan 106 (Y)



CATEGORY	A	B	C	D
S-17	1200-1	412 (500-1)	1200-1¼	412 (500-1¼)
Ⓞ CIRCLING	1280-1	486 (500-1)	1340-1½	1360-2
			546 (600-1½)	566 (600-2)

EC-1, 16 JUN 2022 to 14 JUL 2022

EC-1, 16 JUN 2022 to 14 JUL 2022