

JOE POOL FIVE DEPARTURE

CLNC DEL
121.875
CLNC DEL (when twr closed)
118.85
GND CON
121.875
ARLINGTON TOWER ★
128.625 (CTAF)
REGIONAL DEP CON
135.975 379.9

TAKEOFF MINIMUMS
Rwys 16, 34: Standard.

MAVERICK
113.1 TTT
Chan 78
N32°52.15'
W97°02.43'

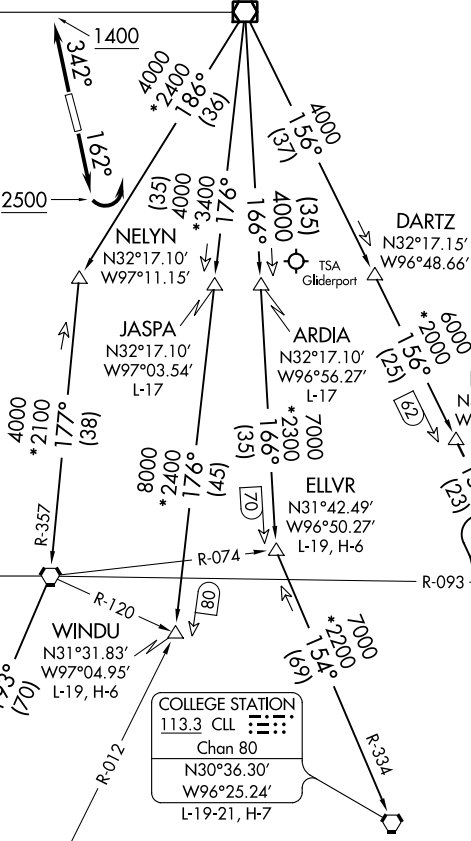
WACO
115.3 ACT
Chan 100
N31°39.73'
W97°16.14'
L-19, H-6

HOARY
N30°34.63'
W97°46.52'
L-19-21, H-7

CENTEX
112.8 CWK
Chan 75

SAN ANTONIO
116.8 SAT
Chan 115
N29°38.64'-W98°27.68'
L-19, H-7

COLLEGE STATION
113.3 CLL
Chan 80
N30°36.30'
W96°25.24'
L-19-21, H-7



NOTE: RADAR and DME required.

(NARRATIVE ON FOLLOWING PAGE)
(NOTES CONTINUED ON FOLLOWING PAGE)

NOTE: Chart not to scale.

JOE POOL FIVE DEPARTURE

SC-2, 16 JUN 2022 to 14 JUL 2022

SC-2, 16 JUN 2022 to 14 JUL 2022

JOE POOL FIVE DEPARTURE



DEPARTURE ROUTE DESCRIPTION

TAKEOFF RUNWAY 16: Climb on heading 162° to 2500 before turning left.

TAKEOFF RUNWAY 34: Climb on heading 342° to 1400 before turning southeast bound.

When entering controlled airspace, fly assigned heading and altitude, for vector to appropriate route.

ARDIA TRANSITION (JPOOL5.ARDIA): From over TTT VOR/DME on TTT R-166 to ARDIA.

BILEE TRANSITION (JPOOL5.BILEE): From over TTT VOR/DME on TTT R-156 to TORNN, then on TNV R-334 to BILEE.

BRDEN TRANSITION (JPOOL5.BRDEN): From over TTT VOR/DME on TTT R-156 to BRDEN.

COLLEGE STATION TRANSITION (JPOOL5.CLL): From over TTT VOR/DME on TTT R-166 to ELLVR, then on CLL R-334 to CLL VORTAC.

ELLVR TRANSITION (JPOOL5.ELLVR): From over TTT VOR/DME on TTT R-166 to ELLVR.

HOARY TRANSITION (JPOOL5.HOARY): From over TTT VOR/DME on TTT R-186 to NELYN, then on ACT R-357 to ACT VORTAC, then on ACT R-193 to HOARY.

JASPA TRANSITION (JPOOL5.JASPA): From over TTT VOR/DME on TTT R-176 to JASPA.

SAN ANTONIO TRANSITION (JPOOL5.SAT): From over TTT VOR/DME on TTT R-186 to NELYN, then on ACT R-357 to ACT VORTAC, then on ACT R-193 to HOARY, then on SAT R-024 to SAT VORTAC.

TORNN TRANSITION (JPOOL5.TORNN): From over TTT VOR/DME on TTT R-156 to TORNN.

WACO TRANSITION (JPOOL5.ACT): From over TTT VOR/DME on TTT R-186 to NELYN, then on ACT R-357 to ACT VORTAC.

WINDU TRANSITION (JPOOL5.WINDU): From over TTT VOR/DME on TTT R-176 to WINDU.

NOTE: ARDIA Transition: ATC assigned.

NOTE: BRDEN Transition: ATC assigned.

NOTE: BILEE Transition: For non GPS or DME/DME/IRU equipped aircraft overflying BILEE INT then on the appropriate STAR to IAH, CXO, or DWH. Also for aircraft overflying BILEE INT on J87 to TNV VOR/DME.

NOTE: COLLEGE STATION Transition: For piston and turboprop aircraft destined to HOU, EFD, GLS, or LBX. Also for all other aircraft types destined to all other Houston terminal area airports except IAH, CXO, or DWH.

NOTE: ELLVR Transition: For turbojet aircraft destined to HOU, EFD, GLS, or LBX.

NOTE: JASPA Transition: ATC assigned.

NOTE: SAN ANTONIO Transition: For aircraft overflying Centex and San Antonio.

NOTE: TORNN Transition: For GPS or DME/DME/IRU equipped aircraft overflying TORNN INT then on the appropriate RNAV STAR to IAH, CXO, or DWH. Also for aircraft landing in the Lafayette, Lake Charles, or Beaumont/Port Arthur terminal areas.

NOTE: WACO Transition: For aircraft inbound to Waco or Gray terminal area airports.

NOTE: WINDU Transition: For aircraft inbound to Austin or San Antonio terminal airports, aircraft should file and/or expect the BLEWE or MARCS arrival at WINDU.

SC-2, 16 JUN 2022 to 14 JUL 2022

SC-2, 16 JUN 2022 to 14 JUL 2022