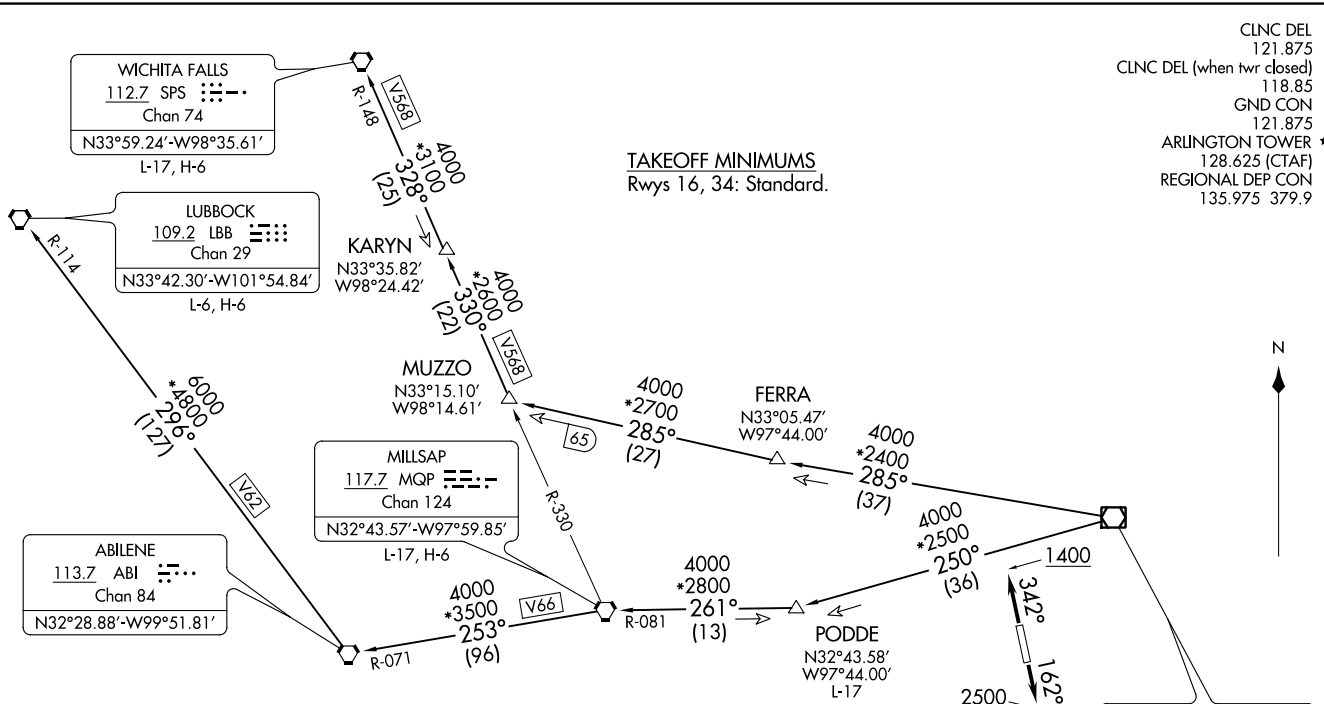


CLNC DEL 121.875
 CLNC DEL (when twr closed) 118.85
 GND CON 121.875
 ARLINGTON TOWER * 128.625 (CTAF)
 REGIONAL DEP CON 135.975 379.9

TAKEOFF MINIMUMS
 Rws 16, 34: Standard.



- NOTE: LUBBOCK Transition: For all aircraft overflying the MQP VORTAC westbound or direct.
- NOTE: MILLSAP Transition: For all aircraft overflying the MQP VORTAC westbound or direct.
- NOTE: PODDE Transition: ATC assigned.
- NOTE: WICHITA FALLS Transition: For all aircraft landing within the Wichita Falls terminal area or overflying the SPS VORTAC.
- NOTE: RADAR and DME required.
- NOTE: For all aircraft requesting 17000 and below.

NOTE: Chart not to scale.

(NARRATIVE ON FOLLOWING PAGE)

KINGDOM THREE DEPARTURE



DEPARTURE ROUTE DESCRIPTION

TAKEOFF RUNWAY 16: Climb on heading 162° to 2500 before turning left, thence. . . .

TAKEOFF RUNWAY 34: Climb on heading 342° to 1400 before turning southeast bound, thence. . . .

. . . .fly assigned heading and altitude, for vector to appropriate route.

LUBBOCK TRANSITION (KING3.LBB): From over TTT VOR/DME on TTT R-250 to PODDE, then on MQP R-081 to MQP VORTAC, then on MQP R-253 and ABI R-071 to ABI VORTAC, then on ABI R-296 and LBB R-114 to LBB VORTAC.

MILLSAP TRANSITION (KING3.MQP): From over TTT VOR/DME on TTT R-250 to PODDE, then on MQP R-081 to MQP VORTAC.

PODDE TRANSITION (KING3.PODDE): From over TTT VOR/DME on TTT R-250 to PODDE.

WICHITA FALLS TRANSITION (KING3.SPS): From over TTT VOR/DME on TTT R-285 to MUZZO, then on MQP R-330 and SPS R-148 to KARYN, then on SPS R-148 to SPS VORTAC.

SC-2, 16 JUN 2022 to 14 JUL 2022

SC-2, 16 JUN 2022 to 14 JUL 2022