

**TOP ALTITUDE:
ASSIGNED BY ATC**

TAKEOFF MINIMUMS
Rwys 16, 34: Standard.

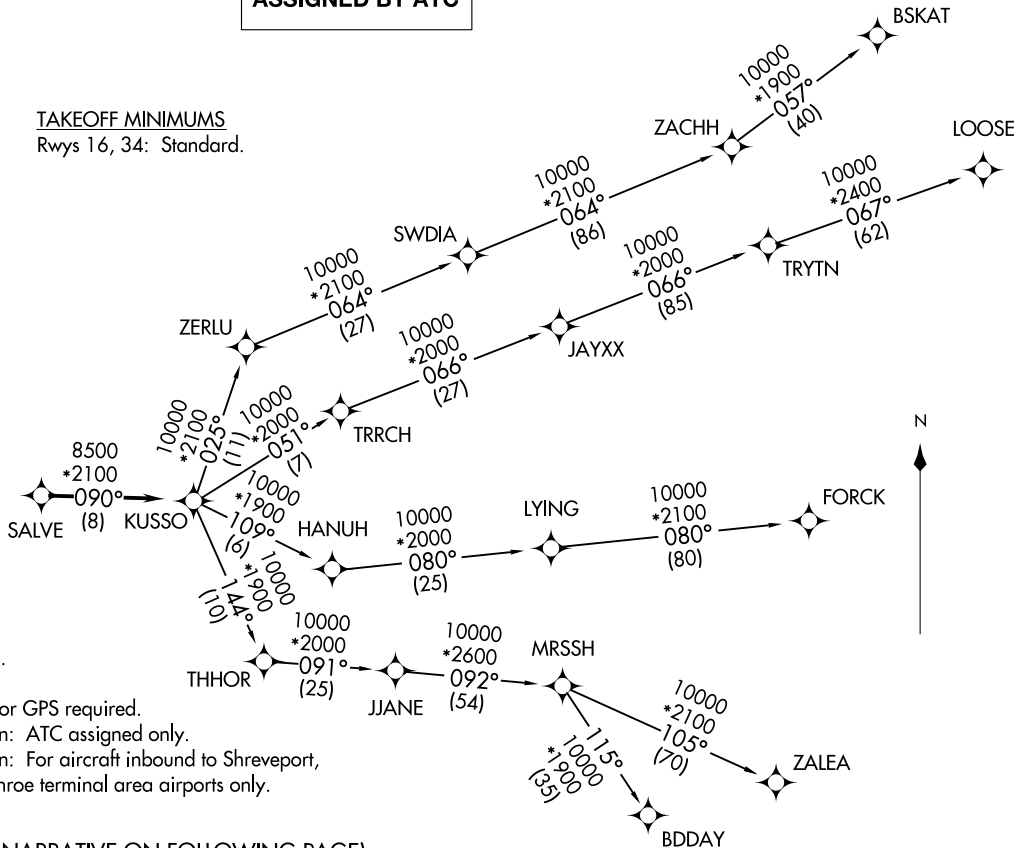
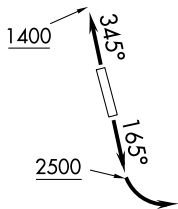
CLNC DEL
121.875
CLNC DEL (when twr closed)
118.85
GND CON
121.875
ARLINGTON TOWER *
128.625 (CTAF)
REGIONAL DEP CON
135.975 379.9

KUSSO ONE DEPARTURE (RNAV)
(KUSSO1 .KUSSO) 24MAR22

KUSSO ONE DEPARTURE (RNAV)
(KUSSO1 .KUSSO) 22083

AL-5189 (FAA)

ARLINGTON MUNI (GKY)
ARLINGTON, TEXAS



- NOTE: RADAR required.
- NOTE: RNAV 1.
- NOTE: DME/DME/IRU or GPS required.
- NOTE: BDDAY Transition: ATC assigned only.
- NOTE: MRSSH Transition: For aircraft inbound to Shreveport, Jackson and Monroe terminal area airports only.

(NARRATIVE ON FOLLOWING PAGE)

NOTE: Chart not to scale.

ARLINGTON, TEXAS
ARLINGTON MUNI (GKY)

KUSSO ONE DEPARTURE (RNAV)



DEPARTURE ROUTE DESCRIPTION

TAKEOFF RUNWAY 16: Climb on heading 165° to 2500 before turning left.

TAKEOFF RUNWAY 34: Climb on heading 345° to 1400 before turning southeast bound.

When entering controlled airspace, fly heading assigned by ATC, expect vector to SALVE, then on track 090° to KUSSO, then on assigned transition. Maintain ATC assigned altitude, expect filed altitude 10 minutes after departure.

BDDAY TRANSITION (KUSSO1.BDDAY)

BSKAT TRANSITION (KUSSO1.BSKAT)

FORCK TRANSITION (KUSSO1.FORCK)

LOOSE TRANSITION (KUSSO1.LOOSE)

MRSSH TRANSITION (KUSSO1.MRSSH)

ZALEA TRANSITION (KUSSO1.ZALEA)

SC-2, 16 JUN 2022 to 14 JUL 2022

SC-2, 16 JUN 2022 to 14 JUL 2022