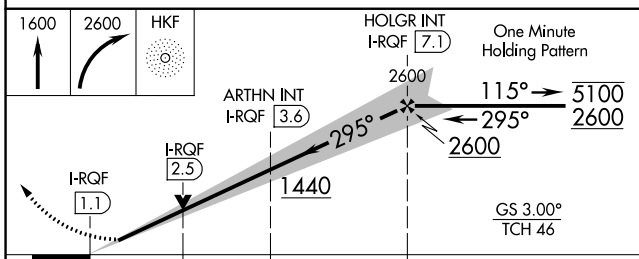
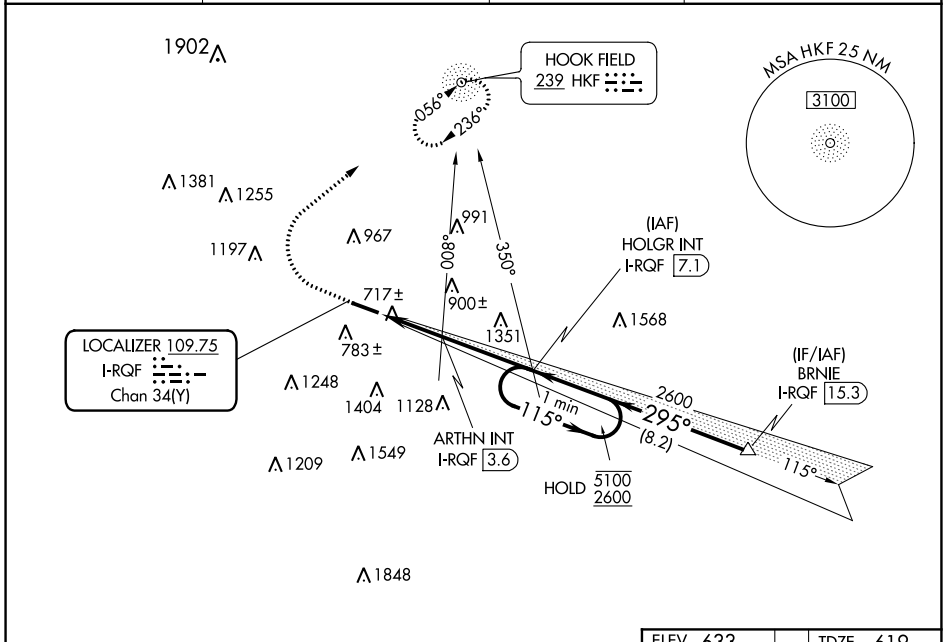


LOC/DME I-RQF 109.75 Chan 34 (Y)	APP CRS 295°	Rwy Idg 5500 TDZE 619 Apt Elev 633
--	------------------------	---

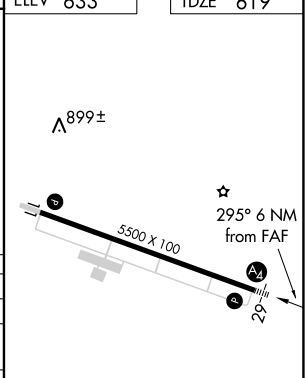
ILS or LOC RWY 29
BUTLER COUNTY RGNL-HOGAN FLD (H.A.O)

ADF required. DME required for LOC only.	MALS ≡	MISSED APPROACH: Climb to 1600 then climbing right turn to 2600 direct HKF NDB and hold.
<p>▼ Inop table does not apply to S-ILS 29. For inop ALS, increase S-LOC-29 Cats C and D visibility to 2½ SM; ARTHN fix minimums: for inop ALS, increase S-LOC 29 Cats C and D visibility to 1¾ SM.</p> <p>▲</p>		

ASOS 121.425	CINCINNATI APP CON 121.0 254.25	CLNC DEL 126.25	UNICOM 123.05 (CTAF) 0
------------------------	---	---------------------------	----------------------------------



ELEV 633	TDZE 619
----------	----------



CATEGORY	A	B	C	D
S-ILS 29	819-¾		200 (200-¾)	
S-LOC 29	1440-¾ 821 (900-¾)	1440-1 821 (900-1)	1440-2	821 (900-2)
CIRCLING	1440-1 807 (900-1)	1440-1¼ 807 (900-1¼)	1440-2½ 807 (900-2½)	1760-3 1127 (1200-3)
ARTHN FIX MINIMUMS				
S-LOC 29	1120-¾	501 (500-¾)	1120-1¼	501 (500-1¼)
CIRCLING	1180-1 547 (600-1)	1260-1 627 (700-1)	1320-2 687 (700-2)	1760-3 1127 (1200-3)

MIRA Rwy 11-29 0	FAF to MAP 6 NM					
REIL Rwy 11 and 29 0	Knots	60	90	120	150	180
	Min:Sec	6:00	4:00	3:00	2:24	2:00

EC-2, 16 JUN 2022 to 14 JUL 2022

EC-2, 16 JUN 2022 to 14 JUL 2022