

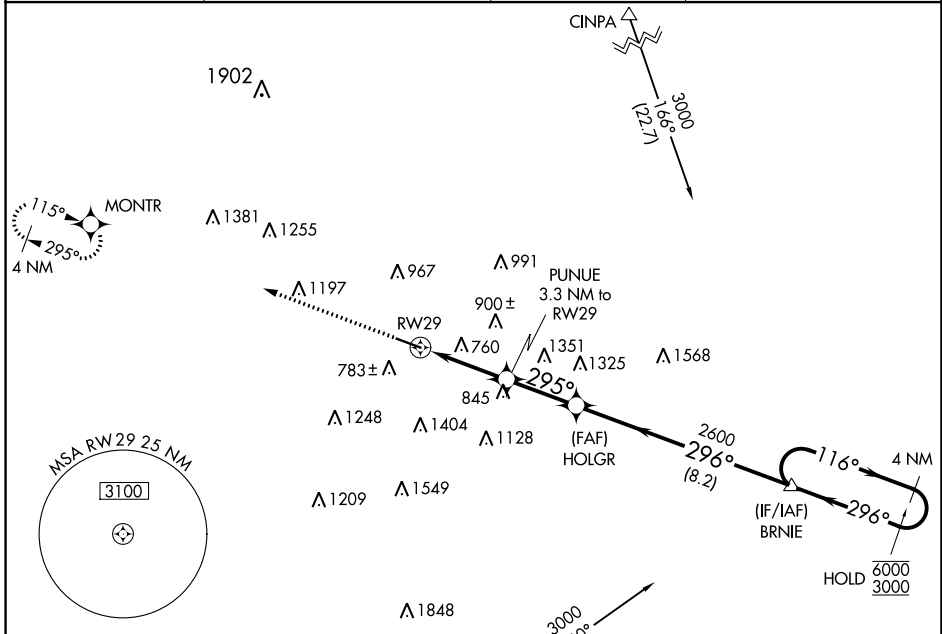
WAAS CH <b>61300</b> <b>W29A</b>	APP CRS <b>295°</b>	Rwy Idg TDZE Apt Elev	<b>5500</b> <b>619</b> <b>633</b>
--	------------------------	-----------------------------	---

# RNAV (GPS) RWY 29

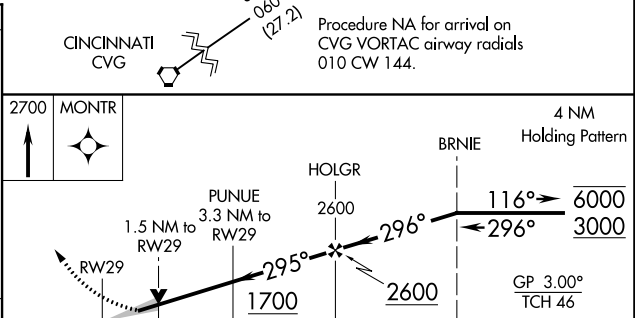
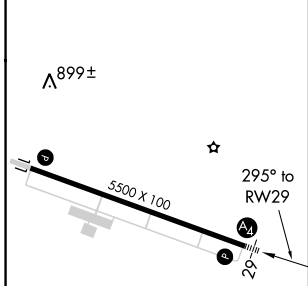
BUTLER COUNTY RGNL/HOGAN FLD (HAO)

RNP APCH - GPS.			MALS	MISSED APPROACH: Climb to 2700 direct MONTR and hold.
<p><b>⚠</b> For uncompensated Baro-VNAV systems, LNAV/VNAV NA below -18°C or above 54°C. For inop ALS, increase LNAV/VNAV visibilities to 1 1/8 SM.</p>				

ASOS <b>121.425</b>	CINCINNATI APP CON <b>121.0 254.25</b>	CLNC DEL <b>126.25</b>	UNICOM <b>123.05 (CTAF) 1</b>
------------------------	---	---------------------------	----------------------------------



ELEV <b>633</b>	TDZE <b>619</b>
-----------------	-----------------



CATEGORY	A	B	C	D
LPV DA		944-3/4	325 (400-3/4)	
LNAV/VNAV DA		1128-1 1/4	509 (500-1 1/4)	
LNAV MDA	1140-3/4	521 (600-3/4)	1140-1 1/4	521 (600-1 1/4)
<b>C</b> CIRCLING	1180-1 547 (600-1)	1260-1 627 (700-1)	1320-2 687 (700-2)	1760-3 1127 (1200-3)

MIRL Rwy 11-29 1  
REIL Rwy 11 and 29 1

EC-2, 16 JUN 2022 to 14 JUL 2022

EC-2, 16 JUN 2022 to 14 JUL 2022