

VOR/DME EWO <b>110.8</b> Chan <b>45</b>	APP CRS <b>132°</b>	Rwy Idg TDZE Apt Elev <b>N/A</b> <b>N/A</b> <b>921</b>
---	------------------------	---

**VOR/DME-A**  
TAYLOR COUNTY (AAS)

**NA** When local altimeter setting not received, use Somerset altimeter setting: increase all MDA 100 feet; increase Cat C visibility 1/4 mile and Cat D visibility 1/2 mile.

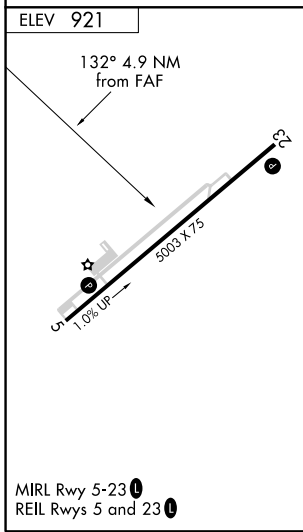
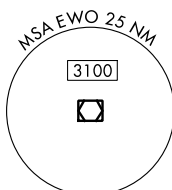
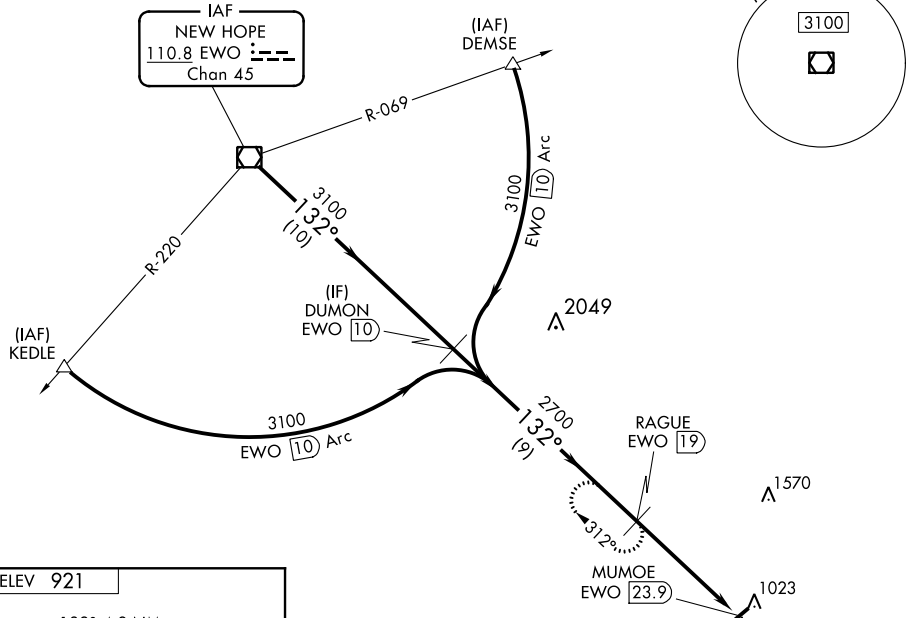
**MISSED APPROACH:** Climbing right turn to 3100 on heading 360° and on EWO R-132 to RAGUE/19 DME and hold.

AWOS-3  
**121.125**

INDIANAPOLIS CENTER  
**121.175 353.65**

UNICOM  
**122.7 (CTAF)**

**DME REQUIRED**



EWO VOR/DME	DUMON EWO 10	3100	EWO R-132	RAGUE EWO 19
3100	3100	2700	MUMOE EWO 23.9	
10 NM		9 NM		4.9 NM
hdg 360°				
CATEGORY	A	B	C	D
<b>C</b> CIRCLING	1540-1	619 (700-1)	1540-1 3/4 619 (700-1 3/4)	1660-2 1/4 739 (800-2 1/4)

SE-1, 16 JUN 2022 to 14 JUL 2022

SE-1, 16 JUN 2022 to 14 JUL 2022