

| | | | |
|--|------------------------|-----------------------------|---|
| WAAS CH 57931 W27A | APP CRS 274° | Rwy ldg TDZE Apt Elev | 4000 1372 1376 |
|--|------------------------|-----------------------------|---|

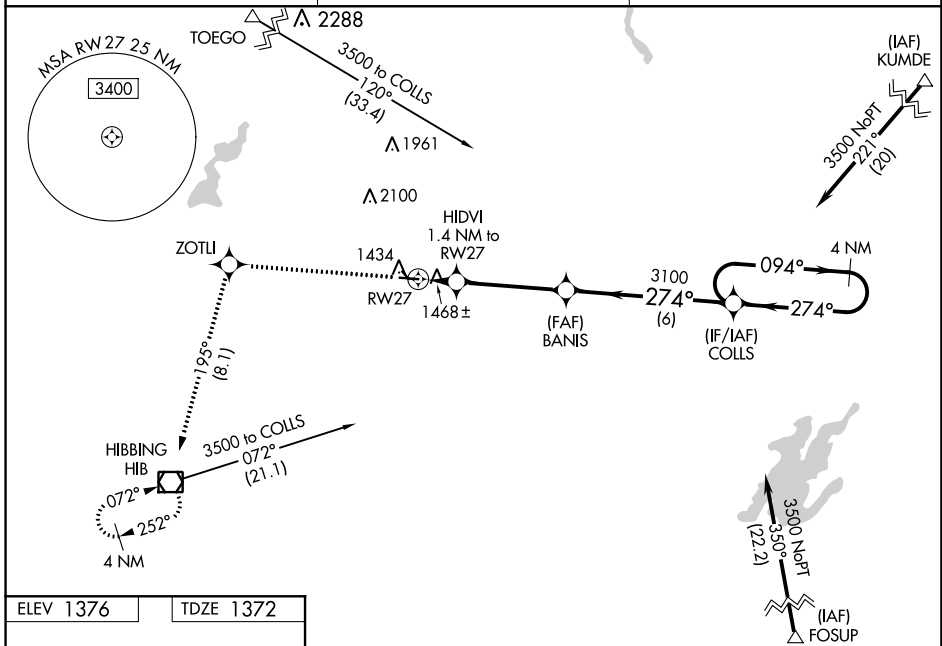
RNAV (GPS) RWY 27

EVELETH-VIRGINIA MUNI (EVM)

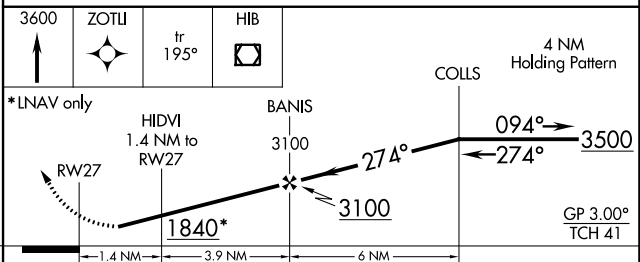
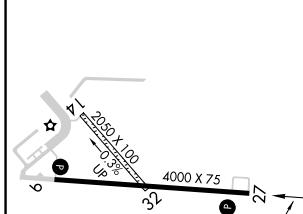
⚠ Baro-VNAV NA when using Hibbing altimeter setting. For uncompensated Baro-VNAV systems, procedure NA below -17°C (2°F) or above 54°C (130°F). DME/DME RNP-0.3 NA. Circling to Rwy 14 and 32 NA. Rwy 27 helicopter visibility reduction below 3/4 SM NA. When local altimeter setting not received, use Hibbing altimeter setting and increase LPV DA to 1670 feet, increase LNAV/VNAV DA to 1687 feet; increase all MDAs 40 feet and increase LNAV Cat C/D visibility 1/8 SM.

MISSED APPROACH:
Climb to 3600 direct ZOTLI and on track 195° to HIB VOR/DME and hold.

| | | |
|--------------------------|---------------------------------------|---------------------------------|
| AWOS-3 118.825 | DULUTH APP CON 125.45 233.7 | UNICOM 122.7 (CTAF) 1 |
|--------------------------|---------------------------------------|---------------------------------|



| | |
|-----------|-----------|
| ELEV 1376 | TDZE 1372 |
|-----------|-----------|



| CATEGORY | A | B | C | D |
|--------------|-----------------------|-----------------------|-------------------------------|-------------------------|
| LPV DA | | 1634-1 1/8 | 262 (300-1 1/8) | |
| LNAV/VNAV DA | | 1651-1 | 279 (300-1) | |
| LNAV MDA | | 1720-1 | 348 (400-1) | |
| CIRCLING | 1880-1 504 (600-1) | 1940-1 564 (600-1) | 2260-2 3/4 884 (900-2 3/4) | 2460-3 1084 (1100-3) |

MIRL Rwy 9-27 and 14-32 1
REIL Rwy 27 1

NC-1, 16 JUN 2022 to 14 JUL 2022

NC-1, 16 JUN 2022 to 14 JUL 2022