

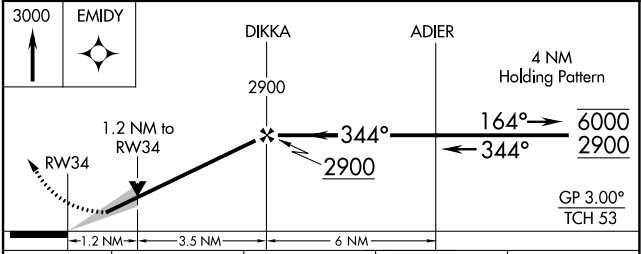
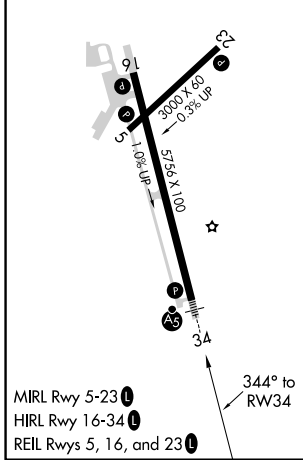
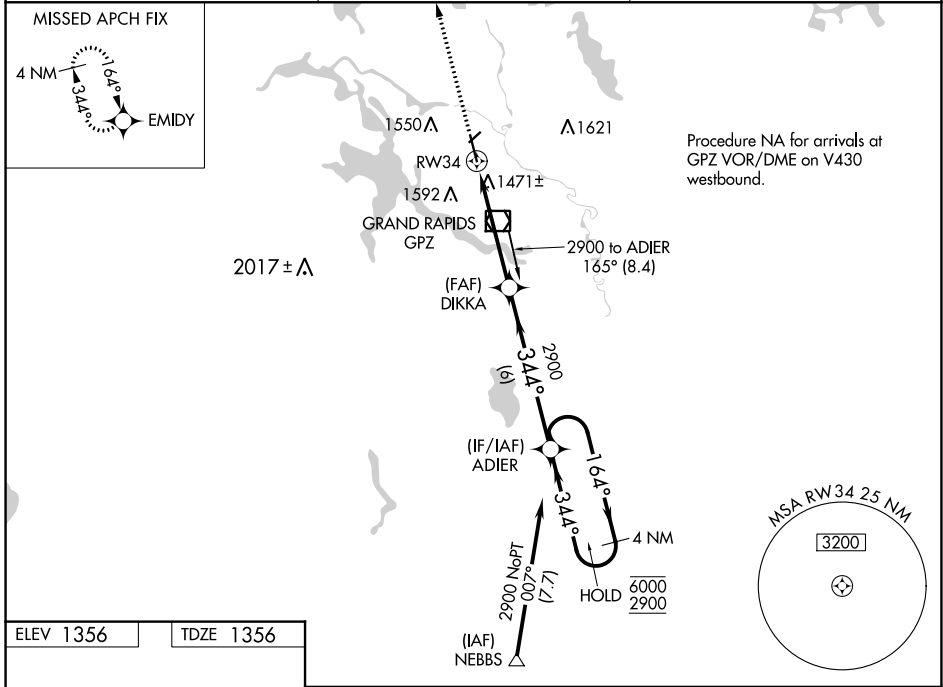
WAAS CH 86412 W34A	APP CRS 344°	Rwy Idg TDZE Apt Elev	5756 1356 1356
--	------------------------	-----------------------------	---

RNAV (GPS) RWY 34

GRAND RAPIDS/ITASCA COUNTY-GORDON NEWSTROM FLD (GPZ)

RNP APCH.	MALSR AS	MISSED APPROACH: Climb to 3000 direct EMIDY and hold.
<p>▼ Circling to Rwy 5, 23 NA at night. Circling NA for Cat D east of Rwy 16-34.</p> <p>▲ For uncompensated Baro-VNAV systems, LNAV/VNAV NA below -17°C or above 54°C.</p>		

AWOS-3PT 118.425	MINNEAPOLIS CENTER 127.9 281.45	UNICOM 122.8 (CTAF) 0
----------------------------	---	---------------------------------



CATEGORY	A	B	C	D
LPV DA	DA	1556-1/2	200 (200-1/2)	
LNAV/VNAV DA	DA	1747-5/8	391 (400-5/8)	
LNAV MDA	1800-1/2	444 (500-1/2)	1800-7/8	444 (500-7/8)
C CIRCLING	1900-1	544 (600-1)	1900-1 1/2	1960-2
			544 (600-1 1/2)	604 (700-2)

RNAV (GPS) RWY 34

NC-1, 16 JUN 2022 to 14 JUL 2022

NC-1, 16 JUN 2022 to 14 JUL 2022