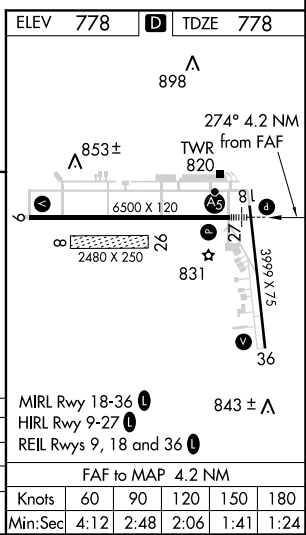
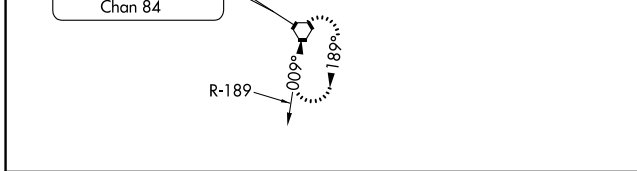
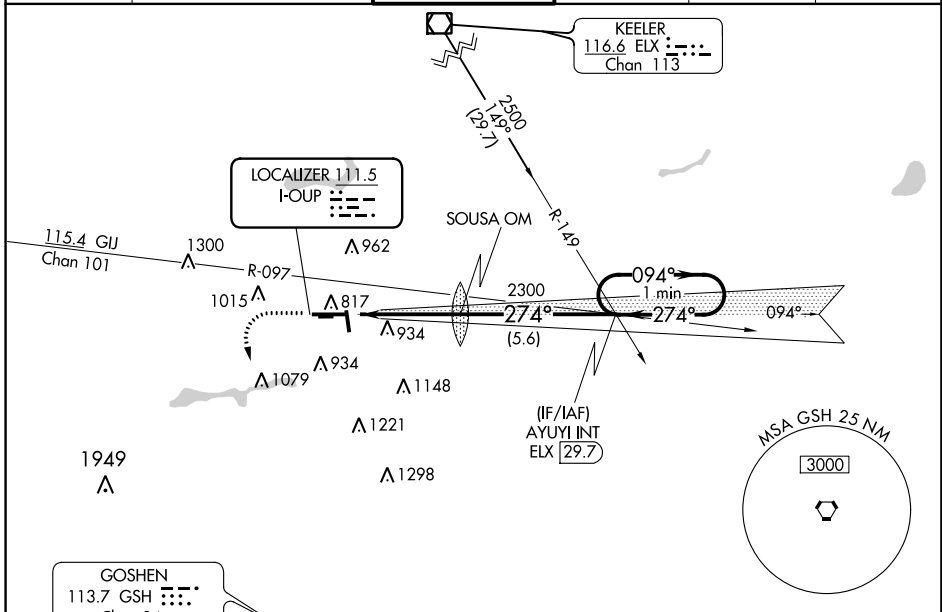


LOC I-OUT <b>111.5</b>	APP CRS <b>274°</b>	Rwy Idg <b>6500</b>
		TDZE <b>778</b>
		Apt Elev <b>778</b>

# ILS or LOC RWY 27

ELKHART MUNI (EKM)

<p><b>⚠</b> When local altimeter setting not received, use South Bend altimeter setting and increase all DA/MDA 40 feet, and increase S-LOC 27 Cat C/D visibility to RVR 5000. Circling Rwy 36 NA at night. Circling NA to Rws 8 and 26. Rwy 27 helicopter visibility reduction below RVR 4000 NA. For inop ALS, increase S-ILS 27 all Cats visibility to RVR 4500 and S-LOC 27 Cat A/B visibility to RVR 5500. For inop ALS when using South Bend altimeter setting, increase S-LOC 27 Cat A/B visibility to RVR 5500 and Cat C/D visibility to 1 1/2 SM.</p>		<p>MALSR AS</p>	<p>MISSED APPROACH: Climb to 1500 then climbing left turn to 2500 direct GSH VORTAC and hold.</p>		
AWOS-3 <b>124.475</b>	SOUTH BEND APP CON * <b>118.55 257.8</b>	ELKHART TOWER * <b>119.5 (CTAF) 0</b>	GND CON <b>121.8</b>	CLNC DEL <b>121.8</b>	UNICOM <b>122.95</b>



1500	2500	GSH
↑	↷	⬡
<p>SOUSA OM 2178</p> <p>AYUYI INT ELX 29.7</p> <p>One Minute Holding Pattern</p>		
<p>274° → 094° → 2500</p> <p>← 274°</p> <p>GS 3.00° TCH 45</p>		
<p>4.2 NM      5.6 NM</p>		

CATEGORY	A	B	C	D
S-ILS 27		1066/40	288 (300-3/4)	
S-LOC 27	1220/40	442 (500-3/4)	1220/45	442 (500-7/8)
CIRCLING	1240-1 462 (500-1)	1300-1 522 (600-1)	1380-1 3/4 602 (700-1 3/4)	1580-2 1/2 802 (900-2 1/2)

ELEV 778	TDZE 778
<p>MIRL Rwy 18-36 0</p> <p>HIRL Rwy 9-27 0</p> <p>REIL Rws 9, 18 and 36 0</p>	
<p>FAF to MAP 4.2 NM</p>	
Knots	60 90 120 150 180
Min:Sec	4:12 2:48 2:06 1:41 1:24

EC-2, 16 JUN 2022 to 14 JUL 2022

EC-2, 16 JUN 2022 to 14 JUL 2022